

SW-4, 09 SEP 2021 to 07 OCT 2021

ATIS \*  
118.6  
CLNC DEL  
124.8  
GND CON  
121.6  
SCOTTSDALE TOWER \*  
119.9  
PHOENIX DEP CON  
120.7 239.0

▼ DEPARTURE ROUTE DESCRIPTION

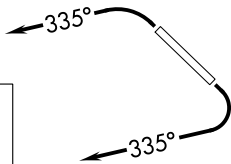
TAKEOFF RUNWAY 3: Climbing left turn heading 335° or as assigned by ATC, thence. . . .

TAKEOFF RUNWAY 21: Climbing right turn heading 335° or as assigned by ATC. Thence. . . .

. . . . expect RADAR vectors to GBN VORTAC, then on track 249° to JUDTH, then on (transition). Maintain ATC assigned altitude, expect filed altitude 3 minutes after departure.

MOHAK TRANSITION (JUDTH7.MOHAK)

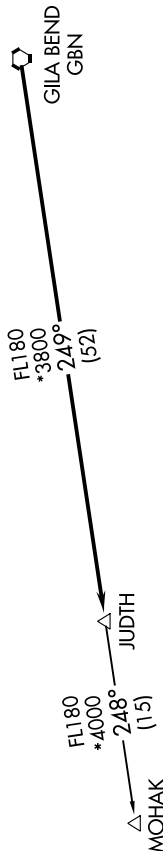
**TOP ALTITUDE:  
ASSIGNED BY ATC**



- NOTE: RNAV 1.
- NOTE: Turboprops and turboprops only.
- NOTE: RADAR required.
- NOTE: GPS required.
- NOTE: Aircraft departing KGEU and KGYR ATC assigned only.
- NOTE: Rwy 21: Do not exceed 210K until established on assigned heading.

**TAKEOFF MINIMUMS**

- Rwy 3: Standard with minimum climb of 445' per NM to 4600.
- Rwy 21: Standard with minimum climb of 300' per NM to 4600.



NOTE: Chart not to scale.

SW-4, 09 SEP 2021 to 07 OCT 2021