

APP CRS 003°	Rwy Idg TDZE Apt Elev	N/A N/A 1510
------------------------	-----------------------------	---

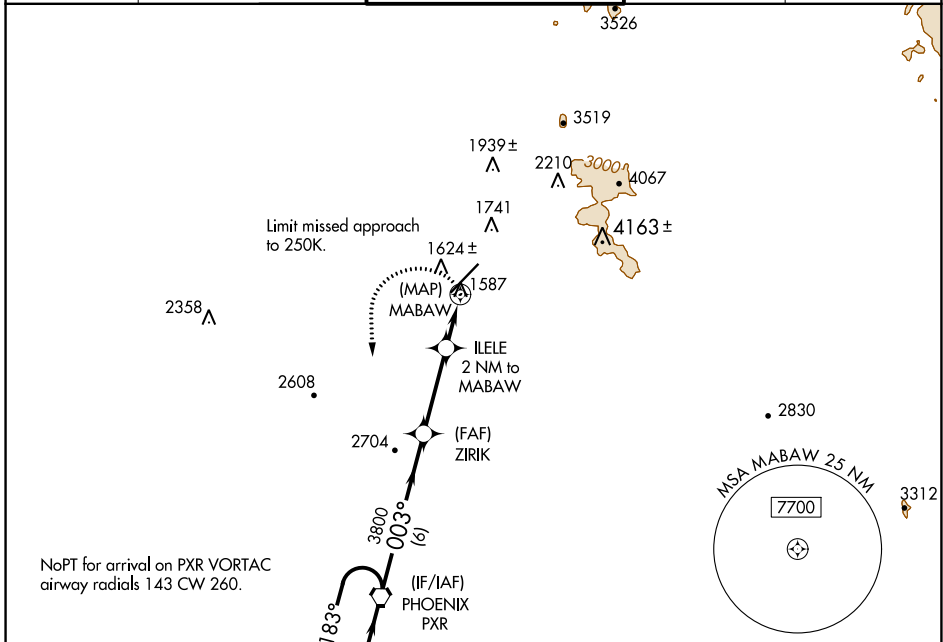
RNAV (GPS)-E

SCOTTSDALE (SDL)

⚠ When VGSI inoperative, circling Rwy 21 NA at night. When local altimeter setting not received, use Phoenix Sky Harbor Intl altimeter setting and increase all MDA 100 feet and increase Cat B visibility ¼ mile; increase Cat C and D visibility ½ mile. DME/DME RNP-0.3 NA.

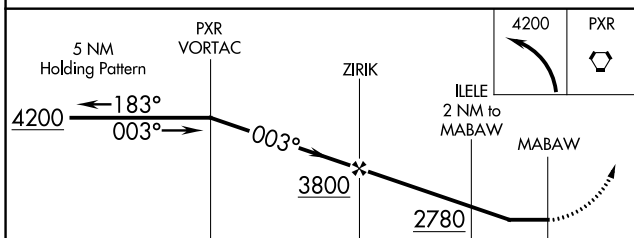
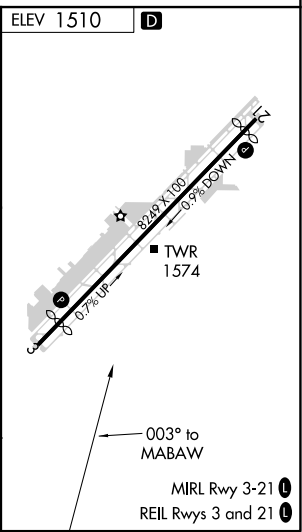
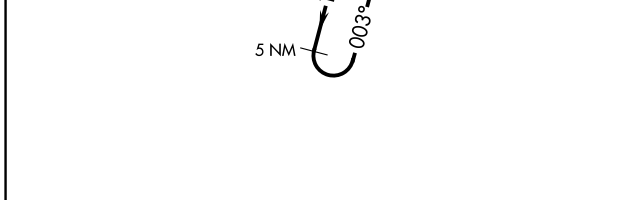
MISSED APPROACH: Climbing left turn to 4200 direct PXR VORTAC and hold.

ATIS★ 118.6	PHOENIX APP CON 120.7 239.0	SCOTTSDALE TOWER★ 119.9 (CTAF) 0	GND CON 121.6	CLNC DEL 124.8
-----------------------	---------------------------------------	--	-------------------------	--------------------------



SW-4, 09 SEP 2021 to 07 OCT 2021

SW-4, 09 SEP 2021 to 07 OCT 2021



CATEGORY	A	B	C	D
CIRCLING	2140-1	630 (700-1)	2140-2	630 (700-2)