

# RNAV (RNP) RWY 21

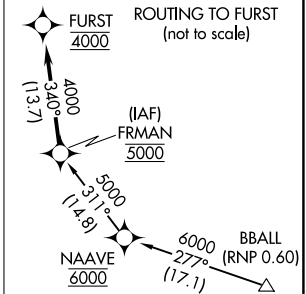
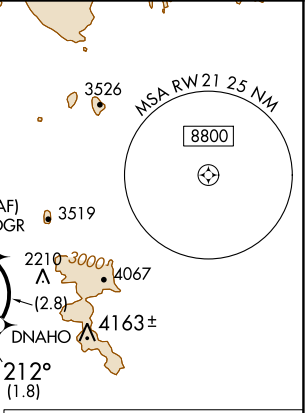
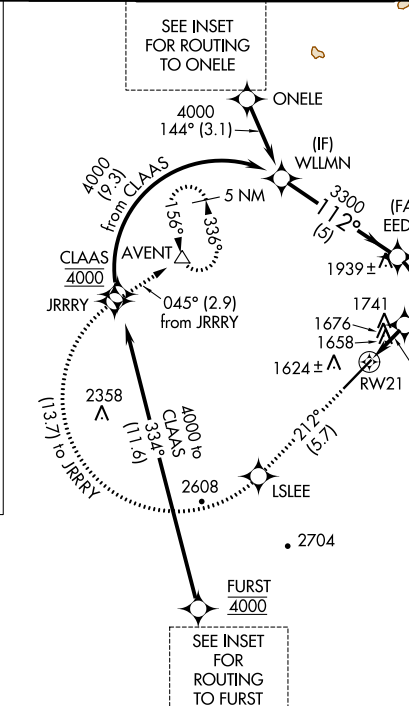
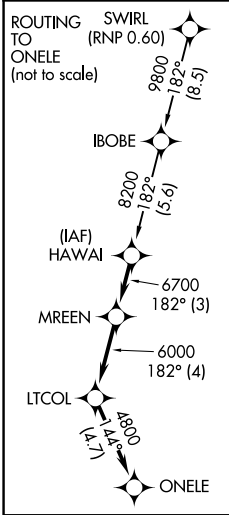
SCOTTSDALE (SDL)

APP CRS	Rwy Idg	<b>7669</b>
<b>212°</b>	TDZE	<b>1510</b>
	Apt Elev	<b>1510</b>

**RF and GPS required. Visibility reduction by helicopters NA.**  
 For uncompensated Baro-VNAV systems, procedure NA  
 below 1°C (31°F) or above 44°C (112°F).  
 When local altimeter setting not received procedure NA.

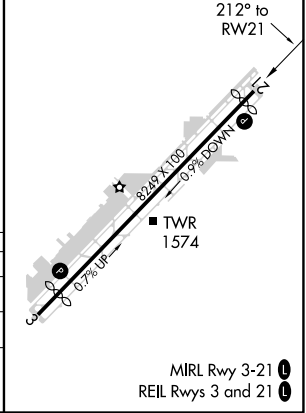
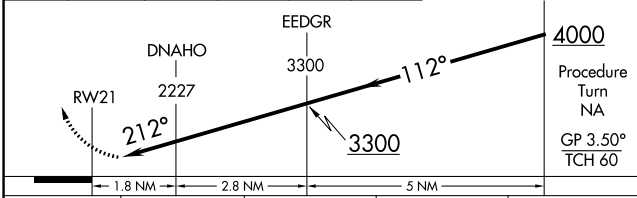
**MISSED APPROACH:** Climb to 5000 via track 212° to LSLEE, and via right turn to JRRRY, and via track 045° to AVENT and hold.

ATIS ★ <b>118.6</b>	PHOENIX APP CON <b>120.7 239.0</b>	SCOTTSDALE TOWER ★ <b>119.9 (CTAF) 0</b>	GND CON <b>121.6</b>	CLNC DEL <b>124.8</b>
------------------------	---------------------------------------	---	-------------------------	--------------------------



5000 ↑ tr 212°	LSLEE	JRRRY	tr 045°	AVENT	VGSI and RNAV glidepath not coincident (VGSI Angle 4.00/TCH 40).
----------------------	-------	-------	---------	-------	--

ELEV 1510	<b>D</b>	TDZE 1510
-----------	----------	-----------



CATEGORY	A	B	C	D
RNP 0.10 DA	1948-1¼	438 (500-1¼)		NA
RNP 0.16 DA	1987-1½	477 (500-1½)		NA

**AUTHORIZATION REQUIRED**

MIRL Rwy 3-21 **0**  
 REIL Rws 3 and 21 **0**

SW-4, 09 SEP 2021 to 07 OCT 2021

SW-4, 09 SEP 2021 to 07 OCT 2021