

APP CRS	Rwy Idg	7110
032°	TDZE	1470
	Apt Elev	1510

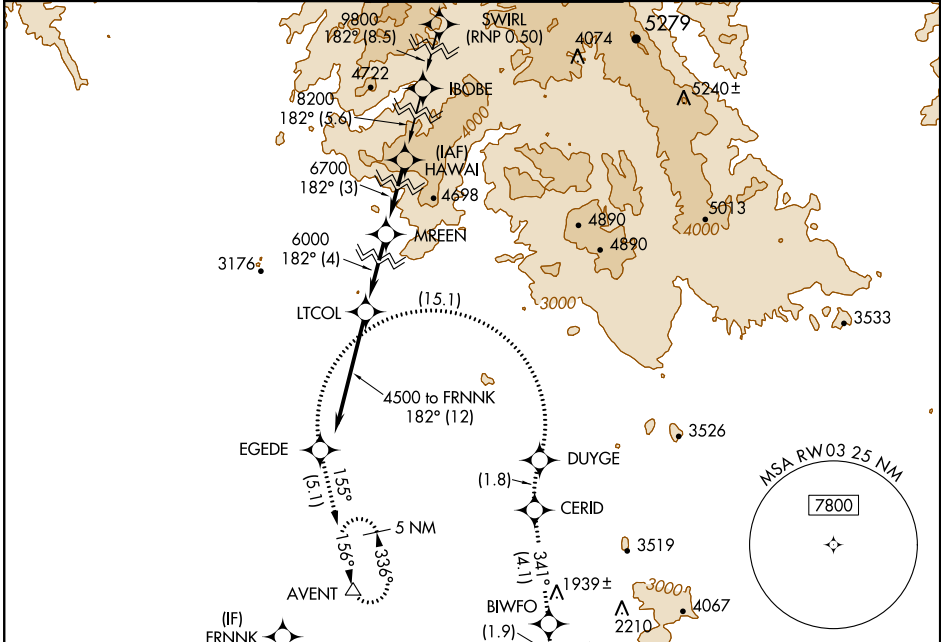
RNAV (RNP) Y RWY 3

SCOTTSDALE (SDL)

▼ RF and GPS required. Visibility reduction by helicopters NA. For uncompensated Baro-VNAV systems, procedure NA below 1°C (31°F) or above 54°C (130°F). When local altimeter setting not received procedure NA. Missed approach requires RNP less than 1.0.

MISSED APPROACH: Climb to 5000 via left turn to AFXUR, and via left turn to BIWFO, and via track 341° to CERID, and via right turn to DUYGE, and via left turn to EGEDE, and via track 155° to AVENT and hold.

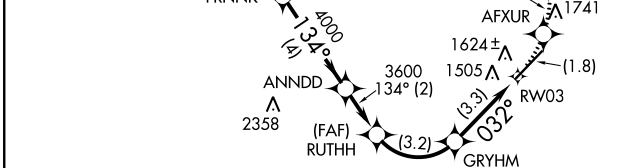
ATIS ★	PHOENIX APP CON	SCOTTSDALE TOWER ★	GND CON	CLNC DEL
118.6	120.7 239.0	119.9 (CTAF) 0	121.6	124.8



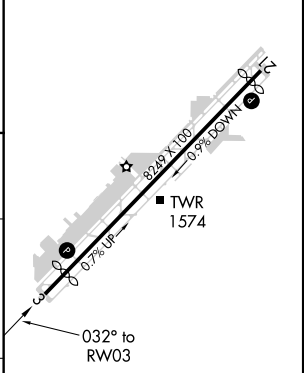
SW-4, 09 SEP 2021 to 07 OCT 2021

SW-4, 09 SEP 2021 to 07 OCT 2021

ELEV 1510	D TDZE 1470
-----------	--------------------



VGSi and RNAV glidepath not coincident (VGSi Angle 4.00/TCH 59).			
FRNNK	ANNDD	RUTHH	GRYHM
4500	4000	3600	2542
Procedure Turn NA			
GP 3.00°			
TCH 60			
4 NM	2 NM	3.2 NM	3.3 NM



CATEGORY	A	B	C	D
RNP 0.30 DA	1829-1¼	359 (400-1¼)		NA
AUTHORIZATION REQUIRED				

