

WAAS CH 49222 W08A	APP CRS 084°	Rwy Idg TDZE Apt Elev	6002 698 698
--	------------------------	-----------------------------	---

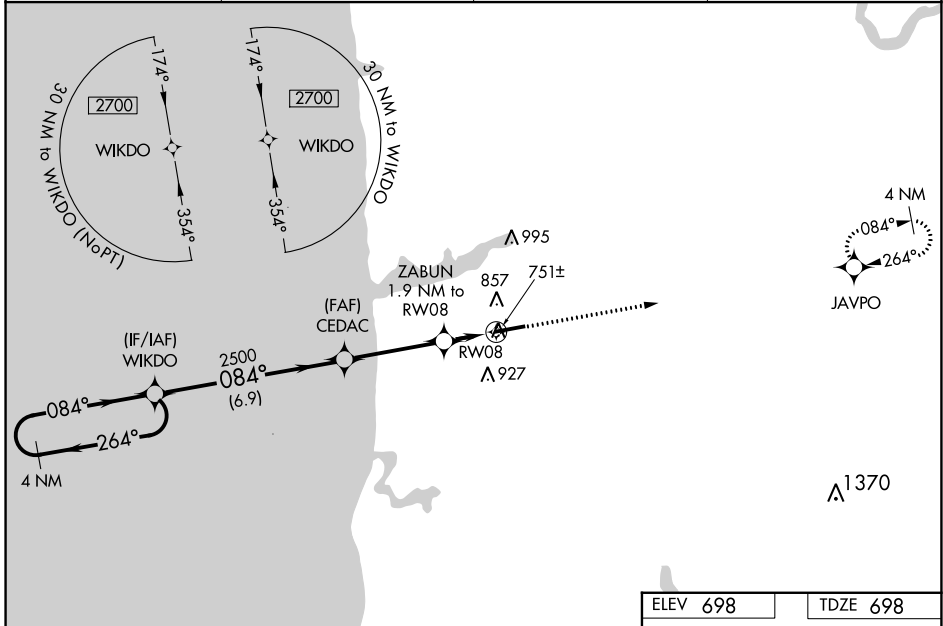
RNAV (GPS) RWY 8

WEST MICHIGAN RGNL (BIV)

⚠ Baro-VNAV NA when using Muskegon County altimeter setting. For uncompensated Baro-VNAV systems, LNAV/VNAV NA below -16°C (4°F) or above 54°C (130°F). When local altimeter setting not received, use Muskegon County altimeter setting and increase LPV DA to 1018 feet, increase LPV all Cats visibility ¼ SM; increase LNAV/VNAV DA to 1050 feet, increase LNAV/VNAV all Cats visibility ⅓ SM; increase all MDA 80 feet, increase LNAV Cat C/D visibility ⅓ SM and Circling Cats C/D visibility ¼ SM. DME/DME RNP-0.3 NA. VDP NA when using Muskegon County altimeter setting.

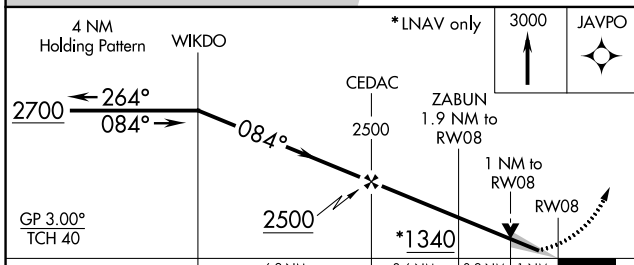
MISSED APPROACH:
Climb to 3000 direct JAVPO and hold.

ASOS 119.025	GREAT LAKES APP CON* 133.825 290.35	CLNC DEL 123.95	UNICOM 123.05 (CTAF) ①
------------------------	---	---------------------------	----------------------------------



EC-1, 09 SEP 2021 to 07 OCT 2021

EC-1, 09 SEP 2021 to 07 OCT 2021



ELEV 698	TDZE 698
----------	----------

CATEGORY	A	B	C	D
LPV DA		948- 7/8	250 (300- 7/8)	
LNAV/VNAV DA		980- 7/8	282 (300- 7/8)	
LNAV MDA		1060-1	362 (400-1)	
CIRCLING	1200-1 502 (600-1)	1240-1 542 (600-1)	1240-1½ 542 (600-1½)	1320-2 622 (700-2)

