

VORTAC FLO 115.2 Chan 99	APP CRS 104°	Rwy Idg TDZE Apt Elev	N/A N/A 92
--	------------------------	-----------------------------	---------------------------------------

VOR/DME-A
MARION COUNTY (MAO)

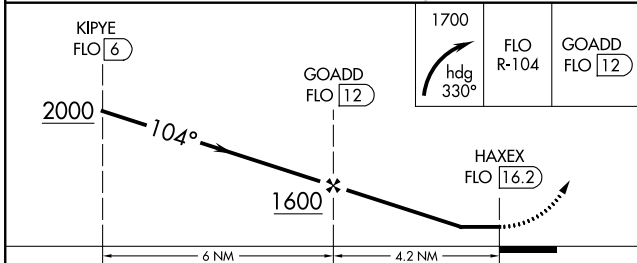
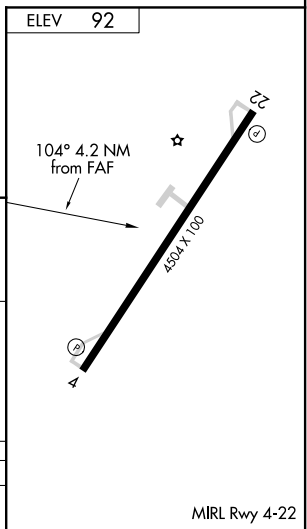
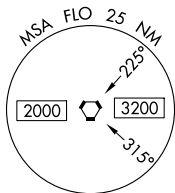
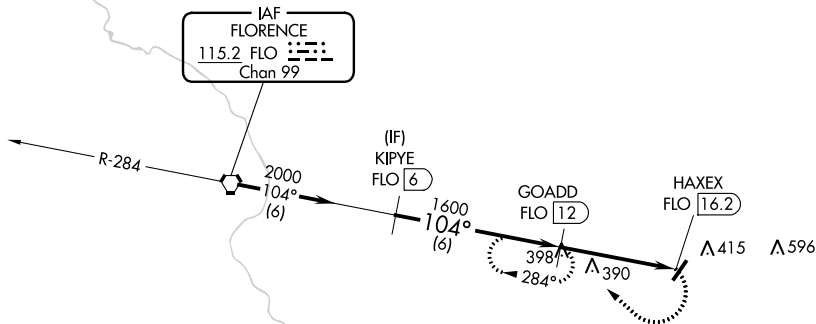
⚠ When local altimeter setting not received, use Florence altimeter setting and increase all MDA 60 feet. Increase Cat C/D visibility ¼ mile.

MISSED APPROACH: Climbing right turn to 1700 on heading 330° and on FLO VORTAC R-104 to GOADD/FLO 12 DME and hold.

AWOS-3 119.875	FLORENCE APP CON ★ 135.25 316.15	UNICOM 122.8 (CTAF)
--------------------------	--	-------------------------------

Procedure NA for arrivals on FLO VORTAC airway radials 088 CW 121.

△²¹¹⁴



CATEGORY	A	B	C	D
C CIRCLING	720-1	628 (700-1)	720-1¾ 628 (700-1¾)	960-2¾ 868 (900-2¾)

MIRL Rwy 4-22

SE-2, 09 SEP 2021 to 07 OCT 2021

SE-2, 09 SEP 2021 to 07 OCT 2021