

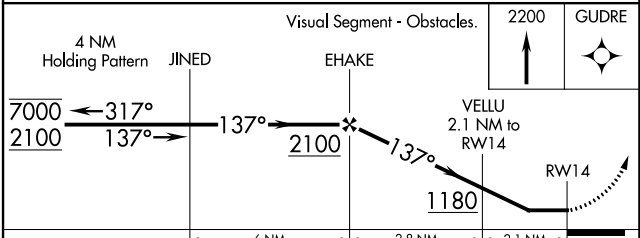
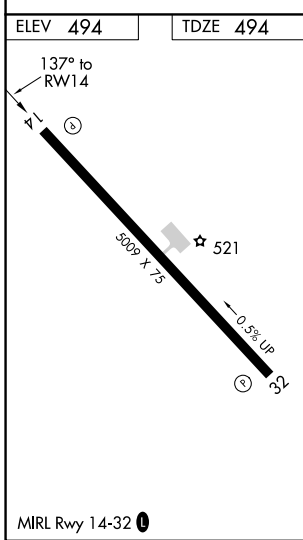
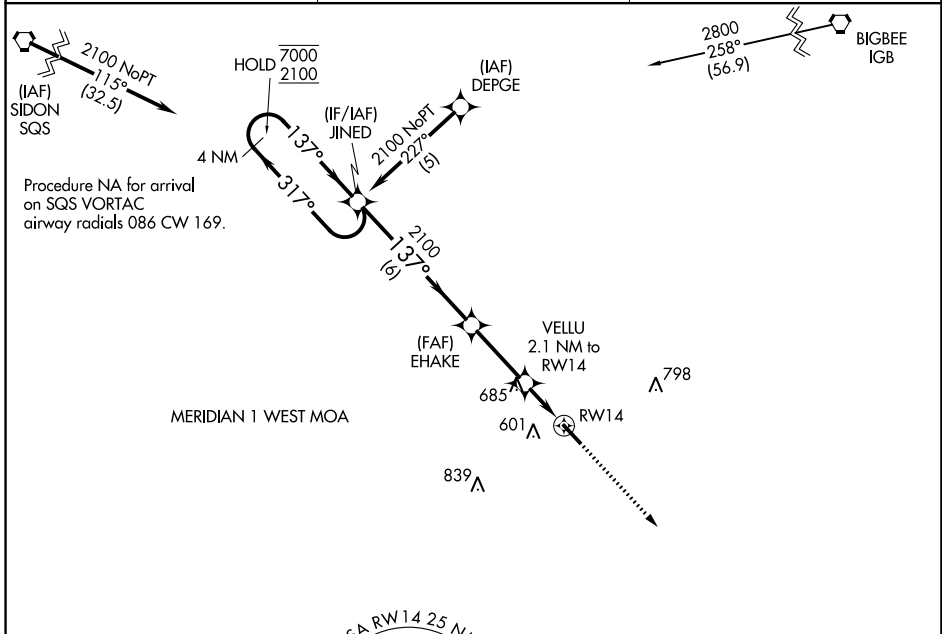
APP CRS	Rwy Idg	5009
137°	TDZE	494
	Apt Elev	494

RNAV (GPS) RWY 14

KOSCIUSKO-ATTALA COUNTY (OSX)

RNP APCH.	Rwy 14 helicopter visibility reduction below 1 SM NA. Procedure NA at night. Use Philadelphia altimeter setting; when not received, use Greenwood altimeter setting and increase all MDAs 80 feet and LNAV Cat C and Circling Cat C visibility ¼ SM.	MISSED APPROACH: Climb to 2200 direct GUDRE and hold.
-----------	---	---

MPE AWOS-3P 118.725	MEMPHIS CENTER 132.75 350.25	CTAF 122.9
-------------------------------	--	----------------------



CATEGORY	A	B	C	D
LNAV MDA	1020-1	526 (600-1)	1020-1½ 526 (600-1½)	NA
CIRCLING	1020-1	526 (600-1)	1020-1½ 526 (600-1½)	NA

SC-4, 09 SEP 2021 to 07 OCT 2021

SC-4, 09 SEP 2021 to 07 OCT 2021