

APP CRS	Rwy Idg	5009
317°	TDZE	480
	Apt Elev	494

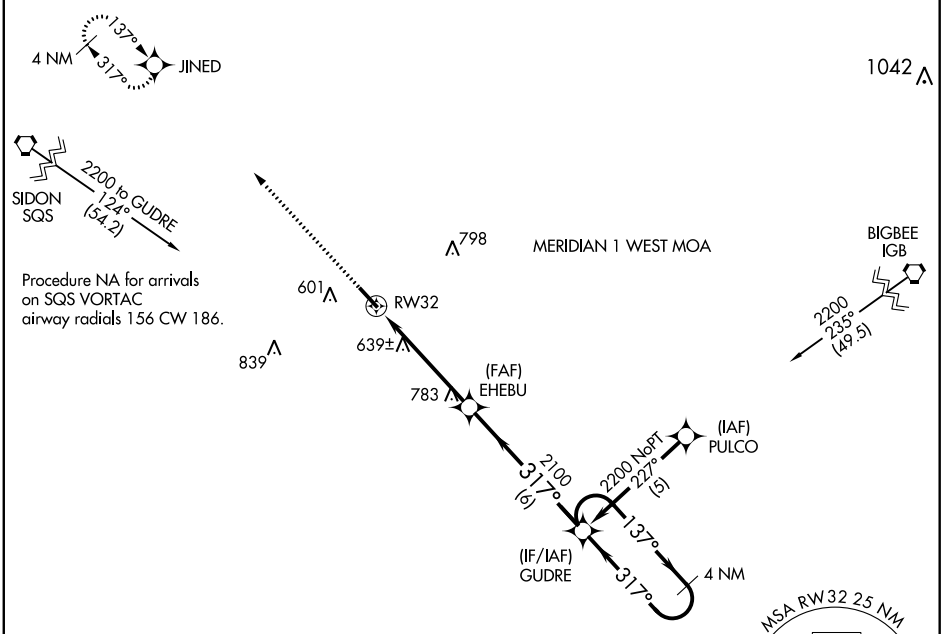
RNAV (GPS) RWY 32

KOSCIUSKO-ATTALA COUNTY (OSX)

NA DME/DME RNP-0.3 NA. Helicopter visibility reduction below 1 SM NA. Procedure NA at night. Use Philadelphia altimeter setting; when not received, use Greenwood altimeter setting and increase all MDA 100 feet and LNAV Cat C visibility $\frac{3}{8}$ mile and Circling Cat C visibility $\frac{1}{4}$ mile.

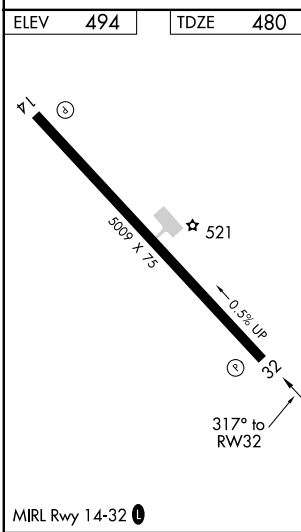
MISSED APPROACH: Climb to 2100 direct JINED and hold.

MPE AWOS-3P 118.725	MEMPHIS CENTER 132.75 350.25	CTAF 122.9
-------------------------------	--	----------------------



SC-4, 09 SEP 2021 to 07 OCT 2021

SC-4, 09 SEP 2021 to 07 OCT 2021



2100	JINED	VGSI and descent angles not coincident (VGSI Angle 3.50/TCH 49).	GUDRE	4 NM Holding Pattern
				137° → 2200
				← 317°
				2100
				317°
				3.04°
				TCH 45
				4.9 NM
				6 NM
CATEGORY	A	B	C	D
LNAV MDA	960-1	480 (500-1)	960-1 $\frac{3}{8}$ 480 (500-1 $\frac{3}{8}$)	NA
CIRCLING	1020-1	526 (600-1)	1020-1 $\frac{1}{2}$ 526 (600-1 $\frac{1}{2}$)	NA