

WAAS CH <b>69304</b> <b>W31A</b>	APP CRS <b>308°</b>	Rwy Idg TDZE Apt Elev	<b>4300</b> <b>897</b> <b>900</b>
--	------------------------	-----------------------------	---

# RNAV (GPS) RWY 31

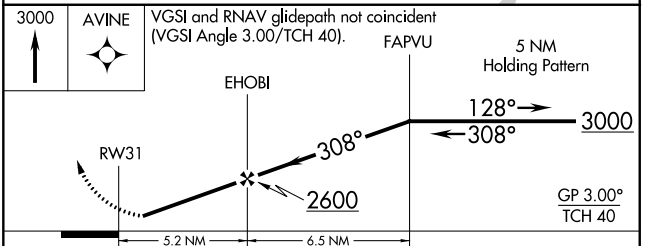
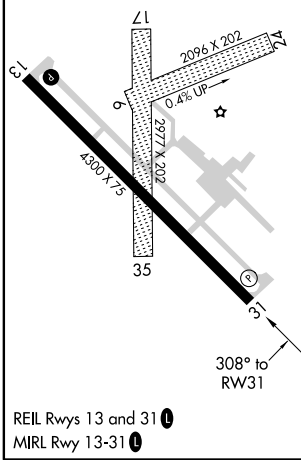
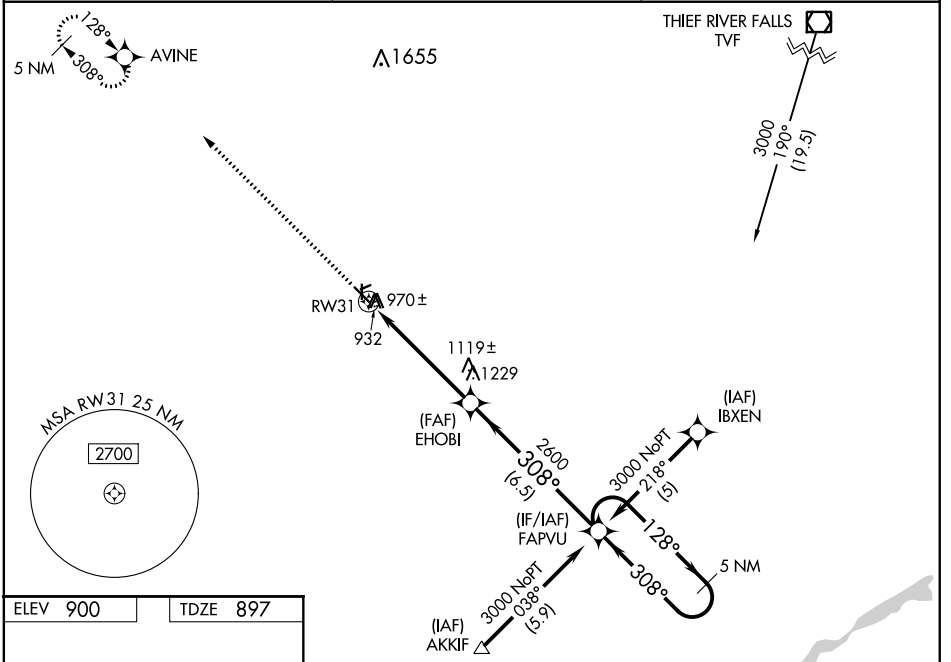
CROOKSTON MUNI KIRKWOOD FLD (CKN)

RNP APCH.

**⚠** Baro-VNAV NA when using Grand Forks altimeter setting. For uncompensated Baro-VNAV systems, LNAV/VNAV NA below -16°C (4°F) or above 54°C (130°F). If local altimeter setting not received, use Grand Forks altimeter setting and increase all DAs 62 feet and all MDAs 80 feet. Visibility reduction by helicopters NA. Circling Rwys 6, 24, 17, 35 NA at night.

**ⓘ** MISSED APPROACH: Climb to 3000 direct AVINE and hold.

AWOS-3 <b>126.425</b>	GRAND FORKS APP CON* <b>118.1 318.1</b>	UNICOM <b>122.7 (CTAF) ⓘ</b>
--------------------------	--	---------------------------------



CATEGORY	A	B	C	D
LPV DA	1157-1 260 (300-1)			NA
LNAV/VNAV DA	1320-1½ 423 (500-1½)			NA
LNAV MDA	1380-1	483 (500-1)	1380-1¼ 483 (500-1¼)	NA
CIRCLING	1380-1	480 (500-1)	1380-1½ 480 (500-1½)	NA

NC-1, 09 SEP 2021 to 07 OCT 2021

NC-1, 09 SEP 2021 to 07 OCT 2021