

VORTAC SQS <b>114.7</b> Chan <b>94</b>	APP CRS <b>271°</b>	Rwy ldg TDZE <b>N/A</b> Apt Elev <b>126</b>
--	------------------------	---

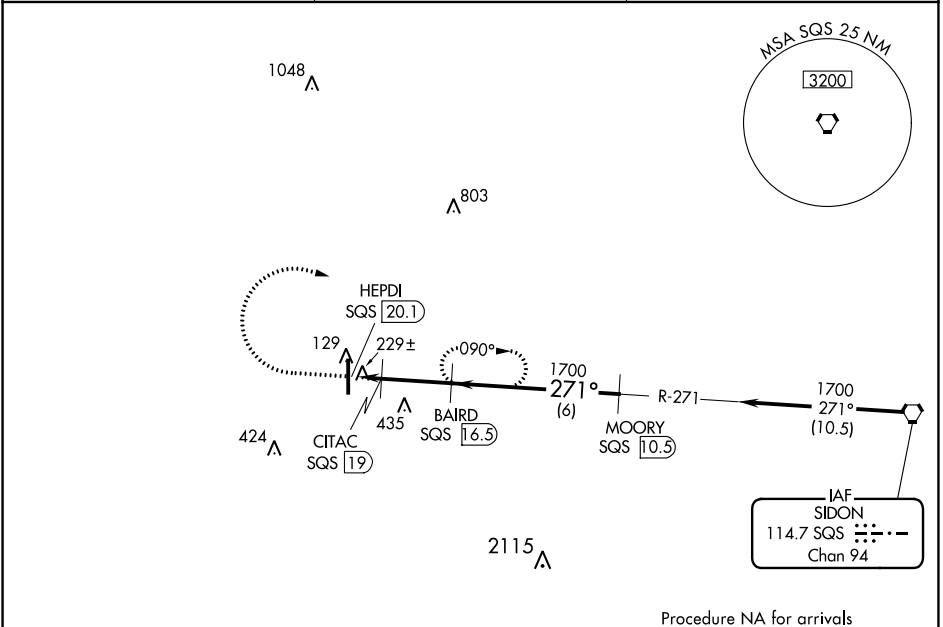
# VOR/DME-A

INDIANOLA MUNI (IDL)

Use Greenville altimeter setting, when not received, use Greenwood altimeter setting and increase all MDA 40 feet and Circling Cat C/D visibility ¼ SM. Circling to Rwy 18 NA at night. Helicopter visibility reduction below 1 SM NA.

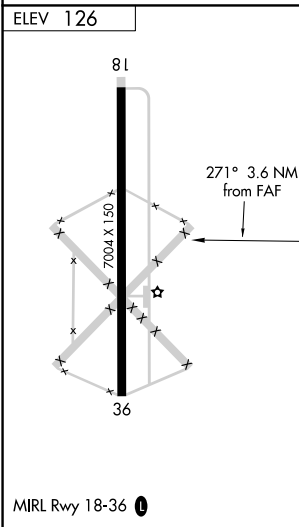
MISSED APPROACH: Climb to 900, then climbing right turn to 1700 on SQS VORTAC R-271 to BAIRD/16.50 DME and hold.

GLH ASOS <b>125.525</b>	MEMPHIS CENTER <b>135.875 269.35</b>	UNICOM <b>122.8 (CTAF) 0</b>
----------------------------	---	---------------------------------



SC-4, 09 SEP 2021 to 07 OCT 2021

SC-4, 09 SEP 2021 to 07 OCT 2021



	900	1700	BAIRD SQS 16.5		
	↑	↘		BAIRD SQS 16.5	MOORY SQS 10.5
				↙	↔
				HEPDI SQS 20.1	CITAC SQS 19
				↘	↔
				920	1700
				↙	↔
				1700	1700
				↙	↔
				1.1 NM	2.5 NM
				6 NM	
				Procedure Turn NA	
CATEGORY	A	B	C	D	
CIRCLING	580-1 454 (500-1)	600-1 474 (500-1)	840-2 714 (800-2)	840-2¼ 714 (800-2¼)	