

| | | |
|---------------------------------|------------------------|---|
| WAAS CH 53604 W36A | APP CRS 360° | Rwy Idg THRE 321 Apt Elev 333 |
|---------------------------------|------------------------|---|

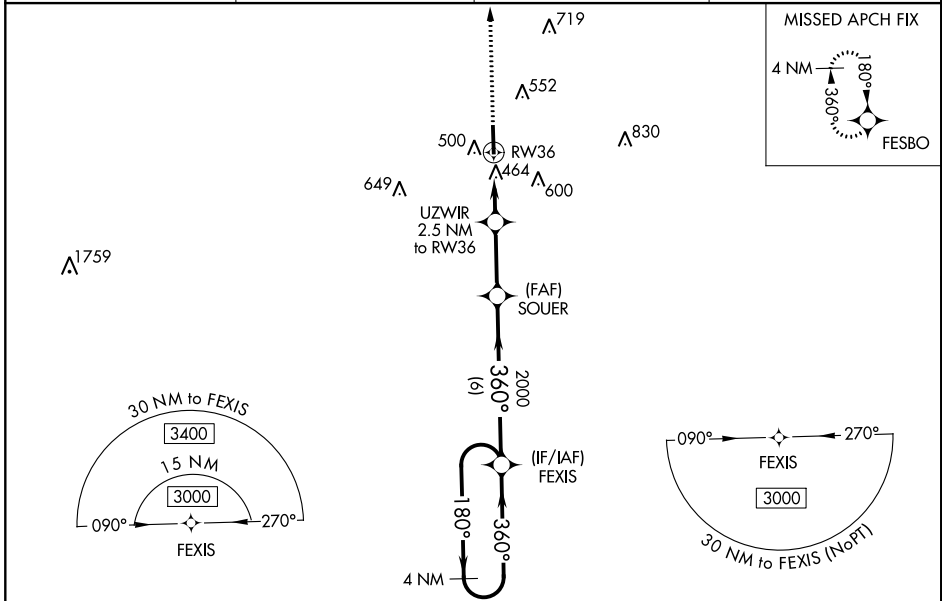
RNAV (GPS) RWY 36

GEORGE M BRYAN (STF)

▼ **NA**
 For uncompensated Baro-VNAV systems, LNAV/VNAV NA below -15°C (5°F) or above 54°C (130°F). DME/DME RNP-0.3 NA. Helicopter visibility reduction below 3/4 SM NA. When local altimeter setting not received, use Golden Triangle Rgnl altimeter setting and increase all DA/MDA 40 feet; increase LNAV/VNAV all Cats and LNAV Cats C/D visibility 1/8 mile. Increase Circling Cat C visibility 1/4 mile. Baro-VNAV and VDP NA when using Golden Triangle Rgnl altimeter setting. When VGSI inop, Circling Rwy 18 NA at night.

MISSED APPROACH: Climb to 3400 direct FESBO and hold, continue climb-in-hold to 3400.

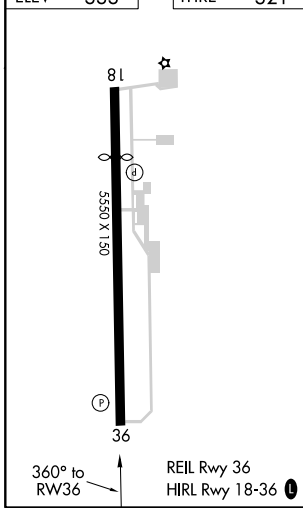
| | | | |
|----------------------------|---|---------------------------|--|
| AWOS-3PT 118.975 | COLUMBUS APP CON* 135.6 323.275 | CLNC DEL 126.25 | UNICOM 122.7 (CTAF) 0 |
|----------------------------|---|---------------------------|--|



SC-4, 09 SEP 2021 to 07 OCT 2021

SC-4, 09 SEP 2021 to 07 OCT 2021

| | |
|----------|----------|
| ELEV 333 | THRE 321 |
|----------|----------|



| | | | | | |
|-----------------|-------------------|---------------------|---------------------------|---------------------------|----------------------------|
| 3400 | FESBO | UZWR 2.5 NM to RW36 | SOUER 2000 | FEXIS | 4 NM Holding Pattern |
| *LNAV only. | | *1.1 NM to RW36 | *1.140 | 2000 | 180° → 3000 |
| | | 1.1 NM | 1.4 NM | 2.7 NM | ← 360° |
| CATEGORY | A | B | C | D | |
| LPV DA | 521-3/4 | | 200 (200-3/4) | | |
| LNAV/VNAV DA | 645-1 1/8 | | 324 (400-1 1/8) | | |
| LNAV MDA | 720-1 399 (400-1) | | 720-1 1/8 399 (400-1 1/8) | | |
| CIRCLING | 920-1 | 587 (600-1) | | 920-1 1/2 587 (600-1 1/2) | 1020-2 1/4 687 (700-2 1/4) |