

WAAS CH <b>72930</b> W17A	APP CRS <b>170°</b>	Rwy Idg TDZE Apt Elev	<b>10000</b> <b>5823</b> <b>5885</b>
---------------------------------	------------------------	-----------------------------	--

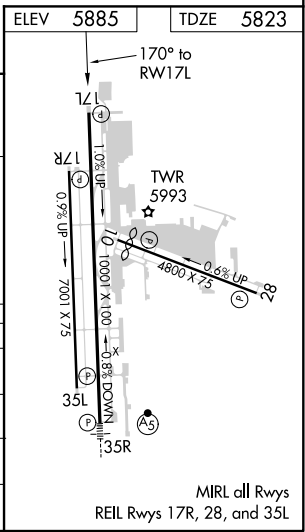
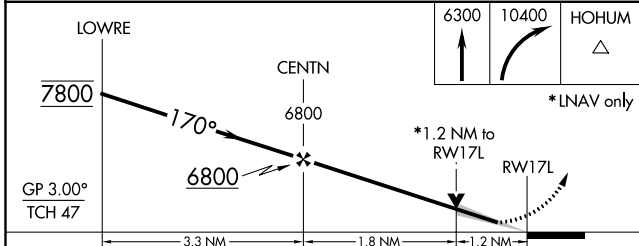
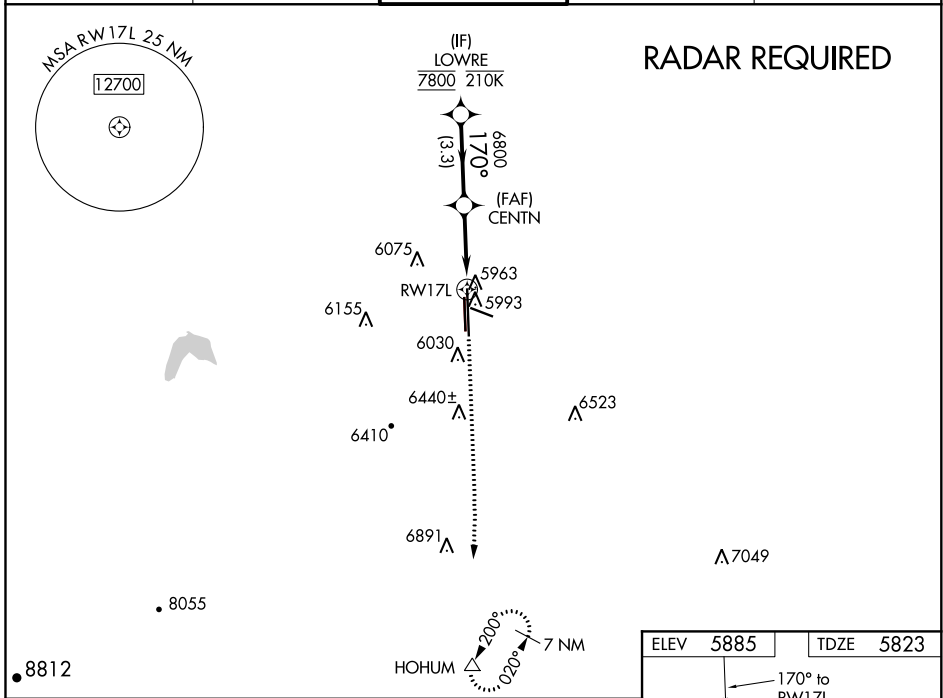
# RNAV (GPS) RWY 17L

CENTENNIAL (APA)

**⚠** For uncompensated Baro-VNAV systems, LNAV/VNAV NA below -20°C (-4°F) or above 47°C (118°F). DME/DME RNP-0.3 NA.  
Night Landing: Rwy 35L NA.

**MISSED APPROACH:** Climb to 6300 then climbing right turn to 10400 direct HOHUM and hold, continue climb-in-hold to 10400.

ATIS <b>120.3</b>	DENVER APP CON <b>132.75 269.3</b>	<b>CENTENNIAL TOWER</b> <b>118.9</b>	GND CON <b>121.8</b>	CLNC DEL <b>128.6</b>
----------------------	---------------------------------------	---	-------------------------	--------------------------



CATEGORY	A	B	C	D
LPV DA	6023-3/4		200 (200-3/4)	
LNAV/VNAV DA	6154-1 1/4		331 (300-1 1/4)	
LNAV MDA	6220-1	397 (400-1)	6220-1 1/8	397 (400-1 1/8)
<b>CIRCLING</b>	6400-1 515 (600-1)	6540-1 655 (700-1)	6740-2 1/2 855 (900-2 1/2)	6900-3 1015 (1100-3)

SW-1, 09 SEP 2021 to 07 OCT 2021

SW-1, 09 SEP 2021 to 07 OCT 2021