

WAAS CH 70426 W33A	APP CRS 329°	Rwy Idg TDZE Apt Elev	5000 336 336
--	------------------------	-----------------------------	---

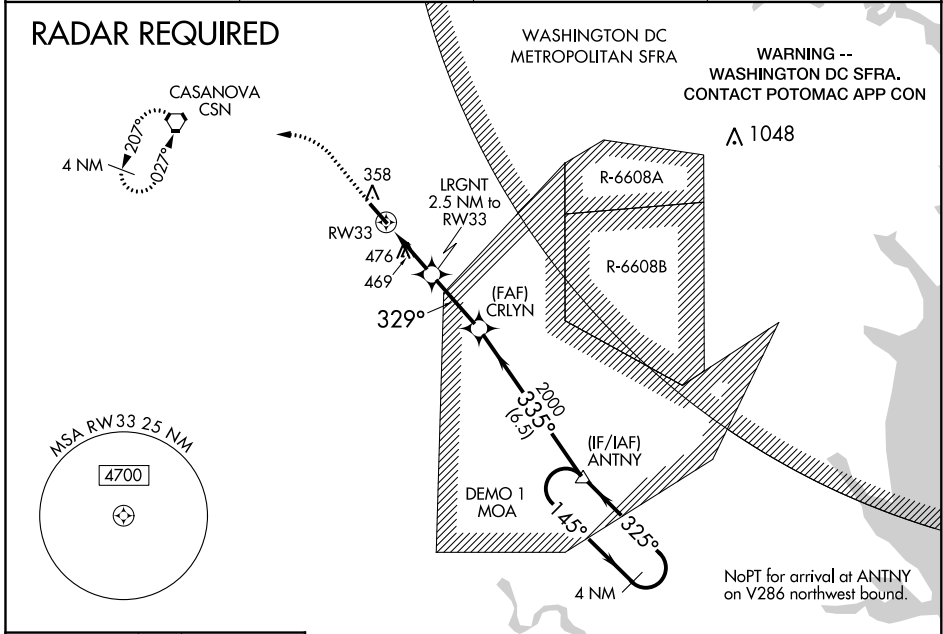
RNAV (GPS) RWY 33

WARRENTON-FAUQUIER (HWY)

▼ DME/DME RNP-0.3 NA. When local altimeter setting not received, use Culpeper altimeter setting; increase all MDA 40 feet, increase LP Cat C/D visibility 1/8 SM, increase LNAV Cat C/D and Circling Cat D visibility 1/4 SM.

▲ MISSED APPROACH: Climb to 800 then climbing left turn to 3000 direct CSN VORTAC and hold, continue climb in hold to 3000.

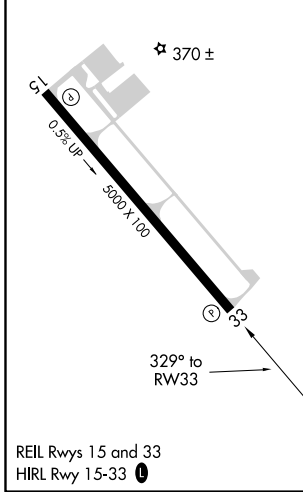
AWOS-3 120.35	CJR AWOS-3 119.325	POTOMAC APP CON 128.525 306.925	UNICOM 122.7 (CTAF) 0
-------------------------	------------------------------	---	---------------------------------



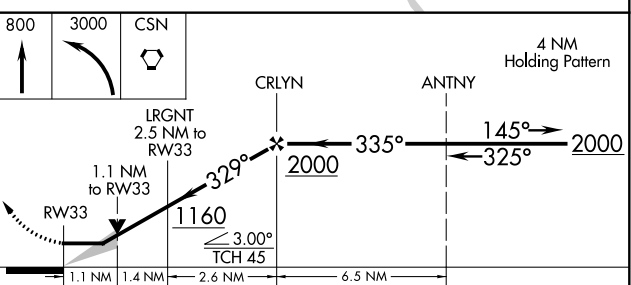
NE-3, 09 SEP 2021 to 07 OCT 2021

NE-3, 09 SEP 2021 to 07 OCT 2021

ELEV 336	TDZE 336
----------	----------



Procedure NA when DEMO 1 MOA active.



CATEGORY	A	B	C	D
LP MDA	720-1	384 (400-1)	720-1½	384 (400-1½)
LNAV MDA	740-1	404 (500-1)	740-1½	404 (500-1½)
CIRCLING	760-1 424 (500-1)	800-1 464 (500-1)	880-1½ 544 (600-1½)	980-2 644 (700-2)