

APP CRS	Rwy Idg	<b>5004</b>
<b>216°</b>	TDZE	<b>717</b>
	Apt Elev	<b>717</b>

# RNAV (GPS) RWY 22

SHARP COUNTY RGNL (CVK)

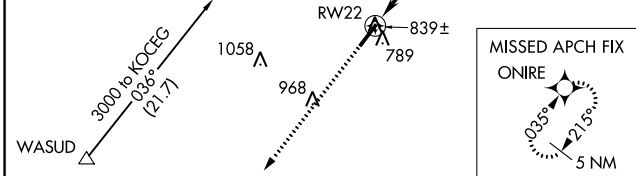
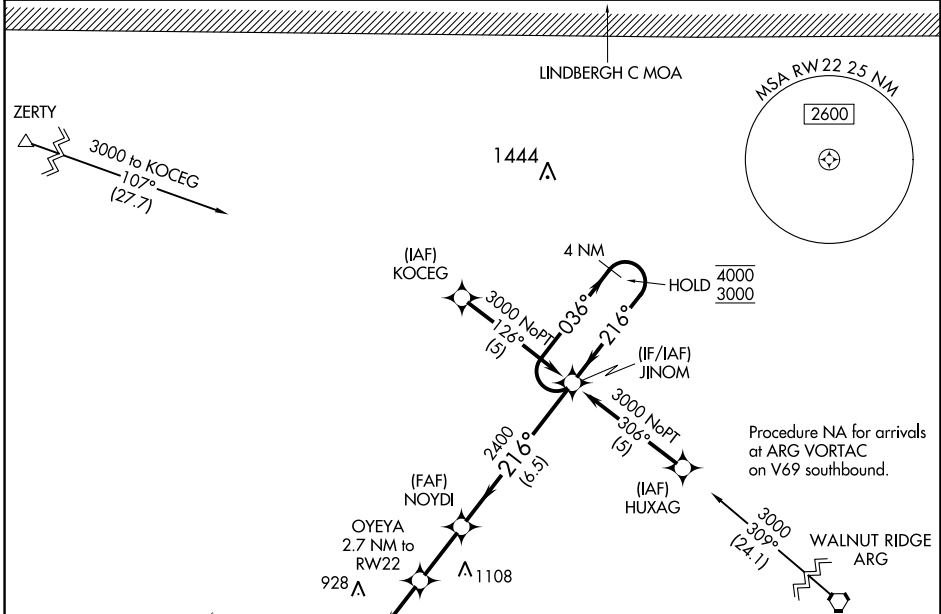
RNP APCH.

**▽** Rwy 22 helicopter visibility reduction below 3/4 SM NA. Circling Rwy 4 NA at night. Use Walnut Ridge Rgnl altimeter setting, when not received, use Jonesboro Muni setting and increase all MDAs 60 feet, increase LNAV Cat C visibility 1/8 SM.

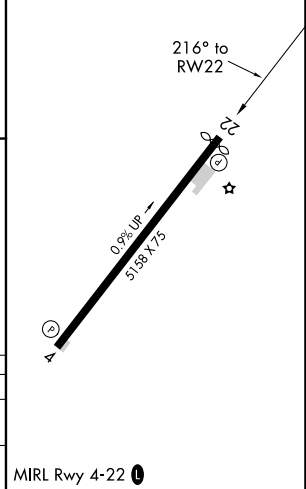
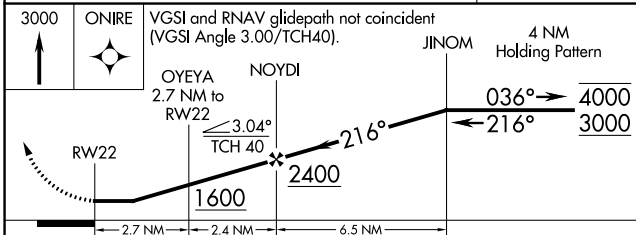
**▲** NA

MISSED APPROACH: Climb to 3000 direct ONIRE and hold.

ARG AWOS-3PT <b>135.925</b>	MEMPHIS CENTER <b>120.075 289.4</b>	UNICOM <b>122.7 (CTAF) 0</b>
--------------------------------	--	---------------------------------



ELEV 717	TDZE 717
----------	----------



CATEGORY	A	B	C	D
LNAV MDA	1360-1	643 (700-1)	1360-1 7/8 643 (700-1 7/8)	NA
CIRCLING	1400-1	683 (700-1)	1400-2 683 (700-2)	NA

MIRL Rwy 4-22 0

SC-1, 09 SEP 2021 to 07 OCT 2021

SC-1, 09 SEP 2021 to 07 OCT 2021