

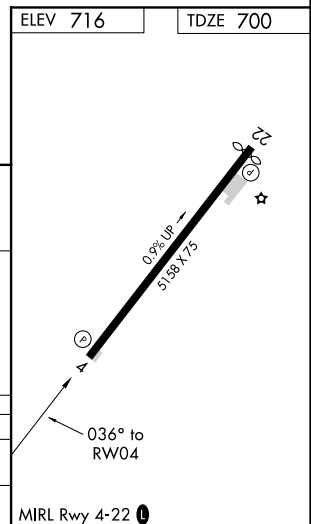
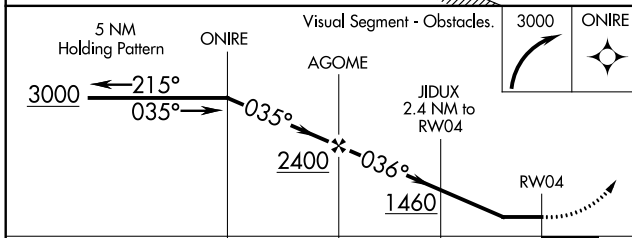
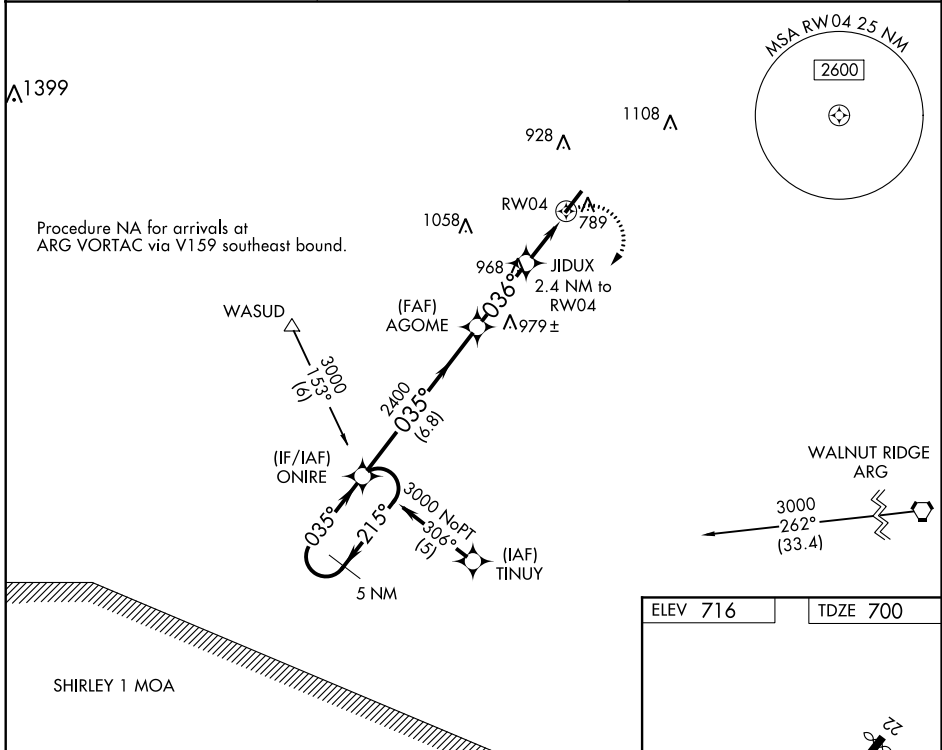
APP CRS	Rwy Idg	<b>5158</b>
<b>036°</b>	TDZE	<b>700</b>
	Apt Elev	<b>716</b>

# RNAV (GPS) RWY 4

SHARP COUNTY RGNL (CVK)

RNP APCH.	Use Walnut Ridge altimeter setting; if not received, use Jonesboro altimeter setting and increase all MDAs 60 feet. Rwy 4 helicopter visibility reduction below 1 SM NA. Straight-in Rwy 4 NA at night, Circling Rwy 4 NA at night.	MISSED APPROACH: Climbing right turn to 3000 direct ONIRE and hold.
▼ Use Walnut Ridge altimeter setting; if not received, use Jonesboro altimeter setting and increase all MDAs 60 feet. Rwy 4 helicopter visibility reduction below 1 SM NA. Straight-in Rwy 4 NA at night, Circling Rwy 4 NA at night.		

ARG AWOS-3PT <b>135,925</b>	MEMPHIS CENTER <b>120,075 289,4</b>	UNICOM <b>122.7 (CTAF)</b>
--------------------------------	--	-------------------------------



CATEGORY	A	B	C	D
LNVA MDA	1260-1	560 (600-1)	1260-1½ 560 (600-1½)	NA
CIRCLING	1400-1	684 (700-1)	1400-2 684 (700-2)	NA

SC-1, 09 SEP 2021 to 07 OCT 2021

SC-1, 09 SEP 2021 to 07 OCT 2021