

VOR/DME SCB 111.0 Chan 47	APP CRS 147°	Rwy Idg TDZE 1204 Apt Elev 1204
---	------------------------	---

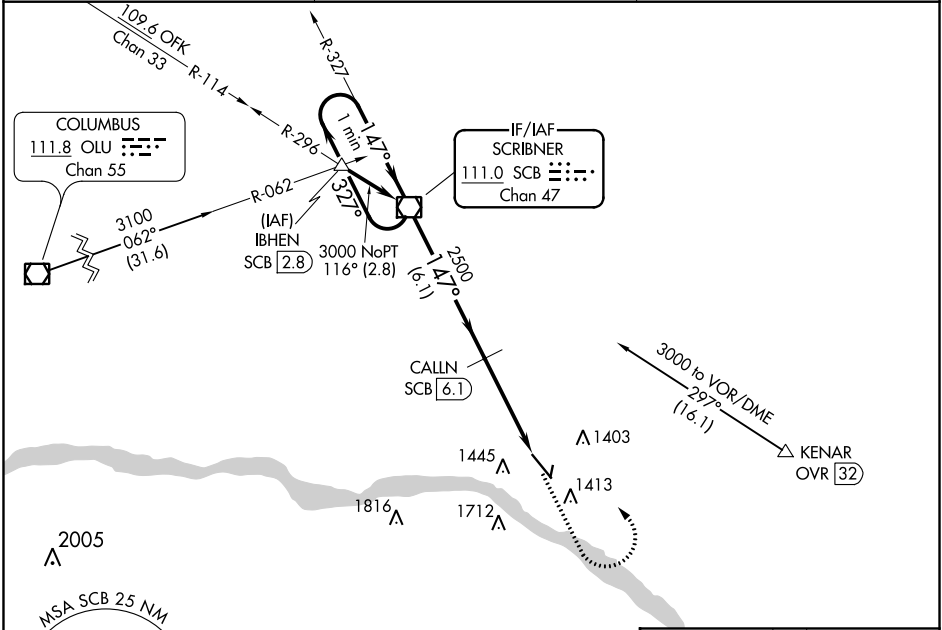
VOR RWY 14

FREMONT MUNI (F'ET)

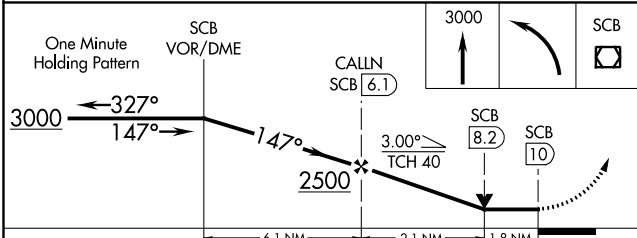
V VDP NA with Blair altimeter setting. Rwy 14 helicopter visibility reduction below 1 SM NA. When local altimeter setting not received, use Blair altimeter setting and increase all MDA 60 feet; increase S-14 Cat C visibility 1/8 mile. DME required.

NA MISSED APPROACH: Climb to 3000 then left turn direct SCB VOR/DME and hold.

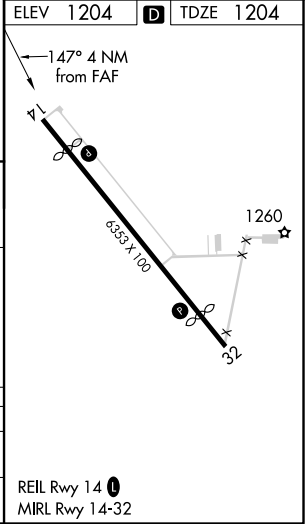
AWOS-3 121.275	OMAHA APP CON 120.1 354.05	UNICOM 122.8 (CTAF) 0
--------------------------	--------------------------------------	--



ELEV 1204	D TDZE 1204
-----------	--------------------



CATEGORY	A	B	C	D
S-14	1820-1	616 (700-1)	1820-1 3/4 616 (700-1 3/4)	NA
C CIRCLING	1820-1	616 (700-1)	2020-2 1/2 816 (900-2 1/2)	NA



NC-2, 09 SEP 2021 to 07 OCT 2021

NC-2, 09 SEP 2021 to 07 OCT 2021