

APP CRS	Rwy Idg	6930
169°	TDZE	32
	Apt Elev	34

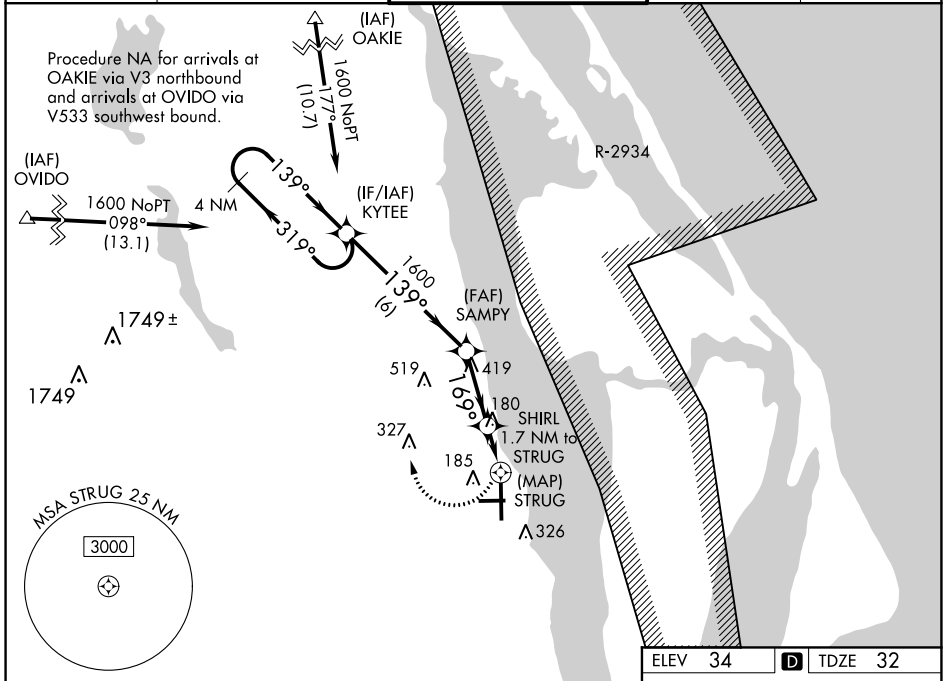
RNAV (GPS) Y RWY 18

SPACE COAST RGNL (TIX)

▼ DME/DME RNP-0.3 NA. Visibility reduction by helicopters NA.
▲ When control tower closed, use Melbourne altimeter setting.
 VDP NA when using Melbourne altimeter setting.

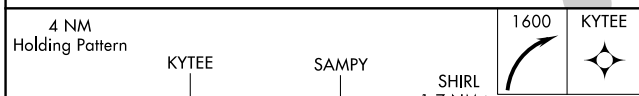
MISSED APPROACH: Climbing right turn to 1600 direct KYTEE and hold.

ATIS 120.625	ORLANDO APP CON 134.95 281.425	SPACE COAST TOWER ★ 118.9 (CTAF) 0	GND CON 121.85	UNICOM 122.95
------------------------	--	--	--------------------------	-------------------------



SE-3, 09 SEP 2021 to 07 OCT 2021

SE-3, 09 SEP 2021 to 07 OCT 2021



ELEV 34	D TDZE 32
---------	------------------

CATEGORY	A	B	C	D
LNVA MDA	440-1	408 (500-1)	440-1¼	408 (500-1¼)
CIRCLING	640-1	606 (700-1)	640-1¾	640-2
			606 (700-1¾)	606 (700-2)

MELBOURNE ALTIMETER SETTING MINIMUMS				
LNVA MDA	500-1	468 (500-1)	500-1¼	500-1½
			468 (500-1¼)	468 (500-1½)
CIRCLING	700-1	666 (700-1)	700-1¾	700-2
			666 (700-1¾)	666 (700-2)

