

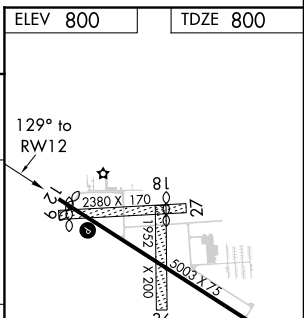
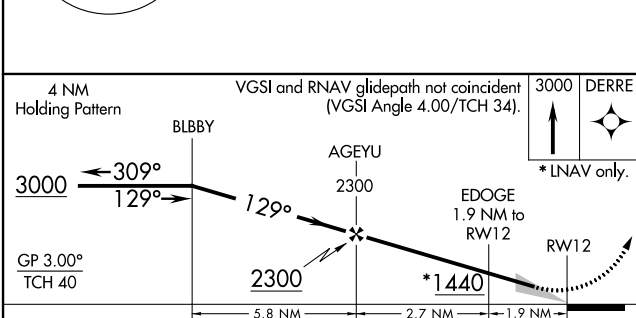
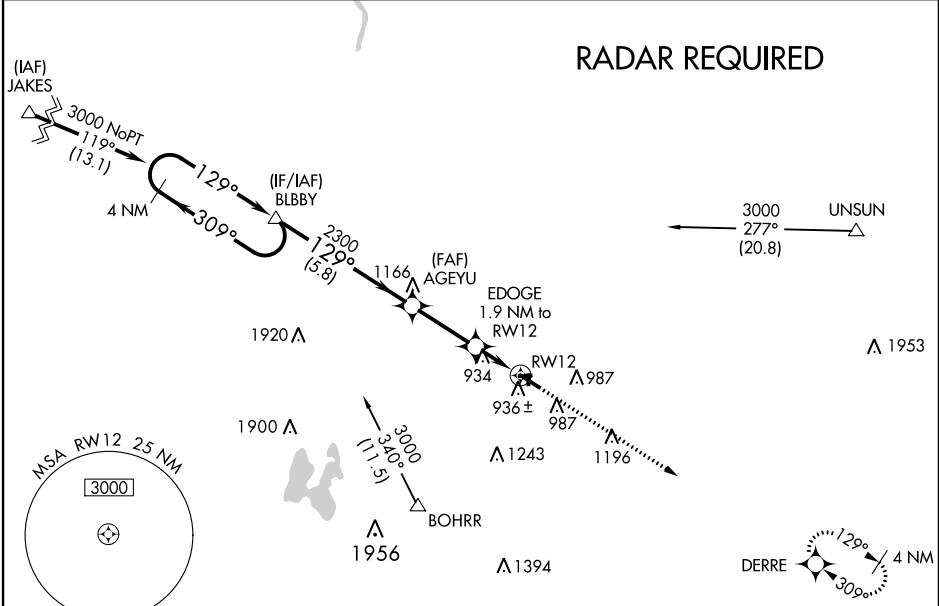
WAAS CH 53326 W12A	APP CRS 129°	Rwy Idg TDZE Apt Elev	4762 800 800
--	------------------------	-----------------------------	---

RNAV (GPS) RWY 12

HASTINGS (9D9)

<p>⚠ NA</p> <p>Circling NA to Rwy's 9, 18, 27 and 36. Baro-VNAV NA. DME/DME RNP-0.3 NA. Use Grand Rapids altimeter setting; when not received, use Ionia altimeter setting: increase LPV DA to 1102 feet; increase LNAV/VNAV DA to 1260 feet and all visibilities $\frac{1}{8}$ SM; increase all MDA 20 feet, and LNAV visibility Cat C $\frac{1}{8}$ SM.</p>	<p>MISSED APPROACH: Climb to 3000 direct DERRE and hold.</p>
--	--

GRR ASOS 118.725	GREAT LAKES APP CON * 128.4 257.6	UNICOM 123.075 (CTAF) 0
----------------------------	---	-----------------------------------



CATEGORY	A	B	C	D
LPV DA	1087-1 287 (300-1)			NA
LNAV/VNAV DA	1245-1 $\frac{1}{8}$ 445 (500-1 $\frac{1}{8}$)			NA
LNAV MDA	1240-1	440 (500-1)	1240-1 $\frac{1}{4}$ 440 (500-1 $\frac{1}{4}$)	NA
C CIRCLING	1380-1 580 (600-1)	1420-1 620 (700-1)	1440-1 $\frac{3}{4}$ 640 (700-1 $\frac{3}{4}$)	NA

MIRL Rwy 12-30 **0**
REIL Rwy's 12 and 30 **0**

EC-1, 09 SEP 2021 to 07 OCT 2021

EC-1, 09 SEP 2021 to 07 OCT 2021