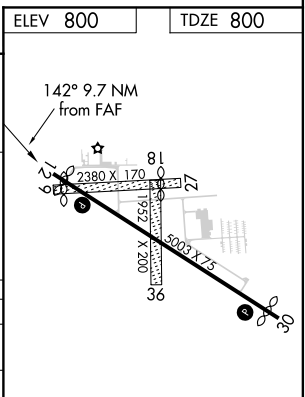
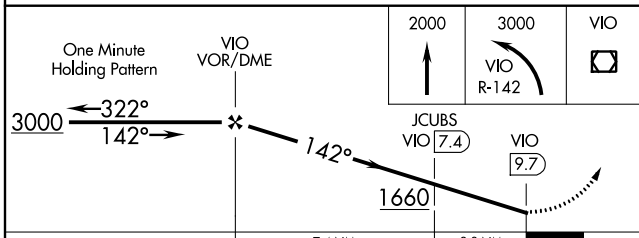
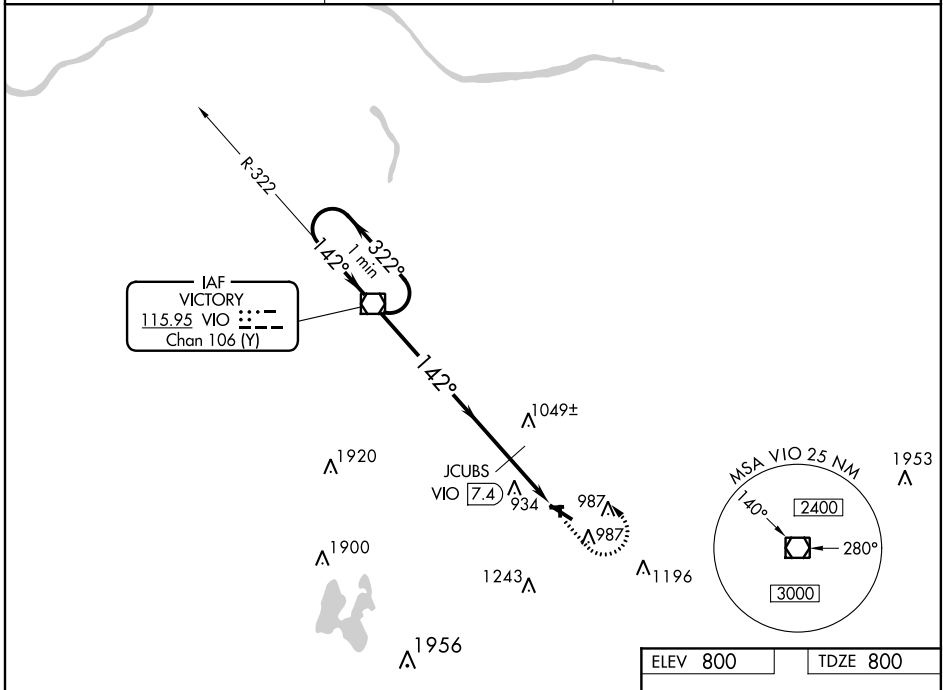


VOR/DME VIO 115.95 Chan 106 (Y)	APP CRS 142°	Rwy Idg 4763 TDZE 800 Apt Elev 800
---	------------------------	---

VOR RWY 12

HASTINGS (9D9)

<p>∇ Helicopter visibility reduction below 3/4 SM NA. Use Grand Rapids altimeter setting; when not received, use Ionia altimeter setting and increase all MDA 20 feet. Increase JCUBS DME minimums S-12 Cat C visibility 1/8 mile. Circling NA to Rwy 9, 18, 27, 36.</p> <p>Δ NA</p>	<p>MISSED APPROACH: Climb to 2000, then climbing left turn to 3000 on VIO VOR/DME R-142 to VIO VOR/DME and hold.</p>	
<p>GRR ASOS 118.725</p>	<p>GREAT LAKES APP CON * 128.4 257.6</p>	<p>UNICOM 123.075 (CTAF) 0</p>



CATEGORY	A	B	C	D
S-12	1660-1 860 (900-1)	1660-1¼ 860 (900-1¼)	1660-2½ 860 (900-2½)	NA
C CIRCLING	1660-1 860 (900-1)	1660-1¼ 860 (900-1¼)	1660-2½ 860 (900-2½)	NA
JCUBS DME MINIMUMS				
S-12	1340-1	540 (600-1)	1340-1½ 540 (600-1½)	NA
C CIRCLING	1380-1 580 (600-1)	1420-1 620 (700-1)	1440-1¾ 640 (700-1¾)	NA

ELEV 800	TDZE 800				
<p>MIRL Rwy 12-30 0 REIL Rwy 12 and 30 0</p> <p>FAF to MAP 9.7 NM</p>					
Knots	60	90	120	150	180
Min:Sec	9:42	6:28	4:51	3:53	3:14

EC-1, 09 SEP 2021 to 07 OCT 2021

EC-1, 09 SEP 2021 to 07 OCT 2021