

| | | | |
|--|------------------------|-----------------------------|---|
| WAAS CH 72938 W19A | APP CRS 191° | Rwy Idg TDZE Apt Elev | 4802 356 358 |
|--|------------------------|-----------------------------|---|

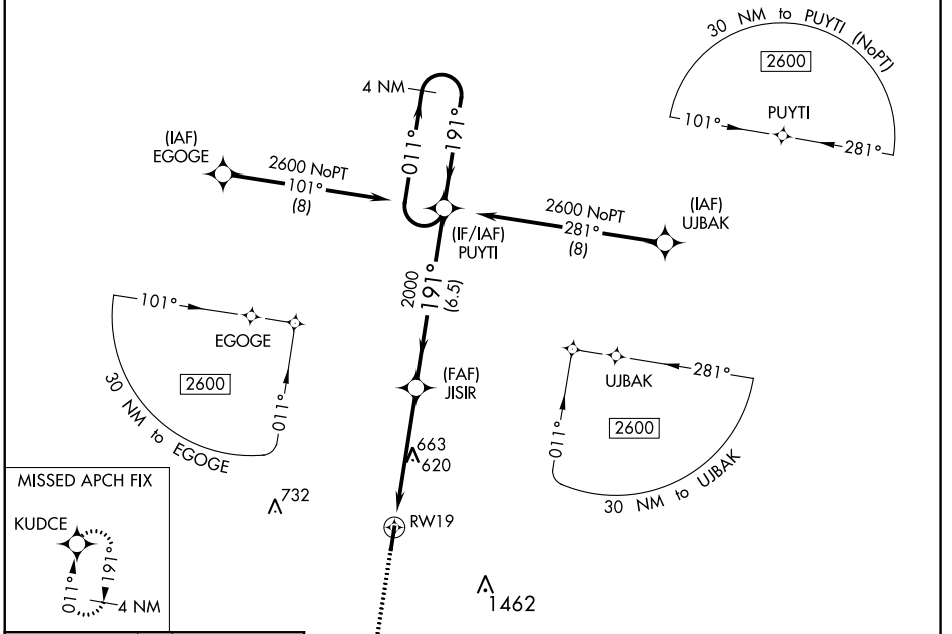
RNAV (GPS) RWY 19

GIBSON COUNTY (TGC)

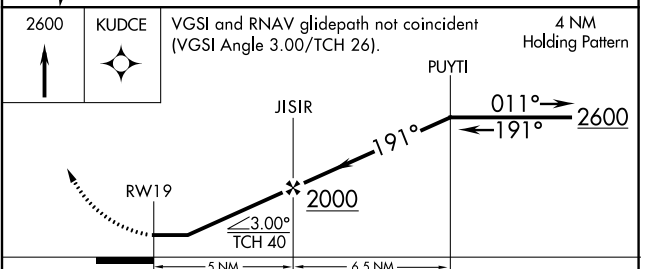
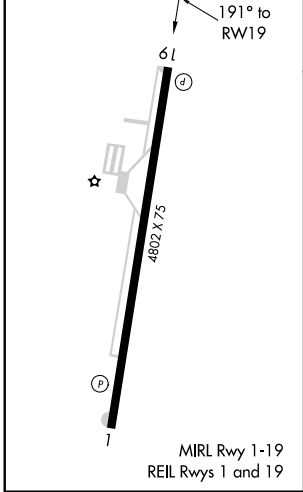
⚠ Night landing: Rwy 19 NA. DME/DME RNP-0.3 NA. Helicopter visibility reduction below 1 SM NA. Obtain local altimeter setting on CTAF; when not received use McKellar-Sipes Rgnl altimeter setting and increase all MDA 60 feet, increase Circling Cat C visibility ¼ mile.

MISSED APPROACH: Climb to 2600 direct KUDCE and hold.

| | |
|--|-------------------------------|
| MEMPHIS CENTER 134.65 316.15 | UNICOM 122.8 (CTAF) |
|--|-------------------------------|



| | |
|----------|----------|
| ELEV 358 | TDZE 356 |
|----------|----------|



| CATEGORY | A | B | C | D |
|-------------------|-------|-------------|------------------------|-------------------------|
| LP MDA | 920-1 | 564 (600-1) | 920-1½ | 564 (600-1½) |
| LNAV MDA | 940-1 | 584 (600-1) | 940-1¾ | 584 (600-1¾) |
| C CIRCLING | 980-1 | 622 (700-1) | 980-1¾ 622 (700-1¾) | 1780-3 1422 (1500-3) |

SE-1, 09 SEP 2021 to 07 OCT 2021

SE-1, 09 SEP 2021 to 07 OCT 2021