

LOC I-GTR	APP CRS	Rwy Idg	<b>8003</b>
<b>110.7</b>	<b>182°</b>	TDZE	<b>264</b>
		Apt Elev	<b>264</b>

# ILS or LOC RWY 18

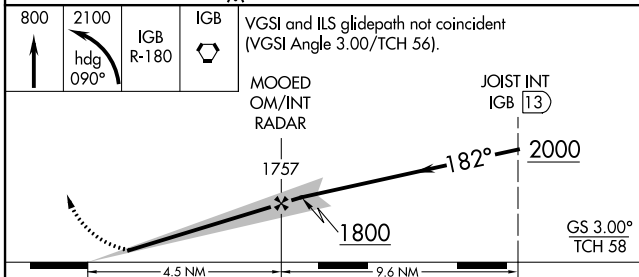
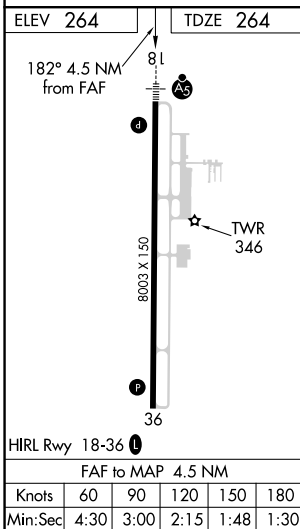
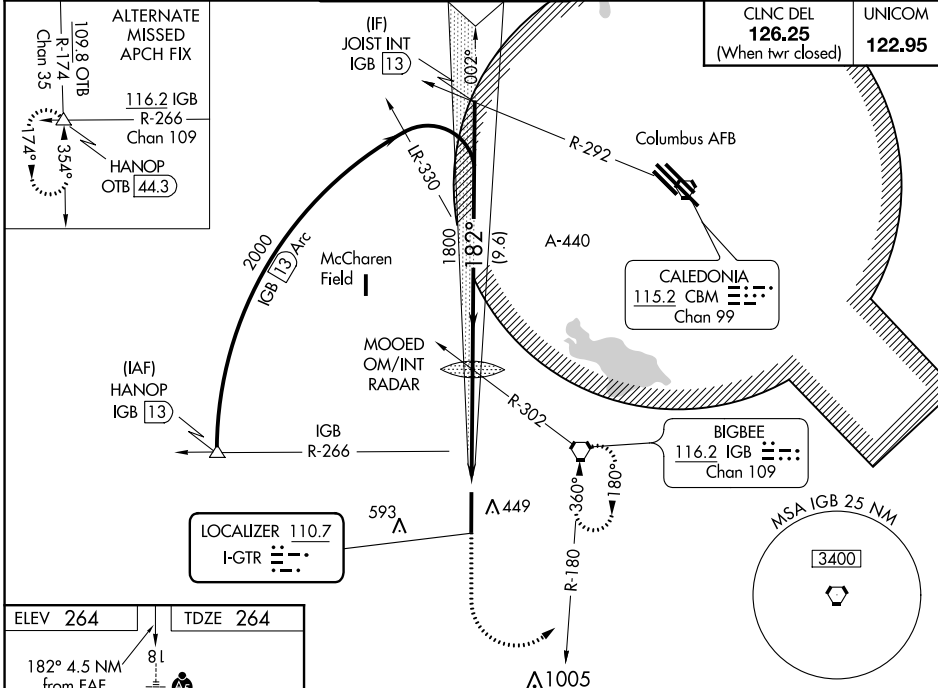
GOLDEN TRIANGLE RGNL (GTR)

**▲** For inop MALSR, increase S-ILS 18 Cat E visibility to ¾ mile, S-LOC 18 Cat E visibility to 1½ mile. When local altimeter setting not received, use Columbus AFB altimeter setting and increase DA 39 feet and all MDA 40 feet; increase S-LOC 18 Cats C/D/E visibility to ¾ mile. For inop MALSR when using Columbus AFB altimeter setting, increase S-ILS 18 Cat E visibility to ¾ mile, S-LOC 18 Cat E visibility to 1½ mile.



**MISSED APPROACH:** Climb to 800 then climbing left turn to 2100 on heading 090° and on IGB R-180 to IGB VORTAC and hold.

ATIS <b>126.375</b>	COLUMBUS APP CON * <b>135.6 323.275</b>	GOLDEN TRIANGLE TOWER * <b>118.2 (CTAF) 0 298.875</b>	GND CON <b>135.375 322.475</b>	CLNC DEL <b>135.375 322.475</b>
------------------------	--	--	-----------------------------------	------------------------------------



CATEGORY	A	B	C	D	E
S-ILS 18	464-½ 200 (200-½)				
S-LOC 18	660-½	396 (400-½)	660-⅝		396 (400-⅝)
<b>C</b> CIRCLING	760-1	496 (500-1)	960-2 696 (700-2)	960-2¼ 696 (700-2¼)	960-2½ 696 (700-2½)

SC-4, 09 SEP 2021 to 07 OCT 2021

SC-4, 09 SEP 2021 to 07 OCT 2021