

| | | |
|---|------------------------|---|
| LOC/DME I-RVT 111.15 Chan 48(Y) | APP CRS 002° | Rwy Idg 8003 TDZE 261 Apt Elev 264 |
|---|------------------------|---|

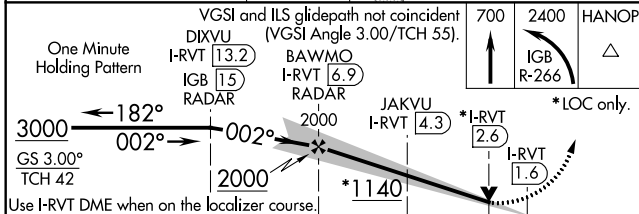
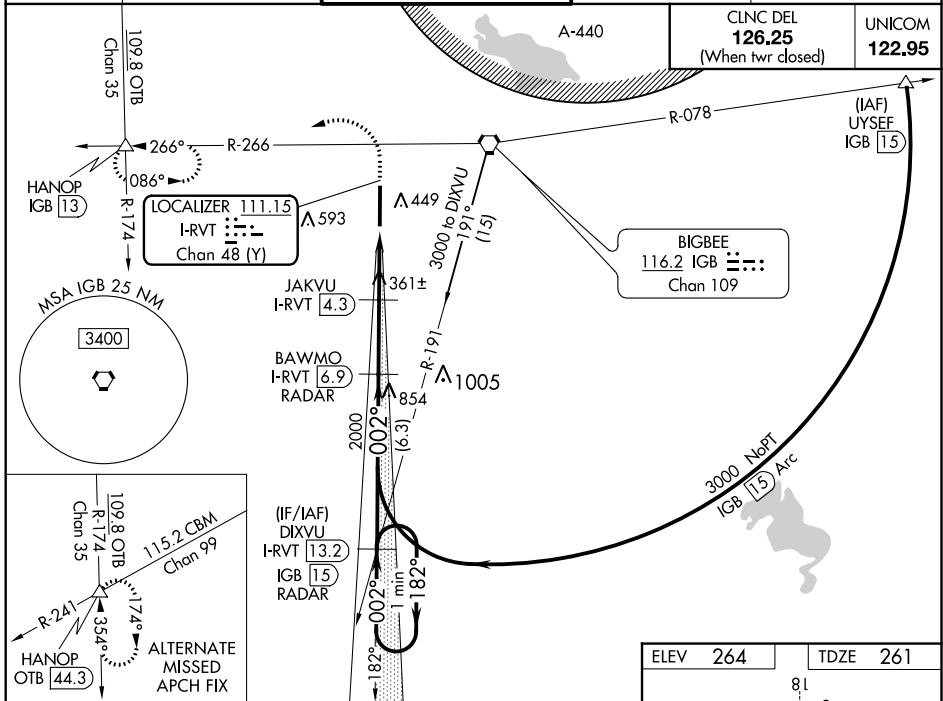
ILS or LOC RWY 36

GOLDEN TRIANGLE RGNL (GTR)

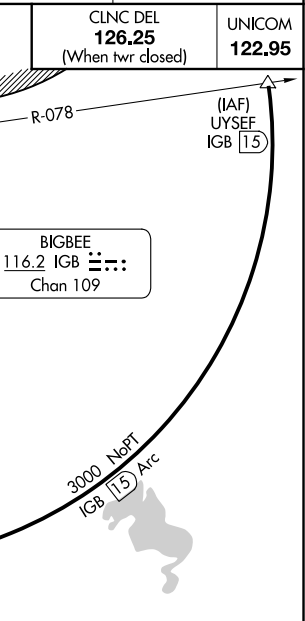
▲ DME or RADAR Required. VDP NA when using Columbus AFB altimeter setting. When local altimeter setting not received, use Columbus AFB altimeter setting and increase all DA 39 feet and all MDA 40 feet; increase Circling Cats C/D ¼ mile, increase JAKVU Fix Minimums S-LOC 36 Cats C/D/E visibility ½ mile and Circling Cats C/D/E visibility ¼ mile.

MISSED APPROACH: Climb to 700 then climbing left turn to 2400 on IGB VORTAC R-266 to HANOP INT/IGB 13 DME and hold.

| | | | | |
|------------------------|---|---|-----------------------------------|------------------------------------|
| ATIS 126.375 | COLUMBUS APP CON* 135.6 323.275 | GOLDEN TRIANGLE TOWER* 118.2 (CTAF) 0 298.875 | GND CON 135.375 322.475 | CLNC DEL 135.375 322.475 |
|------------------------|---|---|-----------------------------------|------------------------------------|



| | | | | | | |
|----------------------------|----------|--------------|--------------|--------------|--------------|------------|
| One Minute Holding Pattern | 3000 | 2000 | 1140 | 700 | 2400 | HANOP |
| | ← 182° | ← 002° | ← 002° | ↑ | ↙ | △ |
| | GS 3.00° | GS 3.00° | GS 3.00° | IGB | IGB | |
| | TCH 42 | TCH 42 | TCH 42 | R-266 | R-266 | |
| | | | | *I-RVT 2.6 | *I-RVT 1.6 | *LOC only. |
| | | | | | | |
| CATEGORY | A | B | C | D | E | |
| S-ILS 36 | | 461-¾ | 200 (200-¾) | | | |
| S-LOC 36 | 1140-1¼ | 879 (900-1¼) | 1140-2½ | 879 (900-2½) | | |
| C CIRCLING | 1140-1¼ | 876 (900-1¼) | 1140-2½ | 1140-2¾ | 1140-3 | |
| | | | 876 (900-2½) | 876 (900-2¾) | 876 (900-3) | |
| JAKVU FIX MINIMUMS | | | | | | |
| S-LOC 36 | | 620-1 | 359 (400-1) | | | |
| C CIRCLING | 760-1 | 496 (500-1) | 960-2 | 960-2¼ | 960-2½ | |
| | | | 696 (700-2) | 696 (700-2¼) | 696 (700-2½) | |



| | |
|----------------------|--------------------------|
| ELEV 264 | TDZE 261 |
| 81 | AS |
| 36 | TWR 346 |
| 002° 5.4 NM from FAF | |
| HIRL Rwy 18-36 | |
| F knots | 60 90 120 150 180 |
| Min:Sec | 5:24 3:36 2:42 2:10 1:48 |

SC-4, 09 SEP 2021 to 07 OCT 2021

SC-4, 09 SEP 2021 to 07 OCT 2021