


WAAS CH 63203 W18A	APP CRS 182°	Rwy Idg TDZE Apt Elev	8003 264 264
--	------------------------	-----------------------------	---

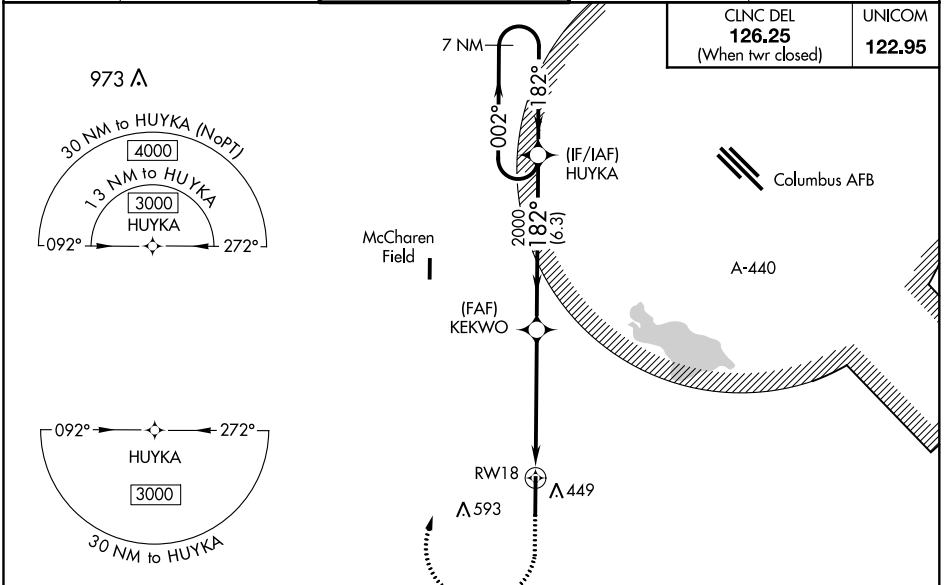
RNAV (GPS) RWY 18

GOLDEN TRIANGLE RGNL (GTR)

⚠ For uncompensated Baro-VNAV systems, LNAV/VNAV NA below -15°C (5°F) or above 54°C (130°F). DME/DME RNP-0.3 NA. For inop MALS, increase LPV Cat E visibility ½ mile, increase LNAV/VNAV Cat E and LNAV Cat E visibility ½ mile. When local altimeter setting not received, use Columbus AFB altimeter setting and increase all DA 39 feet and all MDA 40 feet; increase LNAV/VNAV all Cats and LNAV Cats C/D/E visibility ⅛ mile. For inop MALS when using Columbus AFB altimeter setting, increase LPV Cat E visibility ¼ mile, increase LNAV/VNAV Cat E and LNAV Cat E visibility ½ mile. Baro-VNAV and VDP NA when using Columbus AFB altimeter setting.

MALS  MISSED APPROACH: Climb to 800 then climbing right turn to 3000 direct HUYKA and hold.

ATIS 126.375	COLUMBUS APP CON* 135.6 323.275	GOLDEN TRIANGLE TOWER* 118.2 (CTAF) 0 298.875	GND CON 135.375 322.475	CLNC DEL 135.375 322.475
------------------------	---	---	-----------------------------------	------------------------------------

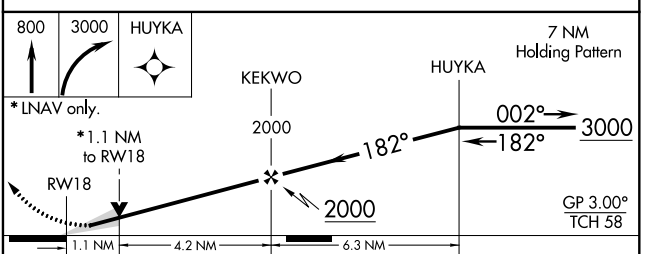
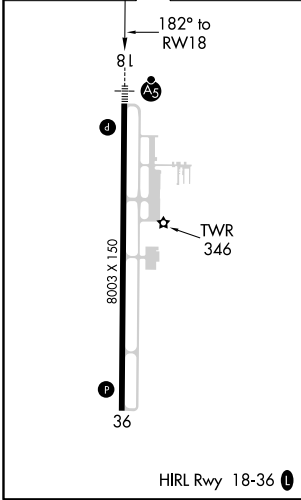


CLNC DEL 126.25 (When twr closed)	UNICOM 122.95
--	-------------------------

SC-4, 09 SEP 2021 to 07 OCT 2021

SC-4, 09 SEP 2021 to 07 OCT 2021

ELEV 264	TDZE 264
-----------------	-----------------



CATEGORY	A	B	C	D	E
LPV DA		464-½	200 (200-½)		
LNAV/VNAV DA		670-7/8	406 (500-7/8)		
LNAV MDA	660-½	396 (400-½)	660-5/8	396 (400-5/8)	
C CIRCLING	760-1	496 (500-1)	960-2 696 (700-2)	960-2¼ 696 (700-2¼)	960-2/2 696 (700-2/2)