

| | | | |
|----------------------------|------------------------|-----------------------|-------------------|
| LOC I-HSA 110.35 | APP CRS 182° | Rwy Idg 8497 | TDZE 23 |
| | | Apt Elev 23 | |

ILS Y or LOC Y RWY 18

STENNIS INTL (HSA)

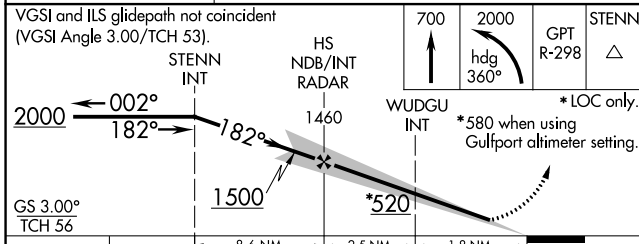
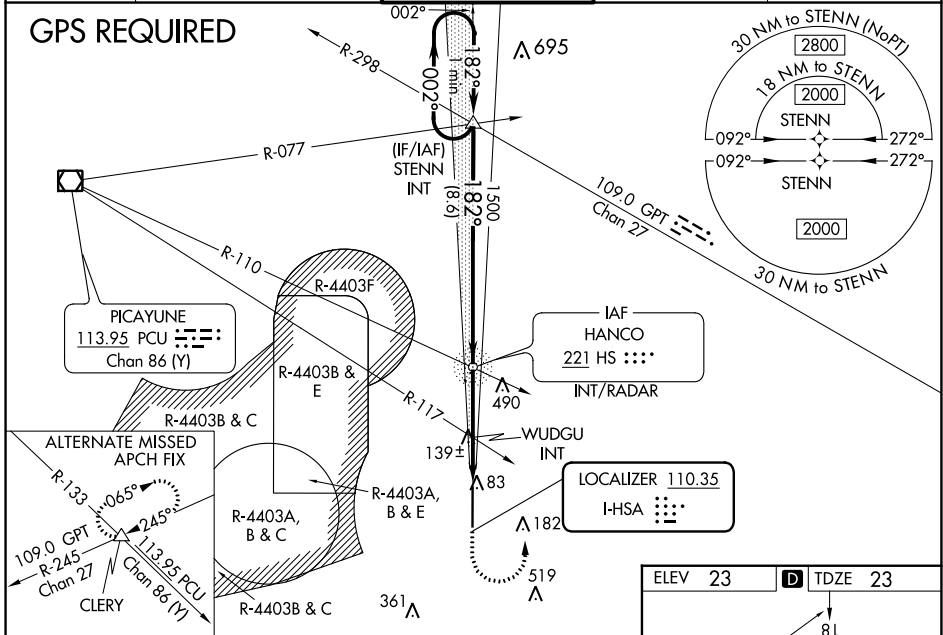
▲ Circling NA for Cat E west of Rwy 18-36. When local altimeter setting not received, use Gulfport altimeter setting: increase DA to 270 feet; increase all MDA 60 feet and S-LOC 18 Cats C/D/E visibility 1/8 mile, Circling Cat C visibility 1/8 mile and Cats D/E visibility 1/4 mile. WUDGU fix minimums: increase S-LOC 18 Cats C/D/E visibility 1/8 mile, and Circling Cats D/E visibility 1/4 mile. For inop MALSRR, increase S-ILS 18 Cat E visibility to 1/4 mile, and S-LOC 18 Cats C/D/E visibility to 1 1/8 mile. WUDGU fix minimums: increase S-LOC 18 Cats C/D/E visibility to 1 mile. For inop MALSRR when using Gulfport altimeter setting, increase S-ILS 18 Cat E visibility to 1/4 mile and S-LOC 18 Cat E visibility to 1 1/8 mile. WUDGU fix minimums: increase S-LOC 18 Cat E visibility to 1/4 mile.



MISSED APPROACH:
Climb to 700 then climbing left turn to 2000 on heading 360° and on GPT VORTAC R-298 to STENN and hold.

| | | | | |
|----------------------------|--|---|---------------------------|-------------------------|
| AWOS-3PT 118.375 | GULFPORT APP CON* 124.6 354.1 (130°-309°) 127.5 254.25 (310°-129°) | STENNIS TOWER* 127.15 (CTAF) 0 | GND CON 121.725 | UNICOM 122.95 |
|----------------------------|--|---|---------------------------|-------------------------|

GPS REQUIRED



| ELEV 23 | TDZE 23 | | | | | | | | | | | | | | |
|---|---------|-------------------|-------|------|------|-----|-----|-----|---------|------|------|------|------|------|--|
| | | | | | | | | | | | | | | | |
| <table border="1"> <thead> <tr> <th>FAF to MAP 4.3 NM</th> <th>Knots</th> <th>60</th> <th>90</th> <th>120</th> <th>150</th> <th>180</th> </tr> </thead> <tbody> <tr> <td>Min:Sec</td> <td>4:18</td> <td>2:52</td> <td>2:09</td> <td>1:43</td> <td>1:26</td> <td></td> </tr> </tbody> </table> | | FAF to MAP 4.3 NM | Knots | 60 | 90 | 120 | 150 | 180 | Min:Sec | 4:18 | 2:52 | 2:09 | 1:43 | 1:26 | |
| FAF to MAP 4.3 NM | Knots | 60 | 90 | 120 | 150 | 180 | | | | | | | | | |
| Min:Sec | 4:18 | 2:52 | 2:09 | 1:43 | 1:26 | | | | | | | | | | |

| CATEGORY | A | B | C | D | E |
|--|-----------------------|---------------|-----------------------|---------------|-----------------|
| S-ILS 18 | 223-1/2 200 (200-1/2) | | | | |
| S-LOC 18 | 520-1/2 | 497 (500-1/2) | 520-1 497 (500-1) | | |
| CIRCLING | 520-1 | 497 (500-1) | 520-1 1/2 | 820-2 1/2 | 820-2 3/4 |
| WUDGU FIX MINIMUMS (DUAL VOR RECEIVERS REQUIRED) | | | | | |
| S-LOC 18 | 400-1/2 | 377 (400-1/2) | 400-5/8 377 (400-5/8) | | |
| CIRCLING | 480-1 | 457 (500-1) | 520-1 1/2 | 820-2 1/2 | 820-2 3/4 |
| | | | 497 (500-1/2) | 797 (800-2/2) | 797 (800-2 3/4) |

SC-4, 09 SEP 2021 to 07 OCT 2021

SC-4, 09 SEP 2021 to 07 OCT 2021