

WAAS CH <b>58224</b> <b>W18A</b>	APP CRS <b>182°</b>	Rwy Idg TDZE <b>23</b> Apt Elev <b>23</b>	<b>8497</b>
--	------------------------	---	-------------

# RNAV (GPS) RWY 18

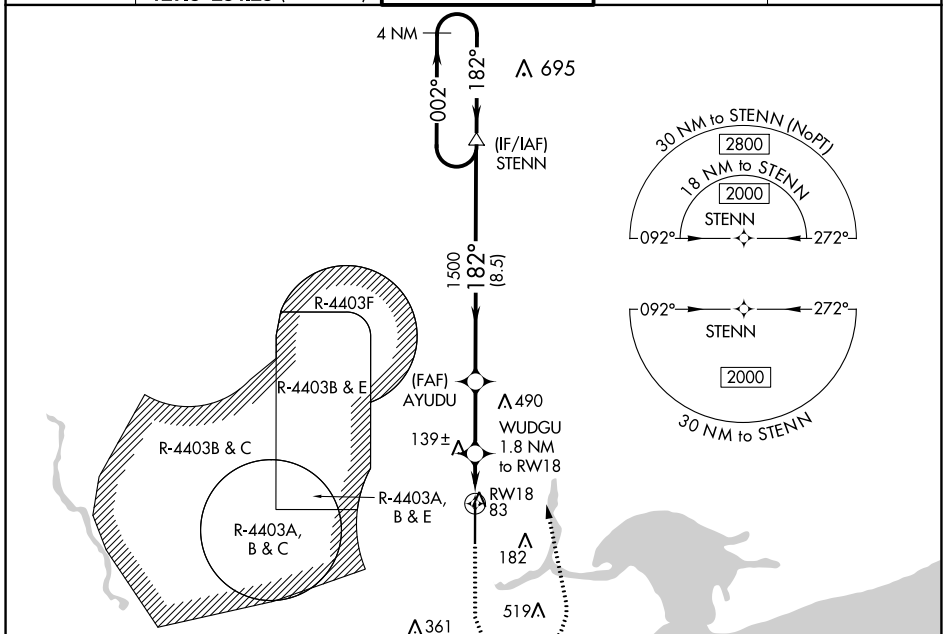
STENNIS INTL (HSA)

**⚠** For uncompensated Baro-VNAV systems, LNAV/VNAV NA below -15°C (5°F) or above 54°C (130°F). Circling NA for Cat E west of Rwy 18-36. Baro-VNAV and VDP NA when using Gulfport altimeter setting. DME/DME RNP-0.3 NA. When local altimeter setting not received, use Gulfport altimeter setting: increase LPV DA to 247 feet; increase LNAV/VNAV DA to 373 feet; increase all MDA 60 feet and LNAV Cats C/D/E visibility 1/8 mile, and Circling Cats D/E visibility 1/4 mile. For inop MALSRS, increase LNAV Cats C/D/E visibility to 1 mile. For inop MALSRS when using Gulfport altimeter setting, increase LNAV Cat E visibility to 1 1/4 mile.

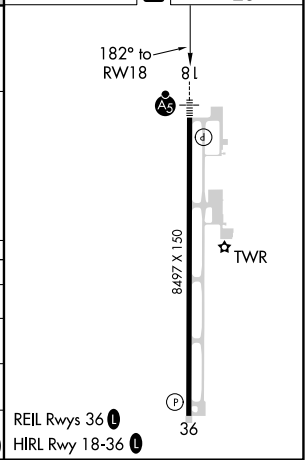
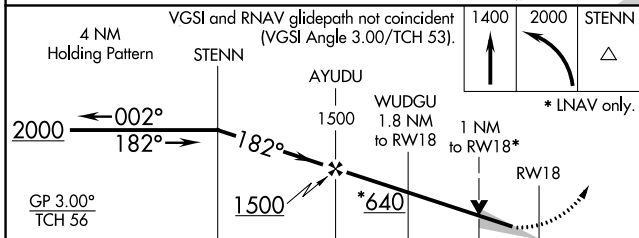
**MALSRS**

**MISSED APPROACH:**  
Climb to 1400, then climbing left turn to 2000 direct STENN and hold.

AWOS-3PT <b>118.375</b>	GULFPORT APP CON* <b>124.6 354.1</b> (130°-309°) <b>127.5 254.25</b> (310°-129°)	STENNIS TOWER* <b>127.15</b> (CTAF) <b>0</b>	GND CON <b>121.725</b>	UNICOM <b>122.95</b>
----------------------------	--	---	---------------------------	-------------------------



ELEV 23	<b>D</b> TDZE 23
---------	------------------



CATEGORY	A	B	C	D	E
LPV DA		223-1/2	200 (200-1/2)		
LNAV/VNAV DA		326-1/2	303 (400-1/2)		
LNAV MDA	400-1/2	377 (400-1/2)	400-5/8	377 (400-5/8)	
<b>C</b> CIRCLING	480-1	457 (500-1)	520-1 1/2 497 (500-1 1/2)	820-2 1/2 797 (800-2 1/2)	820-2 3/4 797 (800-2 3/4)

REIL Rwys 36 **0**  
HIRL Rwy 18-36 **0**

SC-4, 09 SEP 2021 to 07 OCT 2021

SC-4, 09 SEP 2021 to 07 OCT 2021