

DENTON, TEXAS

AL-5866 (FAA)

21224

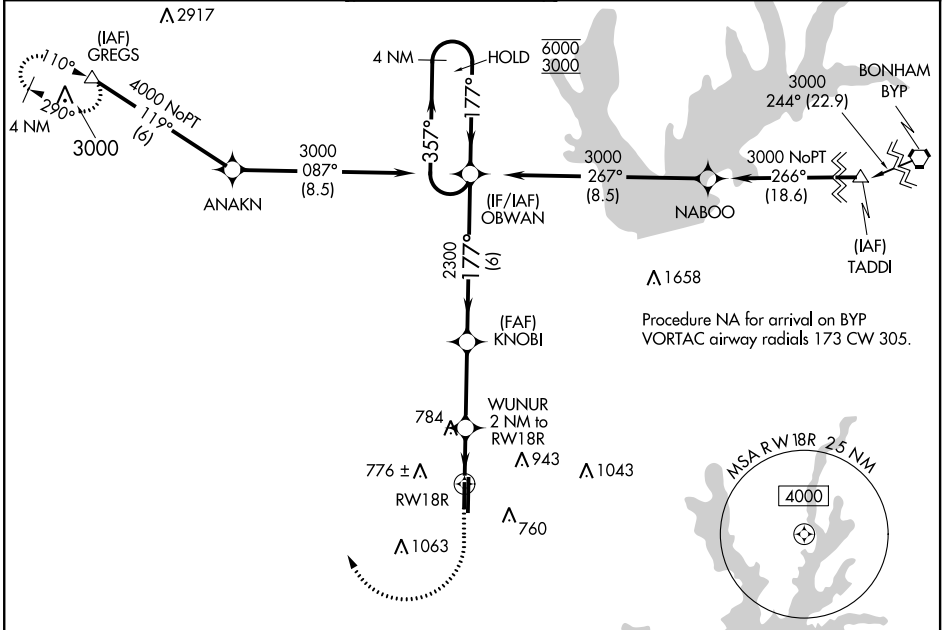
WAAS CH <b>97643</b> <b>W18B</b>	APP CRS <b>177°</b>	Rwy Idg TDZE Apt Elev	18R <b>5003</b> <b>643</b> <b>643</b>	18L <b>6502</b> <b>642</b> <b>643</b>
--	------------------------	-----------------------------	--	--

# RNAV (GPS) RWY 18R

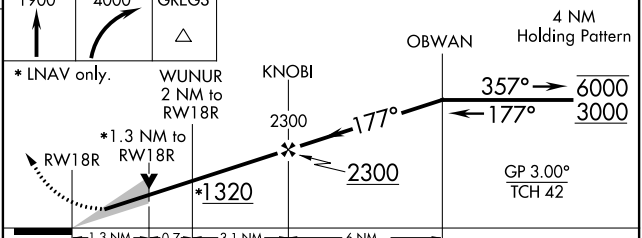
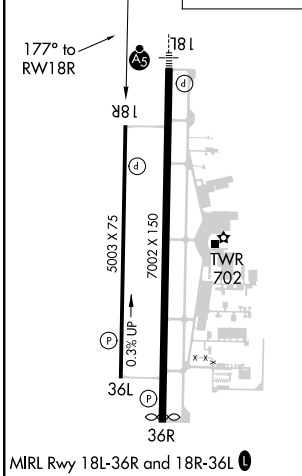
DENTON ENTERPRISE (D'TO)

RNP APCH.		MISSED APPROACH: Climb to 1900 then climbing right turn to 4000 direct GREGS and hold.			
<p><b>▽</b> For uncompensated Baro-VNAV systems, LNAV/VNAV NA below -9°C or above 54°C.</p>					

ASOS <b>119.325</b>	REGIONAL APP CON <b>118.1 306.95</b>	DENTON TOWER* <b>119.95 (CTAF)</b>	GND CON <b>123.95</b>	CLNC DEL <b>123.95</b>	UNICOM <b>122.95</b>
------------------------	---	---------------------------------------	--------------------------	---------------------------	-------------------------



ELEV 643	<b>D</b>	TDZE 18R 643 TDZE 18L 642
----------	----------	------------------------------



CATEGORY	A	B	C	D
LPV DA		893-3/4	250 (300-3/4)	
LNAV/VNAV DA		926-7/8	283 (300-7/8)	
LNAV MDA	1100-1	457 (500-1)	1100-1 3/8	457 (500-1 3/8)
SIDESTEP 18L	1100-1 1/4	458 (500-1 1/4)	1100-1 3/4	1100-2 1/4
	457 (500-1)	617 (700-1)	1380-2	1380-2 1/4
			737 (800-2)	737 (800-2 1/4)

DENTON, TEXAS  
Orig 31DEC20

33°12'N-97°12' W

# DENTON ENTERPRISE (D'TO) RNAV (GPS) RWY 18R

SC-2, 09 SEP 2021 to 07 OCT 2021

SC-2, 09 SEP 2021 to 07 OCT 2021