

WAAS CH <b>56543</b> <b>W36B</b>	APP CRS <b>357°</b>	Rwy Idg 36L <b>5003</b> 36R <b>6502</b> TDZE <b>636</b> 639 Apt Elev <b>643</b> 643
--	------------------------	---

# RNAV (GPS) RWY 36L

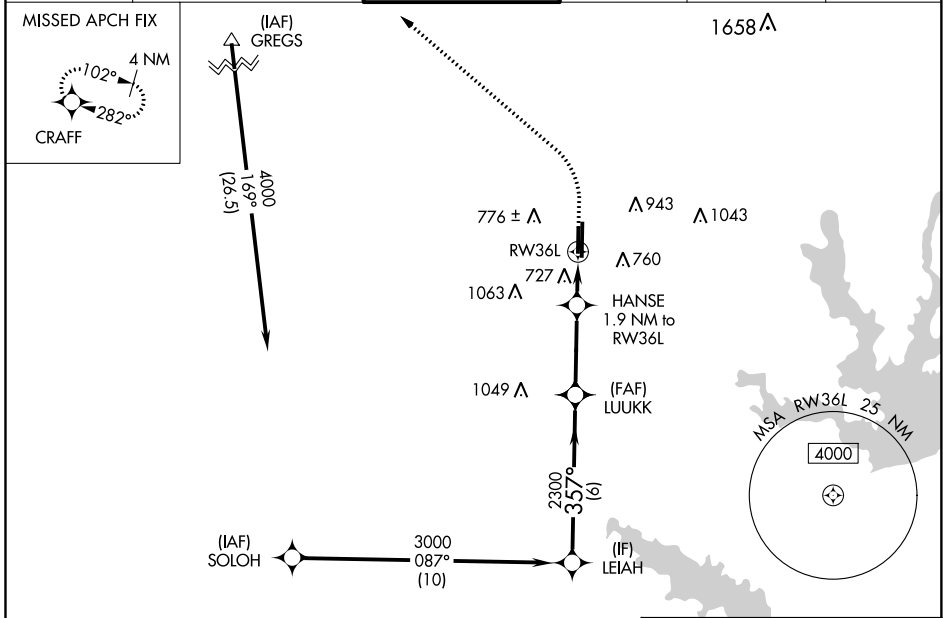
DENTON ENTERPRISE (D'TO)

RNP APCH.

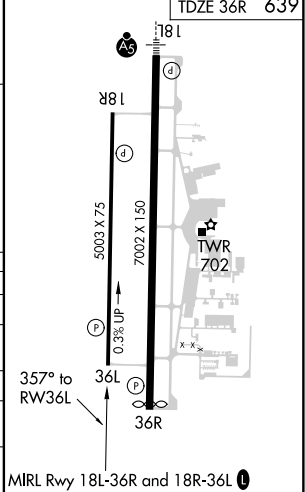
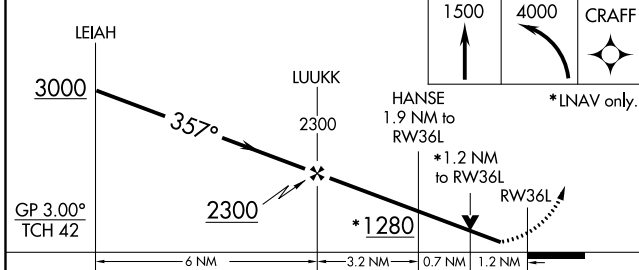
**⚠** Rwy 36L helicopter visibility reduction below ¾ SM NA. For uncompensated Baro-VNAV systems, LNAV/VNAV NA below -9°C or above 54°C.

MISSED APPROACH: Climb to 1500 then climbing left turn to 4000 direct CRAFT and hold, continue climb-in-hold to 4000.

ASOS <b>119.325</b>	REGIONAL APP CON <b>118.1 306.95</b>	<b>DENTON TOWER ★</b> <b>119.95 (CTAF) 0</b>	GND CON <b>123.95</b>	CLNC DEL <b>123.95</b>	UNICOM <b>122.95</b>
------------------------	---	---	--------------------------	---------------------------	-------------------------



ELEV	643	D	TDZE 36L	636
			TDZE 36R	639



CATEGORY	A	B	C	D
LPV DA		886-1	250 (300-1)	
LNAV/VNAV DA		987-1	351 (400-1)	
LNAV MDA		980-1	344 (400-1)	
SIDESTEP 36R	1040-1¼ 401 (400-1¼)	401 (400-1¼)	1040-1¾ 401 (400-1¾)	1040-2¼ 401 (400-2¼)
<b>C</b> CIRCLING	1100-1 457 (500-1)	1260-1 617 (700-1)	1380-2 737 (800-2)	1380-2¼ 737 (800-2¼)

SC-2, 09 SEP 2021 to 07 OCT 2021

SC-2, 09 SEP 2021 to 07 OCT 2021