


LOC I-UUR <b>111.1</b>	APP CRS <b>176°</b>	Rwy Idg TDZE Apt Elev	<b>6500</b> <b>414</b> <b>425</b>
---------------------------	------------------------	-----------------------------	---

# ILS or LOC RWY 18

ROSCOE TURNER (CRX)

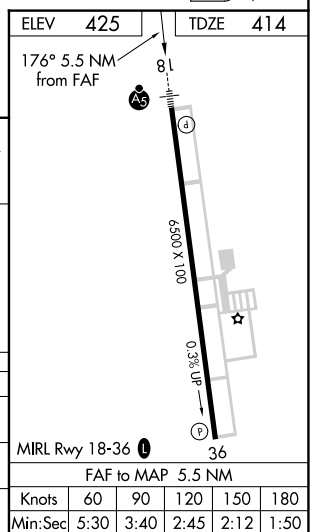
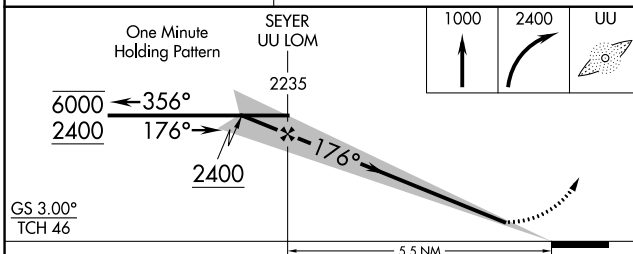
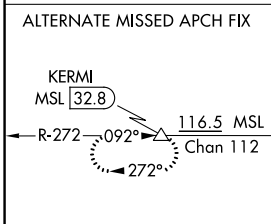
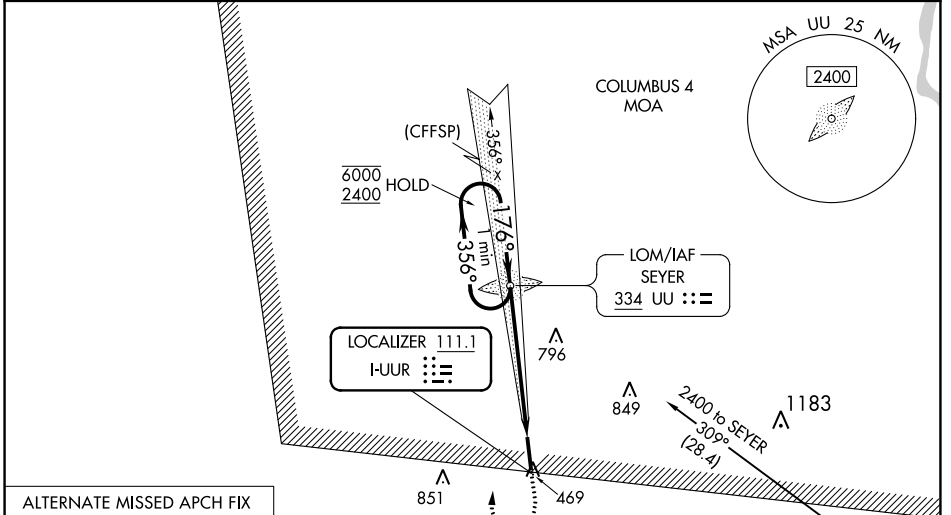
ADF required. DME required.

**⚠** When local altimeter setting not received, use Selmer altimeter setting and increase S-ILS 18 DA to 682 and all MDAs 80 feet and increase S-LOC 18 Cat C/D visibility to 1½ SM, Circling Cat C to 2 SM, Cat D to 2¾ SM. For inop ALS when using Selmer altimeter setting, increase S-ILS 18 all Cats visibility to ¾ SM. Autopilot coupled approach NA below 1040.

**MALSR** 

**MISSED APPROACH:**  
Climb to 1000 then climbing right turn to 2400 direct UU LOM and hold.

AWOS-3PT <b>118.675</b>	MEMPHIS CENTER <b>135.9 273.55</b>	UNICOM <b>122.8 (CTAF) 0</b>
----------------------------	---------------------------------------	---------------------------------



CATEGORY	A	B	C	D
S-ILS 18		614-½	200 (200-½)	
S-LOC 18	1020-½	606 (600-½)	1020-1¾	606 (600-1¾)
<b>C</b> CIRCLING	1020-1	595 (600-1)	1080-1¾	1160-2¼
			655 (700-1¾)	735 (800-2¼)

SC-4, 09 SEP 2021 to 07 OCT 2021

SC-4, 09 SEP 2021 to 07 OCT 2021