

APP CRS	Rwy Idg	<b>3881</b>
<b>262°</b>	TDZE	<b>53</b>
	Apt Elev	<b>53</b>

# RNAV (GPS) RWY 26

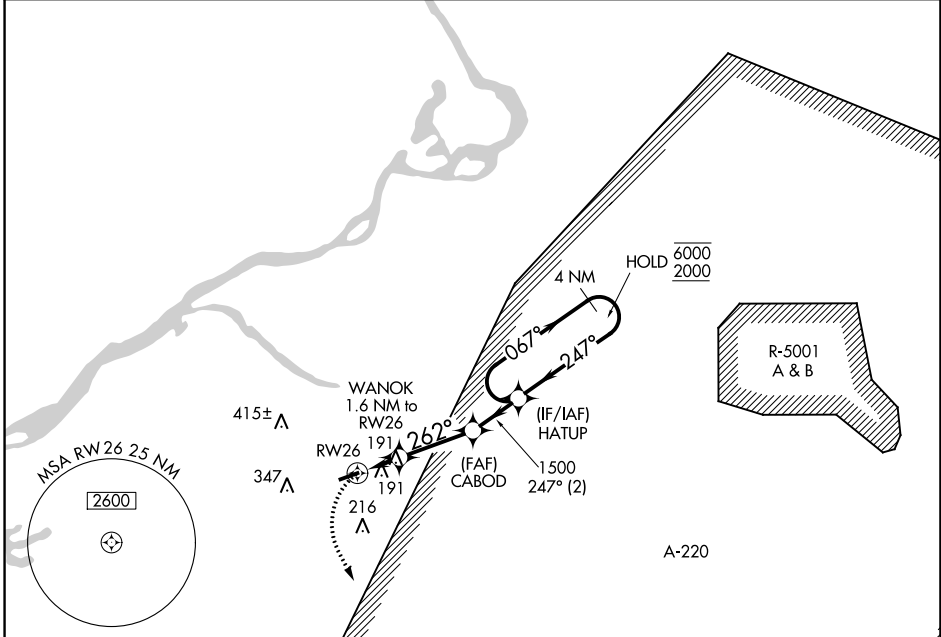
SOUTH JERSEY RGNL (VAY)

RNP APCH.

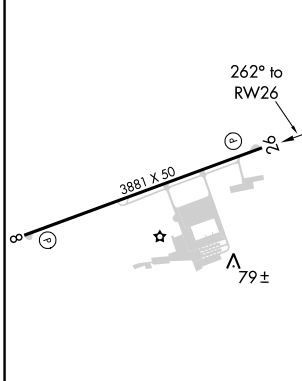
Rwy 26 helicopter visibility reduction below 1 SM NA. Procedure NA at night.

MISSED APPROACH:  
Climbing left turn to 2000  
direct INNEZ and hold.

ASOS	MC GUIRE APP CON	GCO	UNICOM	
<b>119.325</b>	<b>126.475 363.8</b>	<b>121.725</b>	<b>122.8 (CTAF)</b>	<b>123.3</b>



ELEV 53	TDZE 53
---------	---------



	2000	INNEZ	△	
	1.6 NM	WANOK	1.6 NM to RW26	
	600	CABOD	1.5 NM	
	1.6 NM	262°	247°	
	2.8 NM	2.0 NM	HATUP	4 NM Holding Pattern
			067°	6000
			247°	2000
CATEGORY	A	B	C	D
LNAV MDA	480-1	427 (500-1)	NA	
CIRCLING	520-1	540-1	NA	
	467 (500-1)	487 (500-1)		

MIRL Rwy 8-26  
REIL Rwy 8 and 26

NE-2, 09 SEP 2021 to 07 OCT 2021

NE-2, 09 SEP 2021 to 07 OCT 2021