

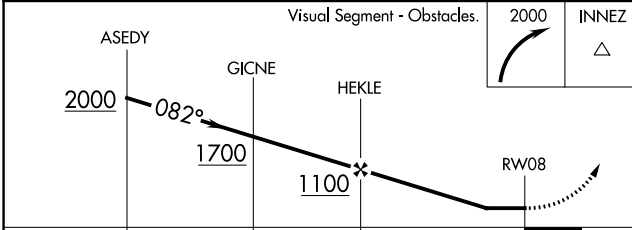
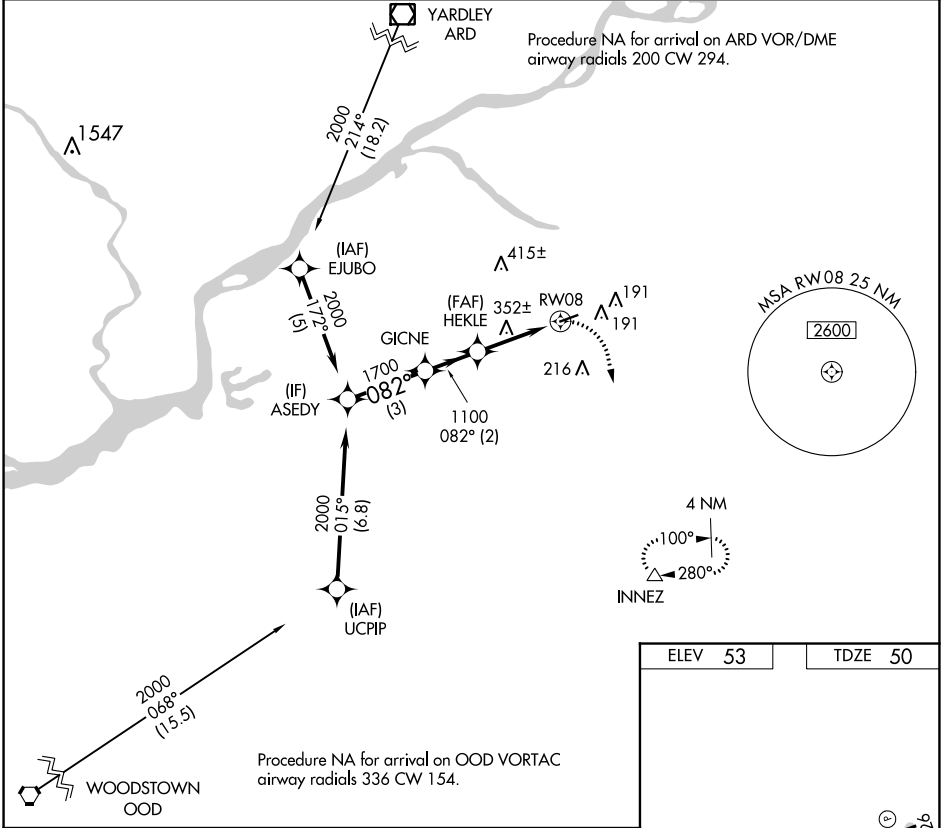
WAAS CH <b>69324</b> <b>W08A</b>	APP CRS <b>082°</b>	Rwy Idg TDZE Apt Elev	<b>3881</b> <b>50</b> <b>53</b>
--	------------------------	-----------------------------	---------------------------------------

# RNAV (GPS) RWY 8

SOUTH JERSEY RGNL (VAY)

RNP APCH.	MISSED APPROACH: Climbing right turn to 2000 direct INNEZ and hold.
<p>▼ Procedure NA at night.</p> <p>▲ Rwy 8 helicopter visibility reduction below 1 SM NA.</p>	

ASOS <b>119.325</b>	MC GUIRE APP CON <b>126.475 363.8</b>	GCO <b>121.725</b>	UNICOM <b>122.8</b> (CTAF)	<b>123.3</b>
------------------------	--	-----------------------	-------------------------------	--------------



ELEV 53	TDZE 50
---------	---------

CATEGORY	A	B	C	D
LP MDA	660-1	610 (700-1)		NA
LNAV MDA	660-1	610 (700-1)		NA
CIRCLING	660-1	607 (700-1)		NA

MRL Rwy 8-26

REIL Rws 8 and 26

NE-2, 09 SEP 2021 to 07 OCT 2021

NE-2, 09 SEP 2021 to 07 OCT 2021