

WAAS CH 86735 W36A	APP CRS 001°	Rwy Idg TDZE Apt Elev	6000 401 402
---------------------------------	------------------------	-----------------------------	---

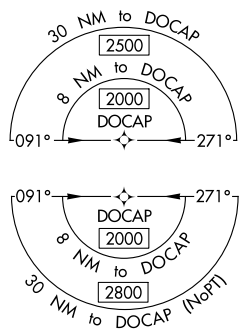
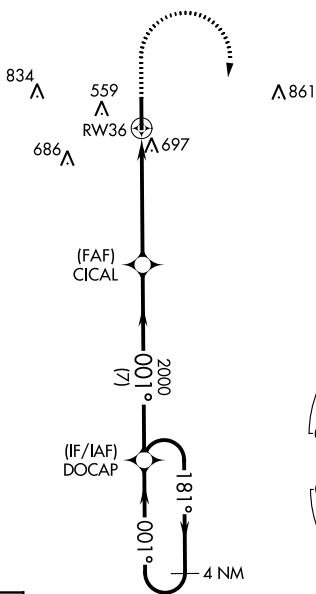
RNAV (GPS) RWY 36

OLIVE BRANCH (OLV)

⚠ For uncompensated Baro-VNAV systems, LNAV/VNAV NA below -15°C (5°F) or above 54°C (130°F). DME/DME RNP-0.3 NA. When local altimeter setting not received, use Memphis Intl altimeter setting and increase all DA 32 feet and all MDA 40 feet; increase LPV and LNAV/VNAV all Cats and LNAV Cats C and D and Circling Cats C and D visibility ¼ mile. VDP and Baro-VNAV NA with Memphis Intl altimeter setting. Rwy 36 helicopter visibility reduction below ¾ SM NA.

⚠ MISSED APPROACH: Climb to 1500 then climbing right turn to 2000 direct DOCAP and hold.

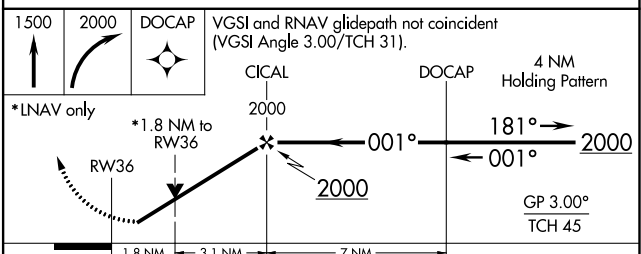
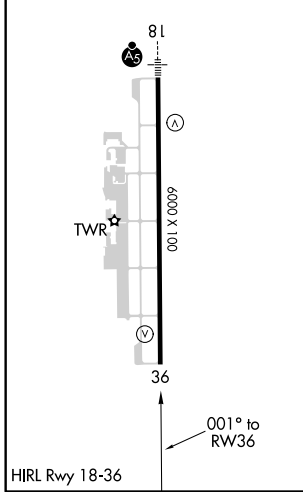
ATIS 119.925	MEMPHIS APP CON 125.8 338.3	OLIVE BRANCH TOWER ★ 125.275 (CTAF) 0	GND CON 121.2	CLNC DEL 121.2	CLNC DEL 121.3 (When twr closed)	UNICOM 122.95
------------------------	---------------------------------------	---	-------------------------	--------------------------	---	-------------------------



SC-4, 09 SEP 2021 to 07 OCT 2021

SC-4, 09 SEP 2021 to 07 OCT 2021

ELEV 402	TDZE 401
-----------------	-----------------



CATEGORY	A	B	C	D
LPV DA		709-1	308 (400-1)	
LNAV/VNAV DA		915-1¾	514 (600-1¾)	
LNAV MDA	1000-1	599 (600-1)	1000-1¾	599 (600-1¾)
C CIRCLING	1060-1	658 (700-1)	1060-1¾ 658 (700-1¾)	1200-2½ 798 (800-2½)