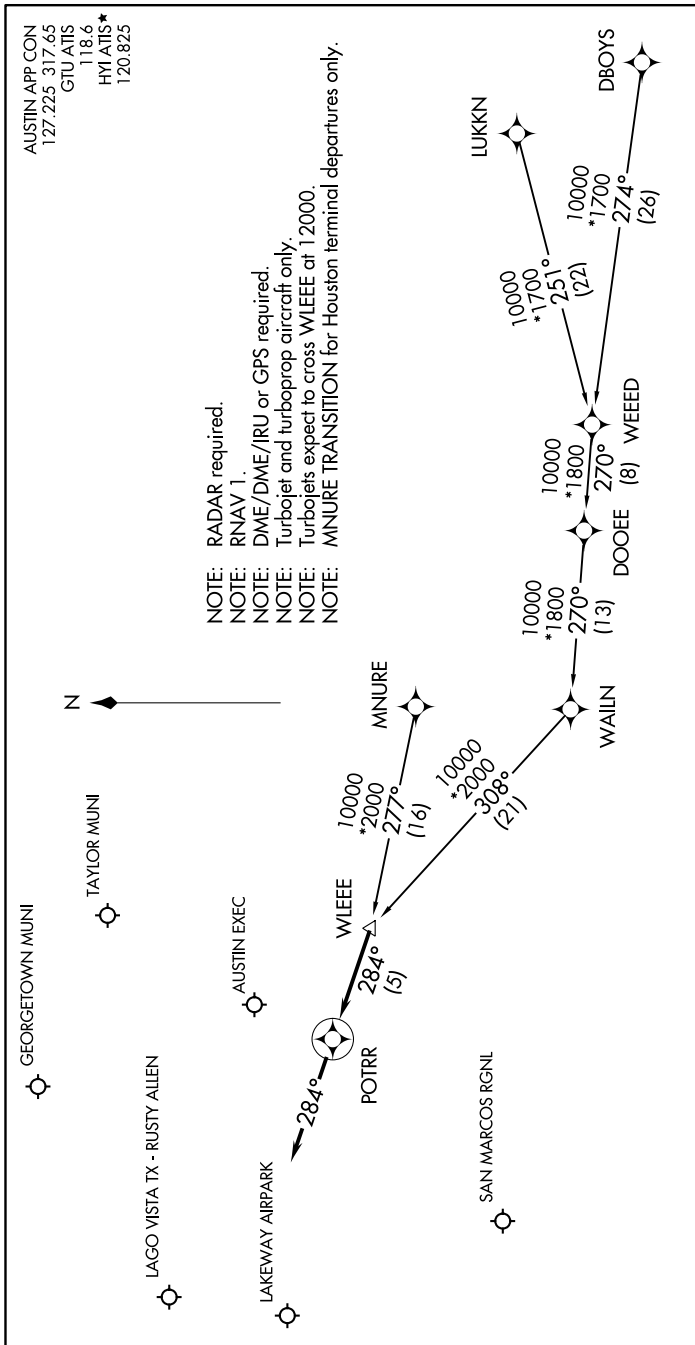


POTRR ONE ARRIVAL (RNAV)

AUSTIN, TEXAS

SC-3, 09 SEP 2021 to 07 OCT 2021



NOTE: RADAR required.
 NOTE: RNAV 1.
 NOTE: DME/DME/IRU or GPS required.
 NOTE: Turbojet and turboprop aircraft only.
 NOTE: Turbojets expect to cross WLEEE at 12000.
 NOTE: MNJURE TRANSITION for Houston terminal departures only.

AUSTIN APP CON
 127.225 317.65
 GTU ATIS
 118.6
 HMI ATIS
 120.825

ARRIVAL ROUTE DESCRIPTION

DBOYS TRANSITION (DBOYS.POTRR1)
LUKKN TRANSITION (LUKKN.POTRR1)
MNJURE TRANSITION (MNJURE.POTRR1)
WEEED TRANSITION (WEEED.POTRR1)

LANDING ALL AIRPORTS: From WLEEE on track 284° to POTRR, then on track 284°. Expect RADAR vectors to final approach course.

POTRR ONE ARRIVAL (RNAV)

AUSTIN, TEXAS

SC-3, 09 SEP 2021 to 07 OCT 2021