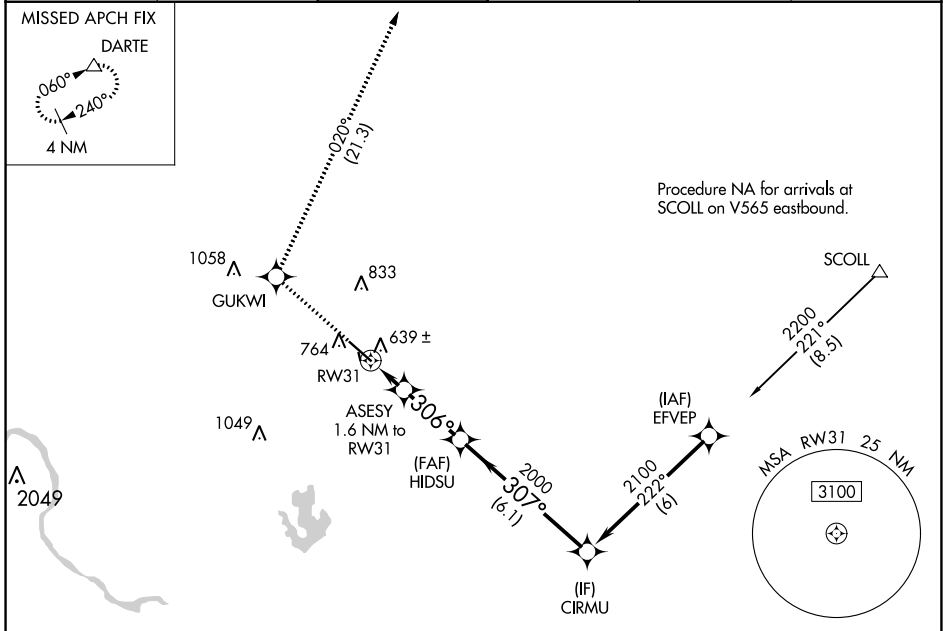


WAAS CH 45916 W31A	APP CRS 306°	Rwy Idg 6025 TDZE 612 Apt Elev 620
--	------------------------	---

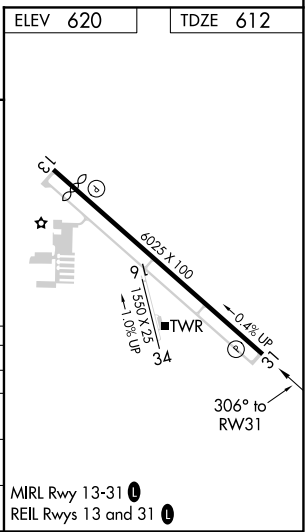
RNAV (GPS) RWY 31

AUSTIN EXEC (EDC)

RNP APCH.				MISSED APPROACH: Climb to 3500 direct GUKWI and on track 020° to DARTE and hold.	
<p>▼ Circling NA to Rwy 16 and 24. For uncompensated Baro-VNAV systems, LNAV/VNAV NA below -16°C or above 54°C.</p>					
AWOS-3 118.825	AUSTIN APP CON 127.225 317.65	EXECUTIVE TOWER★ 120.3 (CTAF) 0	GND CON 119.45	CLNC DEL 126.025 (when twr closed)	UNICOM 122.975



ELEV 620	TDZE 612			
3500	GUKWI	tr 020°	DARTE	CIRMU
*LNAV only.				
CATEGORY	A	B	C	D
LPV DA		812-3/4	200 (200-3/4)	
LNAV/VNAV DA		909-7/8	297 (300-7/8)	
LNAV MDA	900-1 288 (300-1)		900-7/8 288 (300-7/8)	
CIRCLING	1140-1	1160-1	1280-1 3/4	1280-2
	520 (600-1)	540 (600-1)	660 (700-1 3/4)	660 (700-2)



SC-3, 09 SEP 2021 to 07 OCT 2021

SC-3, 09 SEP 2021 to 07 OCT 2021