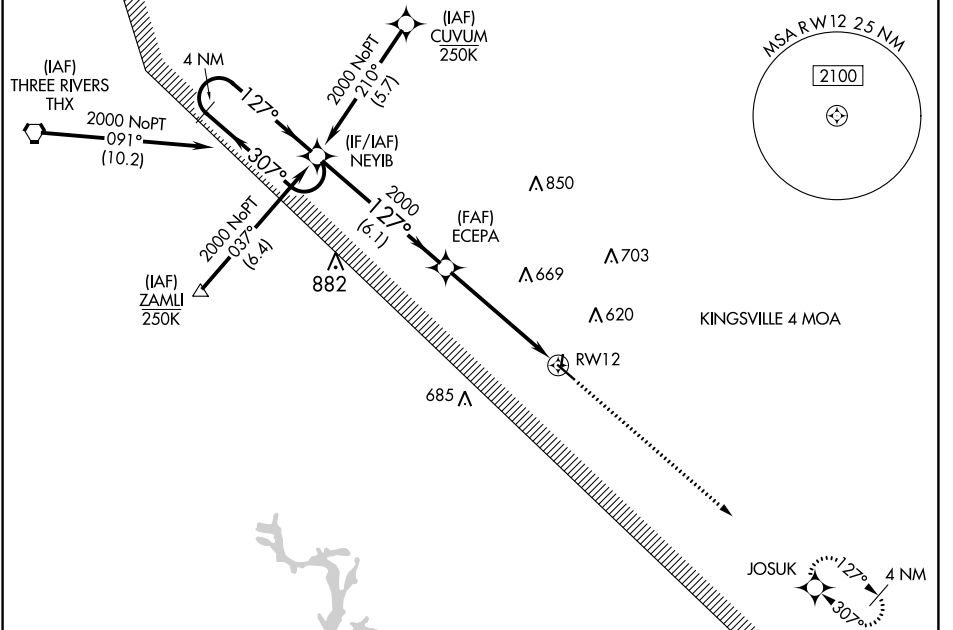


WAAS CH 49241 W12A	APP CRS 127°	Rwy Idg TDZE 268 Apt Elev 273	4553
--	------------------------	---	-------------

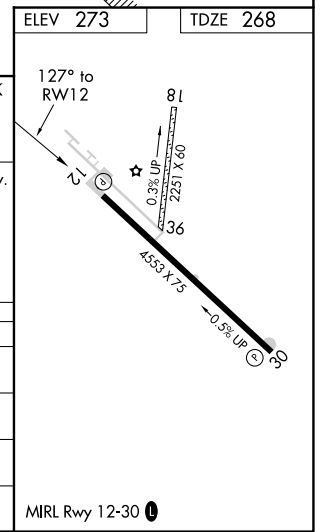
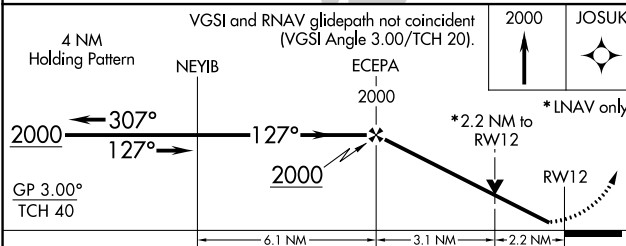
RNAV (GPS) RWY 12

BEEVILLE MUNI (B.E.A)

RNP APCH. ▼ For uncompensated Baro-VNAV systems, LNAV/VNAV NA below -15°C (5°F) or above 54°C (130°F). Circling Rwy 18 and 36 NA at night. Rwy 12 helicopter visibility reduction below ¼ SM NA.	MISSED APPROACH: Climb to 2000 direct JOSUK and hold.	
AWOS-3 118.675	HOUSTON CENTER 134.6 322.5	UNICOM 122.8 (CTAF) 0



ELEV 273	TDZE 268
----------	----------



CATEGORY	A	B	C	D
LPV DA	518-1	250 (300-1)		NA
LNAV/VNAV DA	880-1¾	612 (700-1¾)		NA
LNAV MDA	1000-1	732 (800-1)	1000-2 732 (800-2)	NA
CIRCLING	1000-1	727 (800-1)	1000-2 727 (800-2)	NA

SC-3, 09 SEP 2021 to 07 OCT 2021

SC-3, 09 SEP 2021 to 07 OCT 2021