

WAAS CH <b>82114</b> <b>W18A</b>	APP CRS <b>180°</b>	Rwy Idg <b>3200</b> TDZE <b>295</b> Apt Elev <b>296</b>
--	------------------------	---

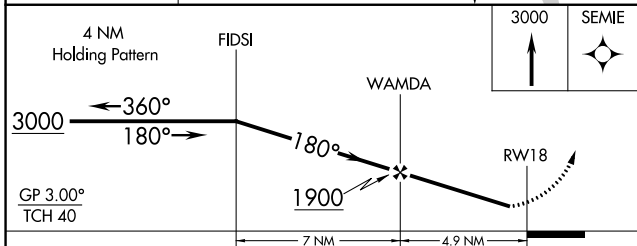
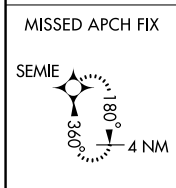
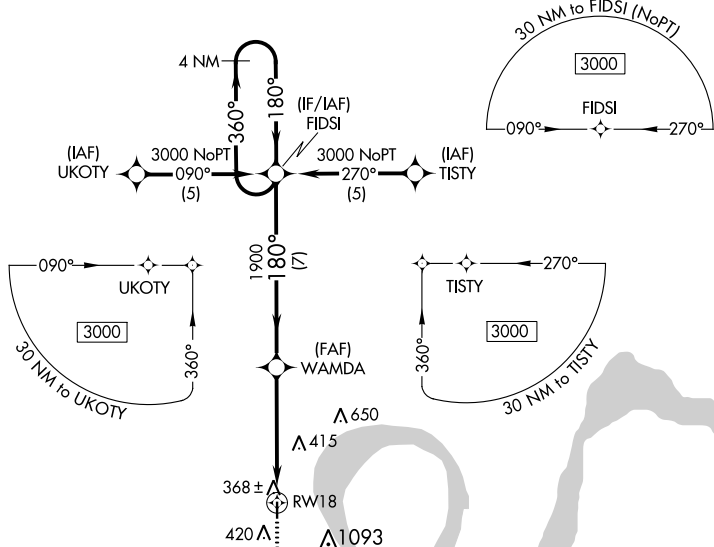
# RNAV (GPS) RWY 18

COUNTY MEML (EIW)

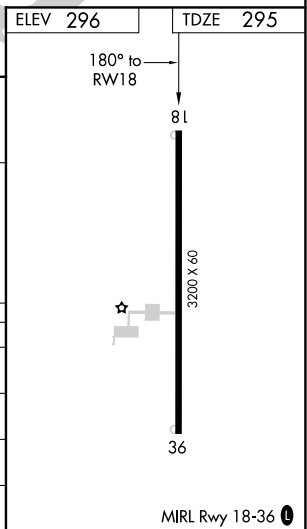
**▼** Circling to Rwy 36 NA at night. Baro-VNAV NA. DME/DME RNP-0.3 NA.  
**▲ NA** Visibility reduction by helicopters NA. Use Dyersburg altimeter setting; when not received, use Cairo altimeter setting and increase all DA 5 feet and all MDA 20 feet.

MISSED APPROACH: Climb to 3000 direct SEMIE and hold.

DYR AWOS-3PT <b>135.625</b>	MEMPHIS CENTER <b>133.65 292.15</b>	UNICOM <b>122.8 (CTAF) ①</b>
--------------------------------	--	---------------------------------



CATEGORY	A	B	C	D
LPV DA	628-1¼	333 (400-1¼)		NA
LNAV/VNAV DA	1016-2½	721 (800-2½)		NA
LNAV MDA	800-1	505 (600-1)		NA
CIRCLING	860-1 564 (600-1)	900-1 604 (700-1)		NA



NC-3, 09 SEP 2021 to 07 OCT 2021

NC-3, 09 SEP 2021 to 07 OCT 2021