

APP CRS	Rwy Idg	<b>4002</b>
<b>240°</b>	TDZE	<b>632</b>
	Apt Elev	<b>632</b>

# RNAV (GPS) RWY 24

HEBER SPRINGS MUNI (HBZ)

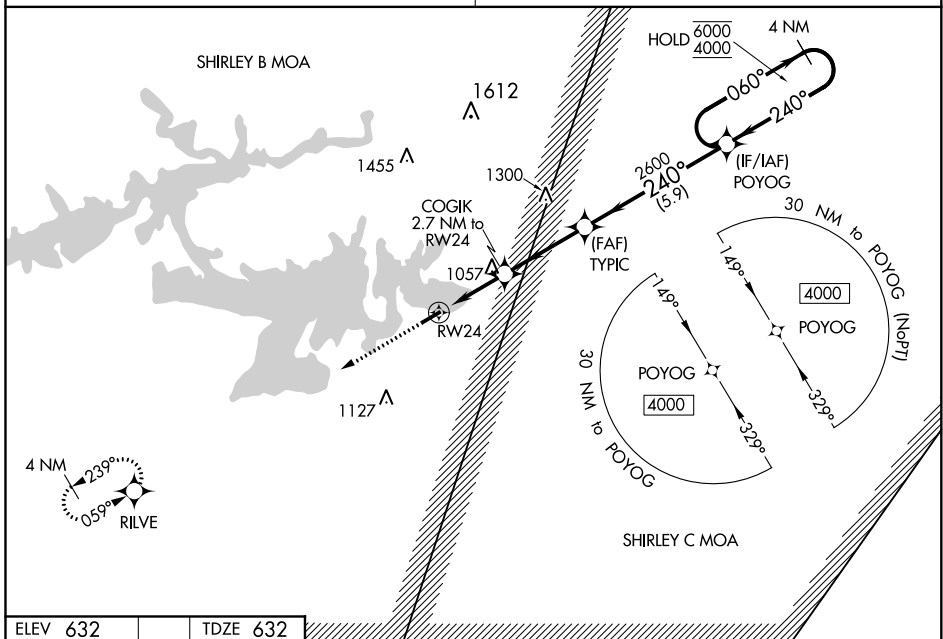
RNP APCH

Procedure NA at night. Rwy 24 helicopter visibility reduction below 1 SM NA. Obtain local altimeter setting on CTAF; when not received, use Batesville altimeter setting and increase all MDAs 80 feet, and increase LNAV visibility Cat B ¼ SM, Cat C and D ½ SM. Increase Circling visibility Cat B, C ¼ SM, and Cat D ½ SM.

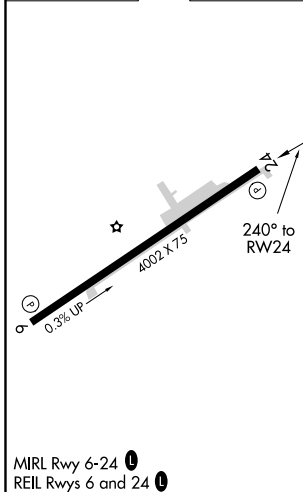
MISSED APPROACH: Climb to 4000 direct RILVE and hold, continue climb-in-hold to 4000.

MEMPHIS CENTER  
**126.85 281.55**

UNICOM  
**122.7 (CTAF)**



ELEV 632	TDZE 632
----------	----------



	4000	RILVE					
			COGIK 2.7 NM to RW24	TYPIC	POYOG	4 NM Holding Pattern	
				1540	2600	6000 4000	
			2.7 NM	3.4 NM	5.9 NM		
CATEGORY	A	B	C	D			
LNAV MDA	1320-1	688 (700-1)	1320-2	688 (700-2)			
<b>C</b> CIRCLING	1320-1 688 (700-1)	1380-1 748 (800-1)	1380-2¼ 748 (800-2¼)	1440-2½ 808 (900-2½)			

SC-1, 09 SEP 2021 to 07 OCT 2021

SC-1, 09 SEP 2021 to 07 OCT 2021