

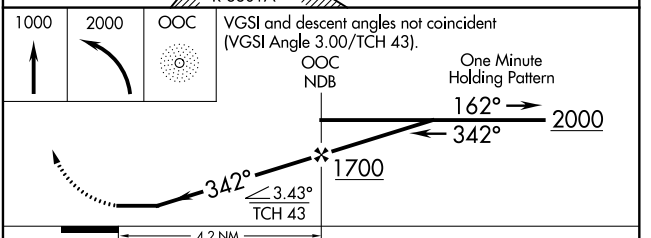
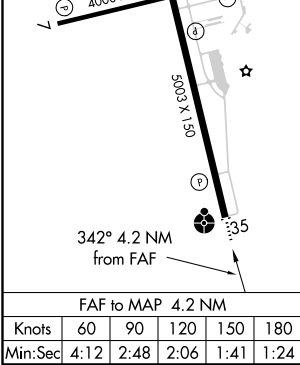
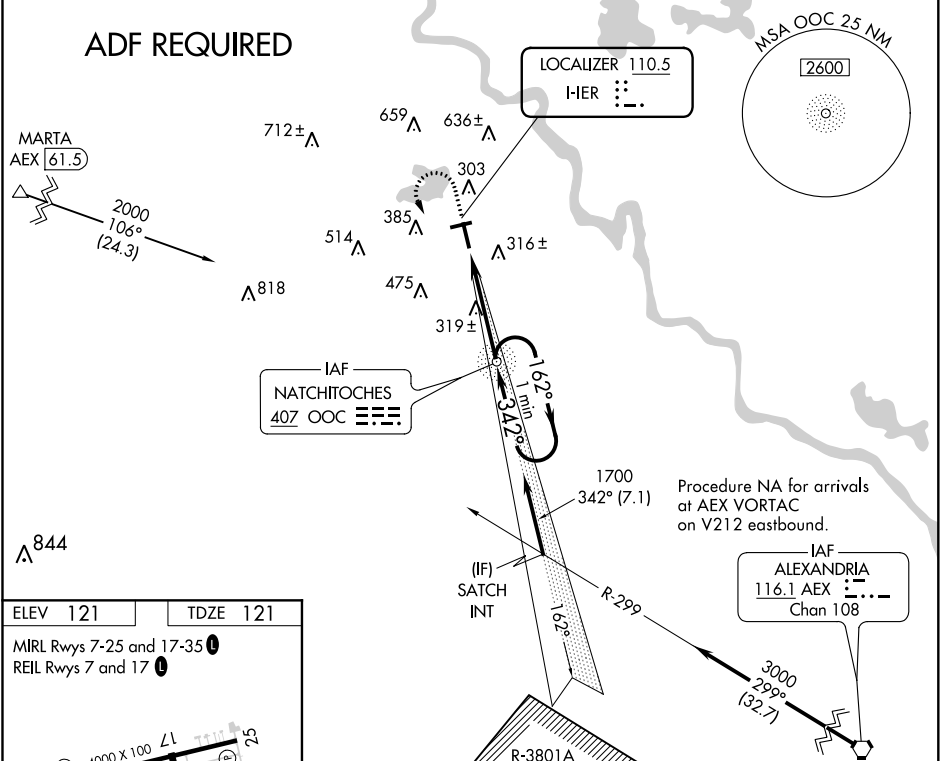
LOC I-HER <b>110.5</b>	APP CRS <b>342°</b>	Rwy Idg TDZE Apt Elev	<b>5003</b> <b>121</b> <b>121</b>
---------------------------	------------------------	-----------------------------	---

**LOC RWY 35**  
NATCHITOCHE RGNL (I.E.R.)

**NA** Helicopter visibility reduction below ¼ SM NA. When local altimeter setting not received, use Alexandria Intl altimeter setting: increase all MDA 100 feet and S-35 Cat C visibility ¼ SM and Circling Cat C visibility ½ SM. For inop ODALS when using Alexandria Intl altimeter setting, increase S-35 Cat C visibility ½ mile. Inop table does not apply to S-35 Cat A/B. ADF required.

**ODALS** MISSED APPROACH: Climb to 1000 then climbing left turn to 2000 direct OOC NDB and hold.

AWOS-3 <b>119.025</b>	POLK APP CON <b>125.4 302.2</b>	GCO <b>135.075</b>	UNICOM <b>122.8(CTAF)</b>
--------------------------	------------------------------------	-----------------------	------------------------------



CATEGORY	A	B	C	D
S-35	580-1	459 (500-1)	580-1½ 459 (500-1½)	NA
CIRCLING	680-1 559 (600-1)	740-1 619 (700-1)	860-2 739 (800-2)	NA

SC-4, 09 SEP 2021 to 07 OCT 2021

SC-4, 09 SEP 2021 to 07 OCT 2021