

WAAS CH <b>58322</b> <b>W18A</b>	APP CRS <b>178°</b>	Rwy ldg TDZE <b>140</b> Apt Elev <b>140</b>	<b>5005</b>
--	------------------------	---	-------------

# RNAV (GPS) RWY 18

CLEVELAND MUNI (RNV)

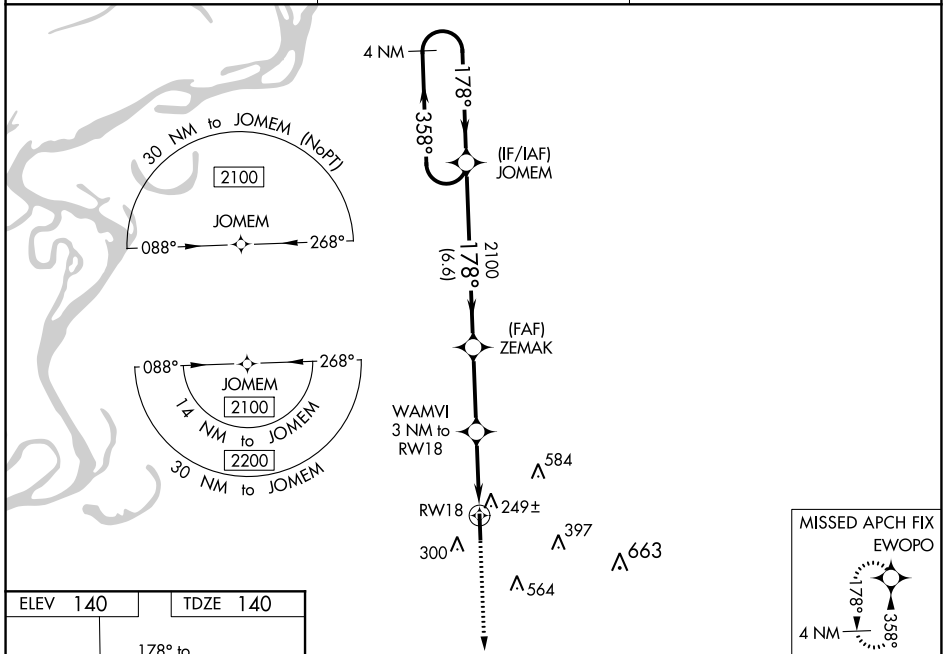
**⚠** For uncompensated Baro-VNAV systems, LNAV/VNAV NA below -1.5°C (5°F) or above 54°C (130°F). DME/DME RNP-0.3 NA. When local altimeter setting not received, use Greenville altimeter setting and increase LPV DA to 438, LNAV/VNAV DA to 597, and all MDA 60 feet; increase LPV all Cats and LNAV Cats C/D visibility 1/8 mile, increase LNAV/VNAV all Cats visibility 1/4 mile. Baro-VNAV and VDP NA when using Greenville altimeter setting. Rwy 18 helicopter visibility reduction below 3/4 SM NA.

**MISSED APPROACH:**  
Climb to 2100 direct EWOP and hold.

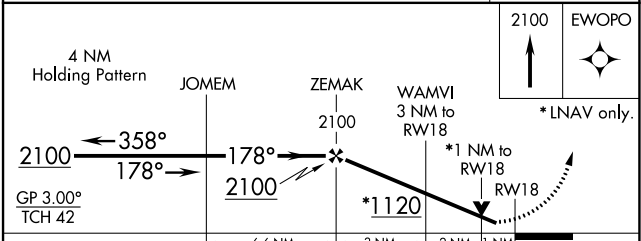
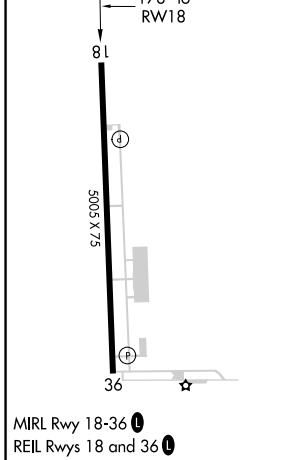
AWOS-3PT  
**124.175**

MEMPHIS CENTER  
**135.875 269.35**

UNICOM  
**122.725 (CTAF) ①**



ELEV 140	TDZE 140
----------	----------



CATEGORY	A	B	C	D
LPV DA		390-7/8	250 (300-7/8)	
LNAV/VNAV DA		549-13/8	409 (500-13/8)	
LNAV MDA		500-1	360 (400-1)	
<b>C</b> CIRCLING	600-1	460 (500-1)	900-2 1/4 760 (800-2 1/4)	900-2 1/2 760 (800-2 1/2)

SC-4, 09 SEP 2021 to 07 OCT 2021

SC-4, 09 SEP 2021 to 07 OCT 2021