

WAAS CH <b>65809</b> <b>W01A</b>	APP CRS <b>009°</b>	Rwy Idg TDZE Apt Elev	<b>4527</b> <b>588</b> <b>588</b>
--	------------------------	-----------------------------	---

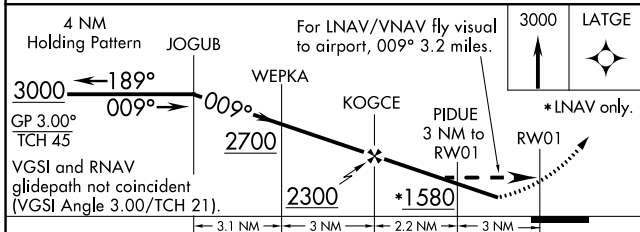
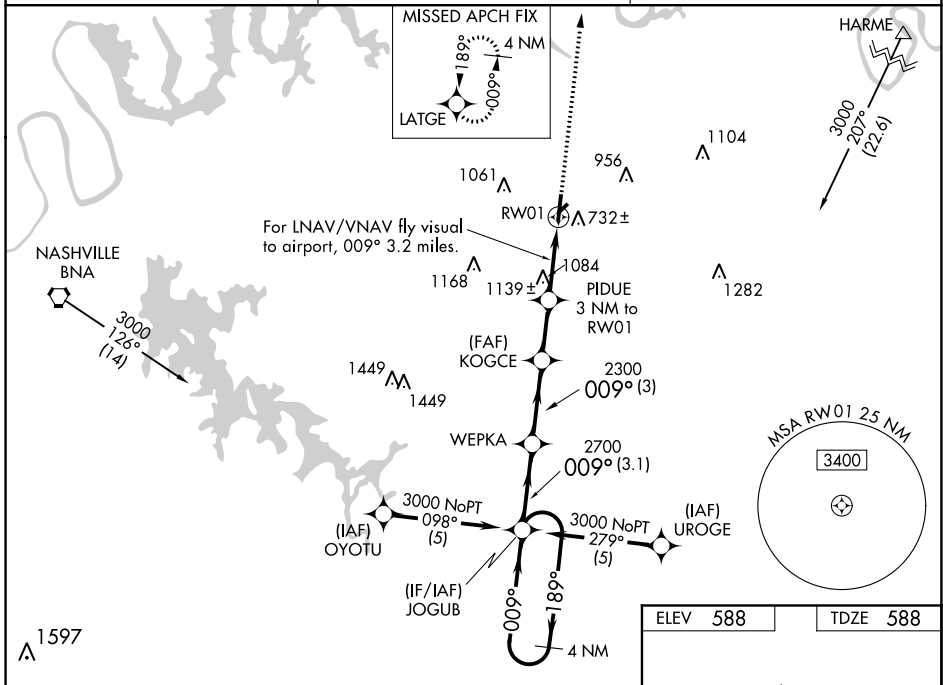
# RNAV (GPS) RWY 1

LEBANON MUNI (M54)

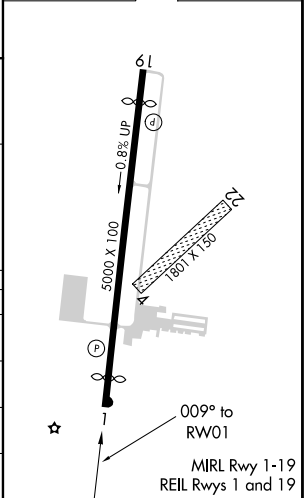
**NA** For uncompensated Baro-VNAV systems, LNAV/VNAV NA below -16° C (4° F) or above 47° C (116° F). DME/DME RNP-0.3 NA. Visibility reduction by helicopters NA. When local altimeter setting not received, use Nashville Intl altimeter setting: increase LPV DA to 1131 and all Cats visibility ¼ SM; increase all MDA 60 feet and Circling Cat C visibility ¼ SM. LNAV/VNAV NA when using Nashville Intl altimeter setting.

**MISSED APPROACH:** Climb to 3000 direct LATGE and hold.

AWOS-3 <b>118.325</b>	NASHVILLE APP CON <b>118.4 360.7</b>	UNICOM <b>122.725 (CTAF)</b>
--------------------------	---	---------------------------------



ELEV 588	TDZE 588
----------	----------



CATEGORY	A	B	C	D
LPV DA	1088-1¾ 500 (500-1¾)			
LNAV/VNAV DA	1663-2	1075 (1100-2)	1663-3	1075 (1100-3)
LNAV MDA	1400-1 812 (900-1)	1400-1¼ 812 (900-1¼)	1400-2½ 812 (900-2½)	1400-2¾ 812 (900-2¾)
CIRCLING	1400-1¼	812 (900-1¼)	1440-2½ 852 (900-2½)	1520-3 932 (1000-3)

SE-1, 09 SEP 2021 to 07 OCT 2021

SE-1, 09 SEP 2021 to 07 OCT 2021