

|  |                        |                             |   |
|--|------------------------|-----------------------------|---|
| WAAS<br>CH <b>90309</b><br><b>W19A</b> | APP CRS<br><b>189°</b> | Rwy Idg<br>TDZE<br>Apt Elev | <b>4500</b><br><b>568</b><br><b>588</b> |
|--|------------------------|-----------------------------|---|

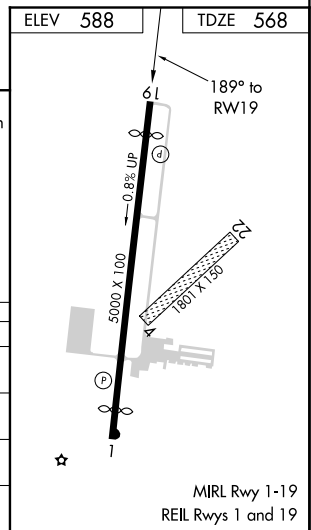
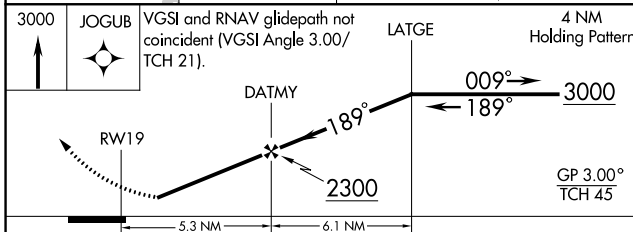
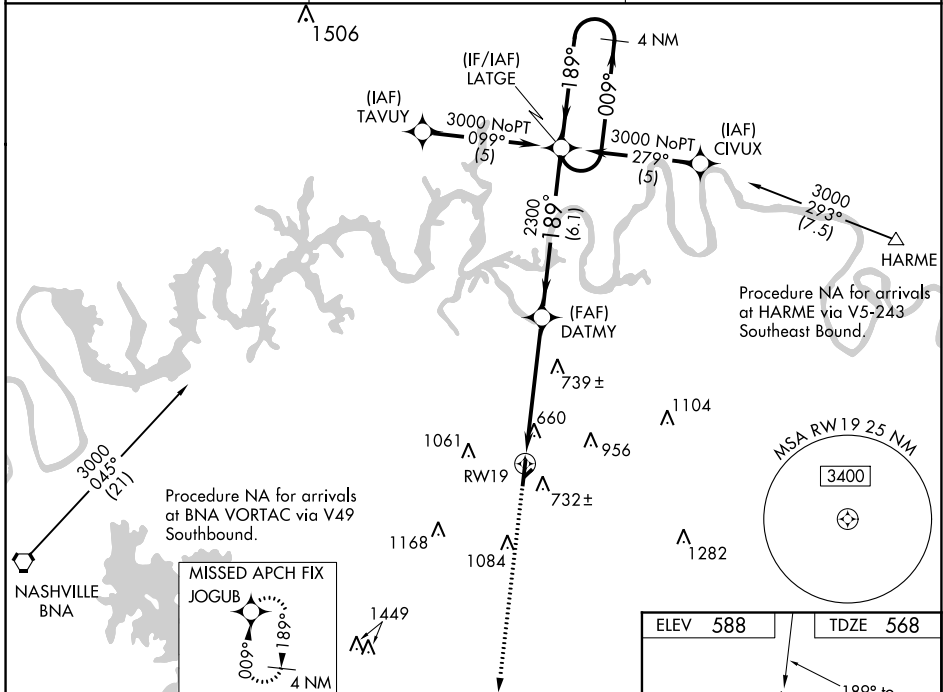
# RNAV (GPS) RWY 19

LEBANON MUNI (M54)

Baro-VNAV NA when using Nashville Intl altimeter setting. For uncompensated Baro-VNAV systems, LNAV/VNAV NA below -16° C (4° F) or above 47° C (116° F). DME/DME RNP-0.3 NA. Visibility reduction by helicopters NA. When local altimeter setting not received, use Nashville Intl altimeter setting: increase LPV DA to 942; increase all MDA 60 feet and Circling Cat C visibility ¼ SM.

MISSED APPROACH: Climb to 3000 direct JOGUB and hold.

|                          |   |                                 |
|--------------------------|---|---------------------------------|
| AWOS-3<br><b>118.325</b> | NASHVILLE APP CON<br><b>118.4 360.7</b> | UNICOM<br><b>122.725 (CTAF)</b> |
|--------------------------|---|---------------------------------|



| CATEGORY     | A           | B           | C            | D            |
|--------------|-------------|-------------|--------------|--------------|
| LPV DA       | 899-1¼      |             | 331 (400-1¼) |              |
| LNAV/VNAV DA | 996-1½      |             | 428 (500-1½) |              |
| LNAV MDA     | 1000-1      | 432 (500-1) | 1000-1¼      | 1000-1½      |
|              | 512 (600-1) | 612 (700-1) | 432 (500-1¼) | 432 (500-1½) |
| CIRCLING     | 1100-1      | 1200-1      | 1440-2½      | 1520-3       |
|              | 512 (600-1) | 612 (700-1) | 852 (900-2½) | 932 (1000-3) |

SE-1, 09 SEP 2021 to 07 OCT 2021

SE-1, 09 SEP 2021 to 07 OCT 2021