

APP CRS	Rwy Idg	<b>3400</b>
<b>009°</b>	TDZE	<b>580</b>
	Apt Elev	<b>585</b>

# RNAV (GPS) RWY 1

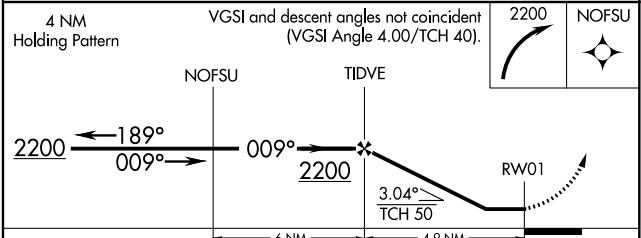
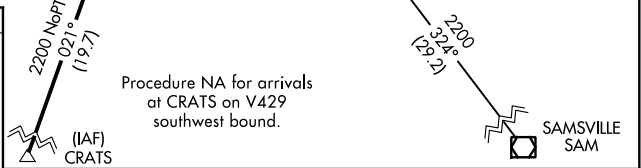
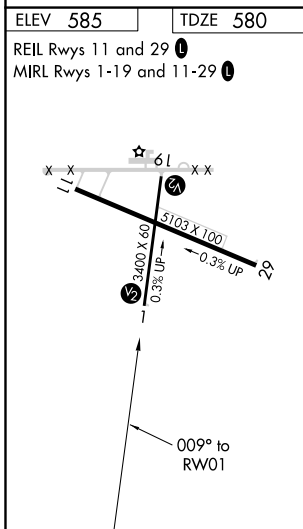
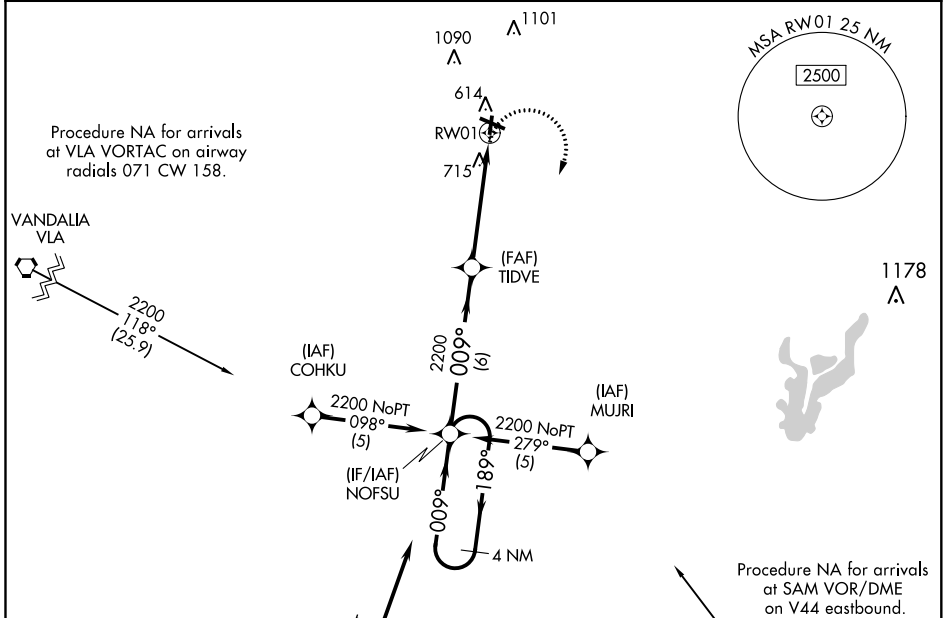
EFFINGHAM COUNTY MEML (1H2)

RNP APCH.

▼ Rwy 1 helicopter visibility reduction below 1 SM NA. Straight-in Rwy 1 NA at night,  
 ▲ Circling Rwy 1, 19 NA at night. When local altimeter setting not received, use Olney-Noble  
 altimeter setting and increase all MDA 80 feet and increase Circling Cat C visibility ¼ SM.

MISSED APPROACH: Climbing right turn to 2200 direct NOFSU and hold.

AWOS-3 <b>118.375</b>	KANSAS CITY CENTER <b>124.3 269.15</b>	UNICOM <b>122.725 (CTAF) 0</b>
--------------------------	---	-----------------------------------



CATEGORY	A	B	C	D
LNAV MDA	1020-1	440 (500-1)	1020-1 3/8 440 (500-1 3/8)	NA
<b>C</b> CIRCLING	1020-1 435 (500-1)	1140-1 555 (600-1)	1440-2 1/2 855 (900-2 1/2)	NA

EC-3, 09 SEP 2021 to 07 OCT 2021

EC-3, 09 SEP 2021 to 07 OCT 2021