

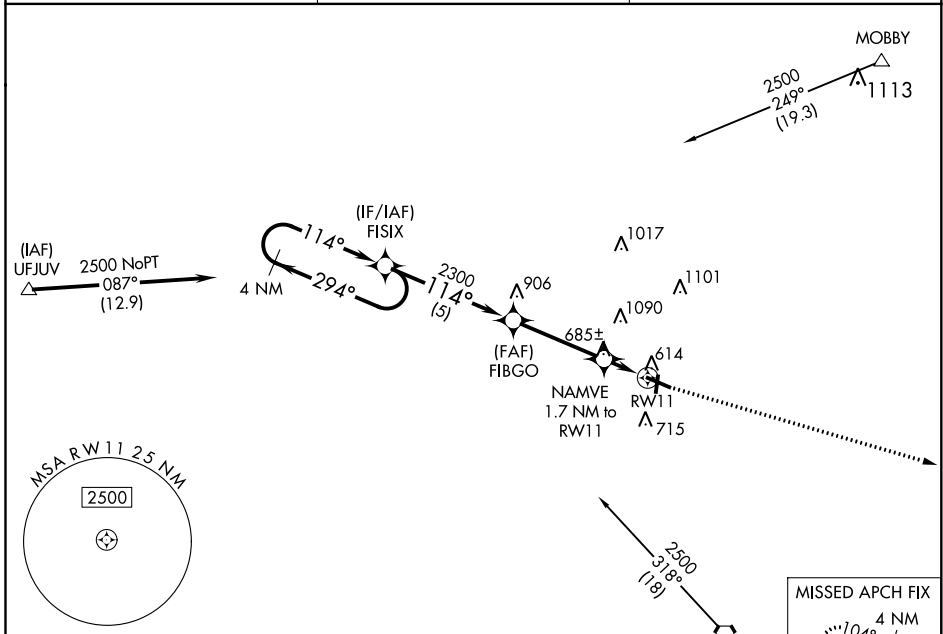
WAAS CH 99439 W11A	APP CRS 114°	Rwy Idg 5103 TDZE 585 Apt Elev 585
--	------------------------	---

RNAV (GPS) RWY 11

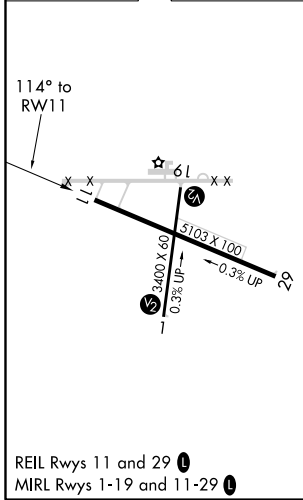
EFFINGHAM COUNTY MEML (1H2)

RNP APCH.	MISSED APPROACH: Climb to 2300 direct JOVAR and hold.
<p>▼ For uncompensated Baro-VNAV systems, LNAV/VNAV NA below -16°C or above 54°C. Straight-in Rwy 1 NA at night, Circling Rwy 1, 19 NA at night.</p>	

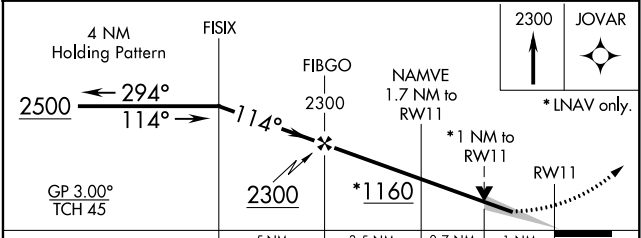
AWOS-3 118.375	KANSAS CITY CENTER 124.3 269.15	UNICOM 122.725 (CTAF) 0
--------------------------	---	--



ELEV 585	TDZE 585
----------	----------



Procedure NA for arrivals at BIB VORTAC on V12 eastbound.



CATEGORY	A	B	C	D
LPV DA		835-1	250 (300-1)	
LNAV/VNAV DA		856-1	271 (300-1)	
LNAV MDA		940-1	355 (400-1)	
C CIRCLING	1020-1 435 (500-1)	1140-1 555 (600-1)	1440-2½ 855 (900-2½)	1440-2¾ 855 (900-2¾)

EC-3, 09 SEP 2021 to 07 OCT 2021

EC-3, 09 SEP 2021 to 07 OCT 2021