

VOR CGG <b>109.8</b>	APP CRS <b>127°</b>	Rwy Idg <b>5005</b>
		TDZE <b>1154</b>
		Apt Elev <b>1158</b>

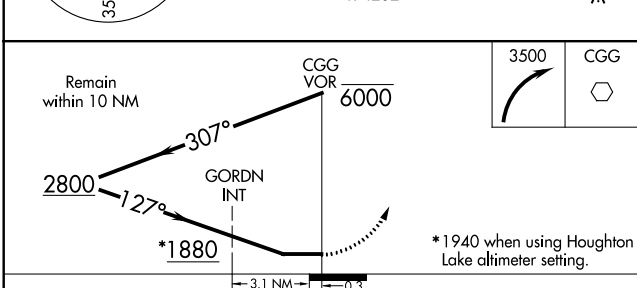
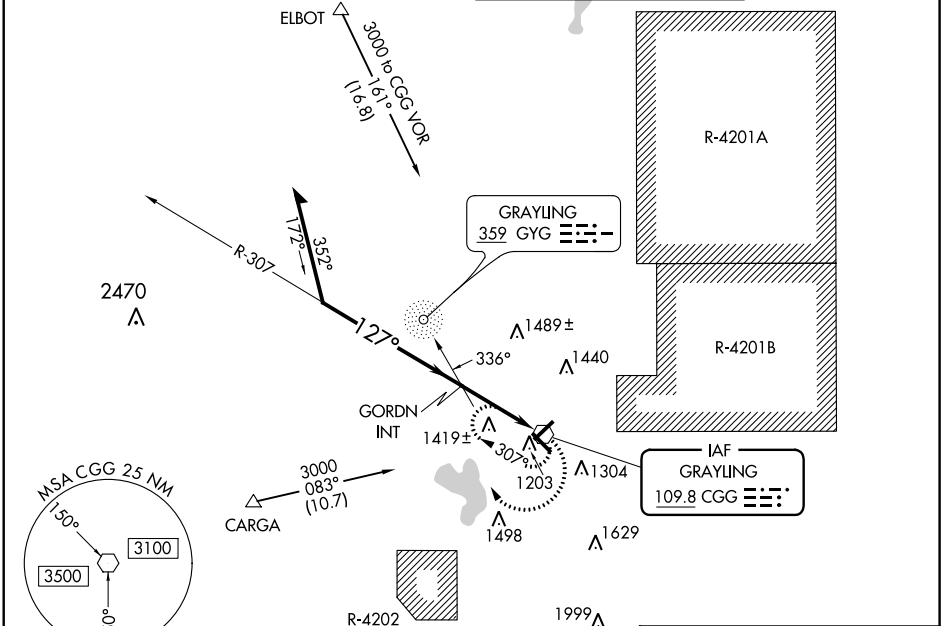
# VOR RWY 14

GRAYLING AAF (GOV)

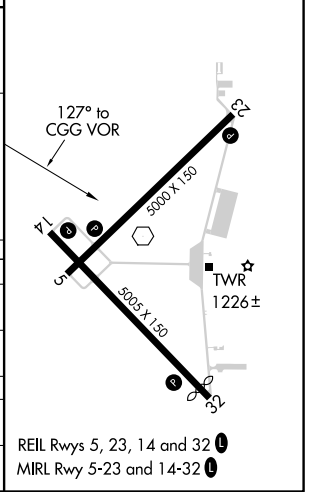
**▼** Rwy 14 helicopter visibility reduction below ¾ SM NA. Circling Rwy 5, 23, 32 NA at night.  
**▲** NA When local altimeter setting not received, use Houghton Lake altimeter setting and increase all MDAs 60 feet and visibility S-14 and Circling Cat B/C/D ½ SM and GORDN fix minimums: S-14 Cat C and Circling Cat D ¼ SM.

**MISSED APPROACH:**  
 Climbing right turn to 3500 in CGG VOR holding pattern.

ATIS <b>119.075</b>	MINNEAPOLIS CENTER <b>125.475 269.45</b>	GRAYLING TOWER ★ <b>126.2 (CTAF) 0</b>	GND CON <b>121.9</b>
------------------------	---	---	-------------------------



ELEV 1158	TDZE 1154
-----------	-----------



CATEGORY	A	B	C	D
S-14	1880-1 726 (800-1)		1880-2 726 (800-2)	1880-2¼ 726 (800-2¼)
CIRCLING	1880-1 722 (800-1)		1880-2 722 (800-2)	1960-2½ 802 (900-2½)
<b>GORDN FIX MINIMUMS</b>				
S-14	1720-1 566 (600-1)		1720-1⅝ 566 (600-1⅝)	1720-1¾ 566 (600-1¾)
CIRCLING	1720-1 562 (600-1)		1760-1¾ 602 (700-1¾)	1960-2½ 802 (900-2½)

EC-1, 09 SEP 2021 to 07 OCT 2021

EC-1, 09 SEP 2021 to 07 OCT 2021