

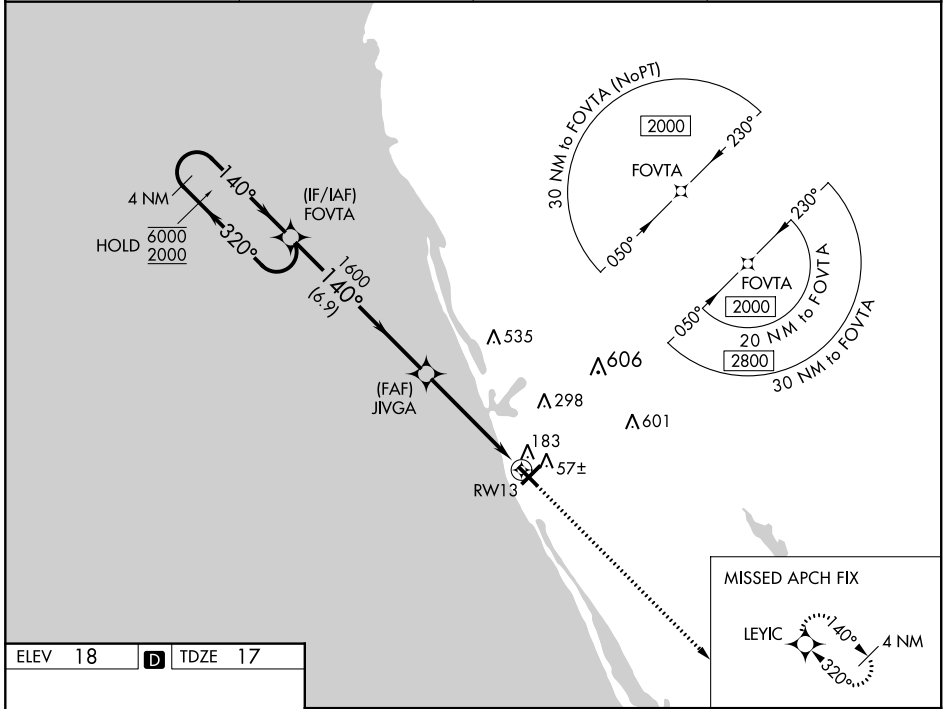
WAAS CH <b>86423</b> <b>W13A</b>	APP CRS <b>140°</b>	Rwy Idg TDZE Apt Elev	<b>4999</b> <b>17</b> <b>18</b>
--	------------------------	-----------------------------	---------------------------------------

# RNAV (GPS) RWY 13

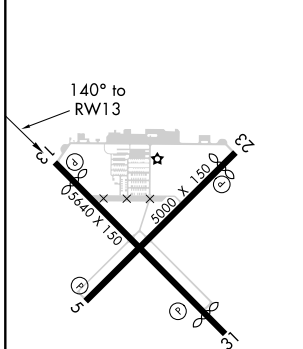
VENICE MUNI (VNC)

RNP APCH - GPS.		MISSED APPROACH: Climb to 2000 direct LEYIC and hold.	
<p><b>⚠</b> Rwy 13 helicopter visibility reduction below <math>\frac{3}{4}</math> SM NA.                  For uncompensated Baro-VNAV systems, LNAV/VNAV NA below -15°C or above 54°C.</p>			

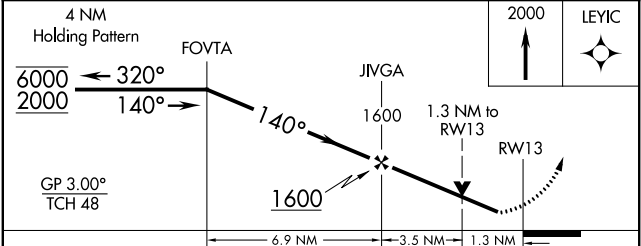
AWOS-3 <b>119.275</b>	TAMPA APP CON <b>119.65 353.575</b>	CLNC DEL <b>118.075</b>	UNICOM <b>122.725</b> (CTAF) <b>0</b>
--------------------------	--	----------------------------	--



ELEV 18	<b>D</b>	TDZE 17
---------	----------	---------



MIRL Rwy 5-23 and 13-31 **0**  
 REIL Rwy 5, 13 and 23 **0**  
 REIL Rwy 31



CATEGORY	A	B	C	D
LPV DA		267- $\frac{3}{4}$	250 (300- $\frac{3}{4}$ )	
LNAV/VNAV DA		364-1	347 (400-1)	
LNAV MDA	460-1	443 (500-1)	460-1 $\frac{3}{8}$	443 (500-1 $\frac{3}{8}$ )
<b>C</b> CIRCLING	500-1	482 (500-1)	680-1 $\frac{3}{4}$ 662 (700-1 $\frac{3}{4}$ )	920-3 902 (1000-3)

SE-3, 09 SEP 2021 to 07 OCT 2021

SE-3, 09 SEP 2021 to 07 OCT 2021