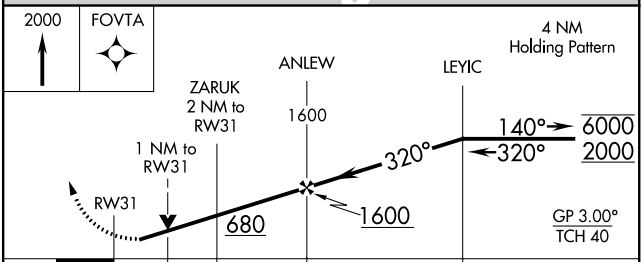
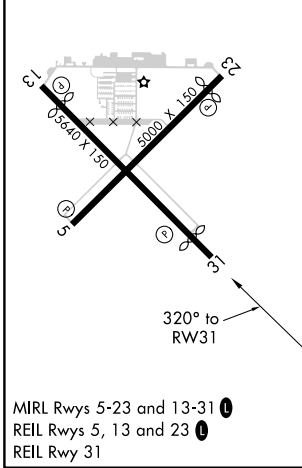
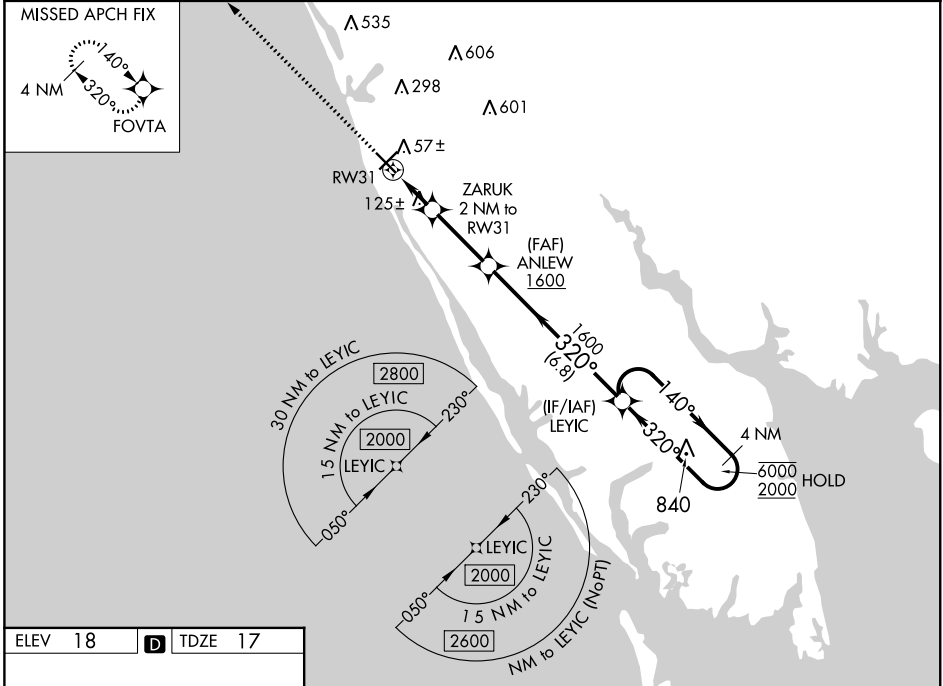


WAAS CH 78223 W31A	APP CRS 320°	Rwy Idg 4999 TDZE 17 Apt Elev 18
--	------------------------	---

RNAV (GPS) RWY 31

VENICE MUNI (VNC)

RNP APCH - GPS.		MISSED APPROACH: Climb to 2000 direct FOVTA and hold.	
Rwy 31 helicopter visibility reduction below 3/4 SM NA. For uncompensated Baro-VNAV systems, LNAV/VNAV NA below -15°C or above 54°C.			
AWOS-3 119.275	TAMPA APP CON 119.65 353.575	CLNC DEL 118.075	UNICOM 122.725 (CTAF)



CATEGORY	A	B	C	D
LPV DA		267-3/4	250 (300-3/4)	
LNAV/VNAV DA		296-7/8	279 (300-7/8)	
LNAV MDA		380-1	363 (400-1)	
CIRCLING	500-1	482 (500-1)	680-1 3/4 662 (700-1 3/4)	920-3 902 (1000-3)

SE-3, 09 SEP 2021 to 07 OCT 2021

SE-3, 09 SEP 2021 to 07 OCT 2021