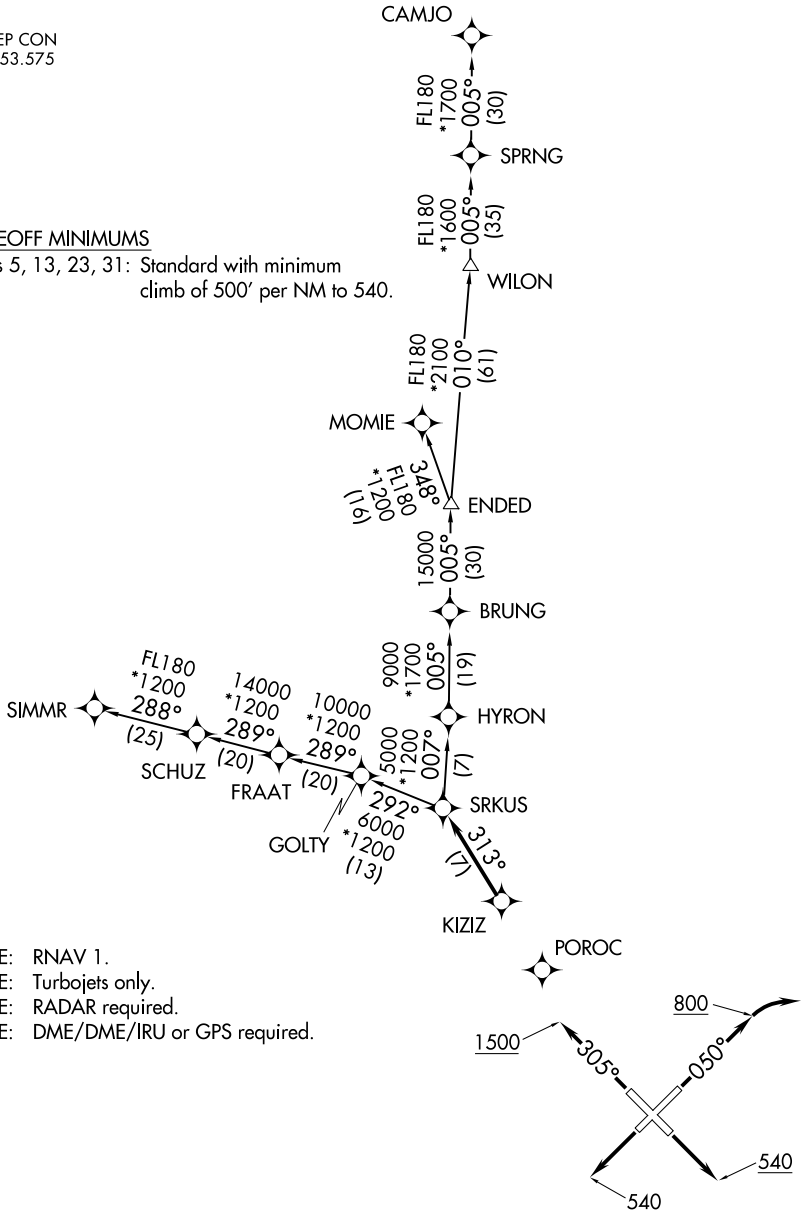


# SRKUS FOUR DEPARTURE (RNAV)

AWOS-3  
119.275  
CLNC DEL  
118.25  
TAMPA DEP CON  
119.65 353.575

### TAKEOFF MINIMUMS

Rwys 5, 13, 23, 31: Standard with minimum  
climb of 500' per NM to 540.



- NOTE: RNAV 1.
- NOTE: Turbojets only.
- NOTE: RADAR required.
- NOTE: DME/DME/IRU or GPS required.

NOTE: Chart not to scale.

(NARRATIVE ON FOLLOWING PAGE)

SE-3, 09 SEP 2021 to 07 OCT 2021

SE-3, 09 SEP 2021 to 07 OCT 2021

# SRKUS FOUR DEPARTURE (RNAV)