

LOC I-RVL	APP CRS	Rwy Idg	<b>5001</b>
<b>109.3</b>	<b>059°</b>	TDZE	<b>819</b>
		Apt Elev	<b>819</b>

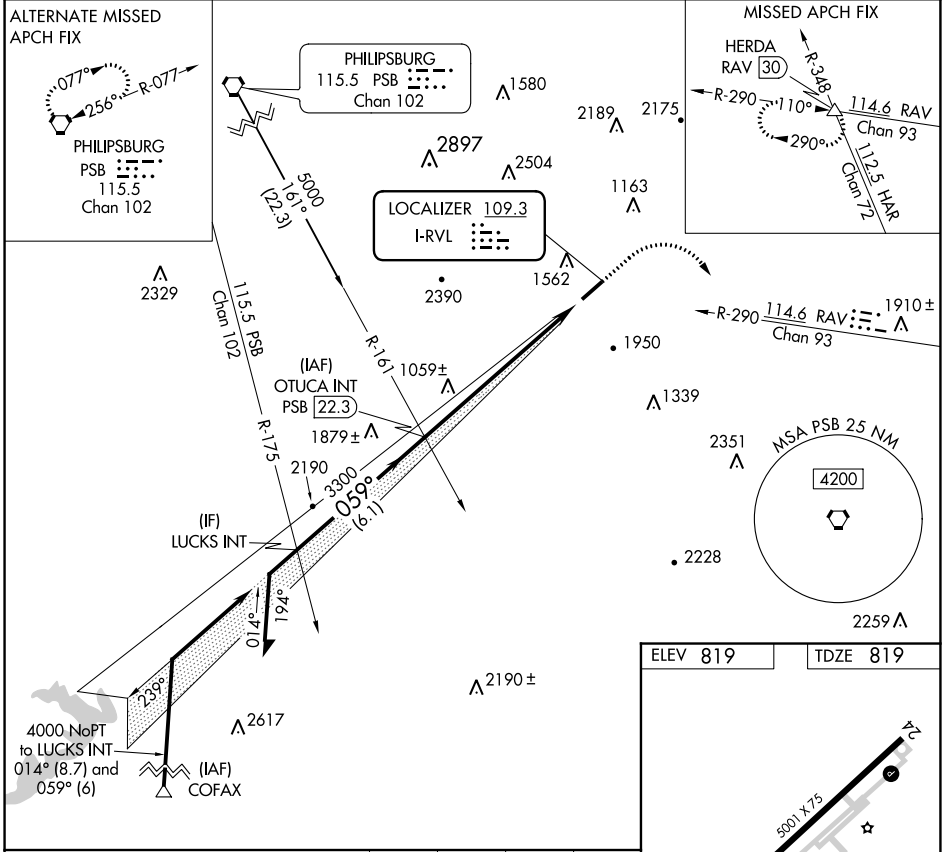
# LOC RWY 6

MIFFLIN COUNTY (RVL)

**NA** Rwy 6 helicopter visibility reduction below 3/4 SM NA. VDP NA with State College altimeter setting. When local altimeter setting not received, use State College altimeter setting and increase all MDAs 100 feet.

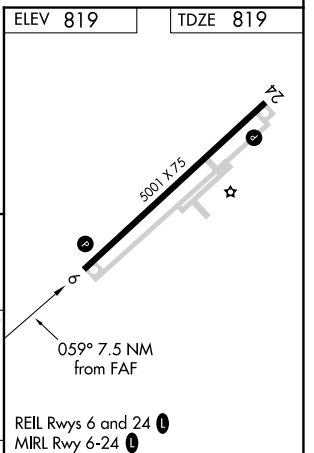
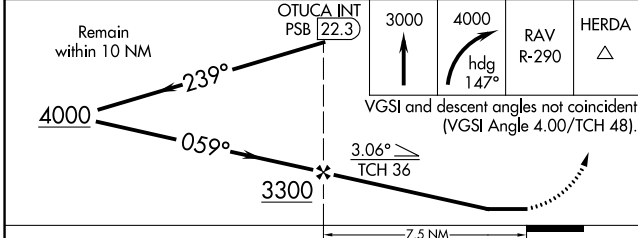
**MISSED APPROACH:** Climb to 3000 then climbing right turn to 4000 on heading 147° and RAV VORTAC R-290 to HERDA INT/RAV 30 DME and hold.

AWOS-3PT <b>123.85</b>	NEW YORK CENTER <b>134.8 338.3</b>	UNICOM <b>122.7 (CTAF)</b>
---------------------------	---------------------------------------	-------------------------------



NE-4, 09 SEP 2021 to 07 OCT 2021

NE-4, 09 SEP 2021 to 07 OCT 2021



CATEGORY	A	B	C	D	FAF to MAP 7.5 NM					
S-6	1840-1 1/4 1021 (1100-1 1/4)	1840-1 1/2 1021 (1100-1 1/2)	1840-3	1021 (1100-3)	Knots	60	90	120	150	180
					Min:Sec	7:30	5:00	3:45	3:00	2:30