

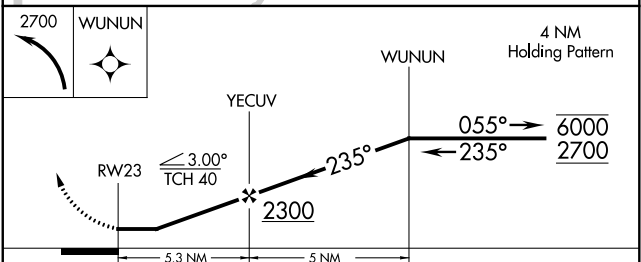
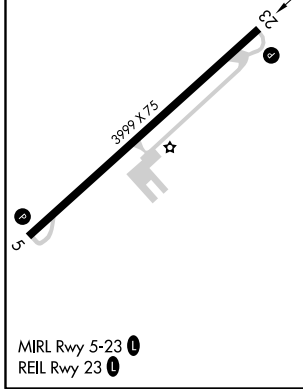
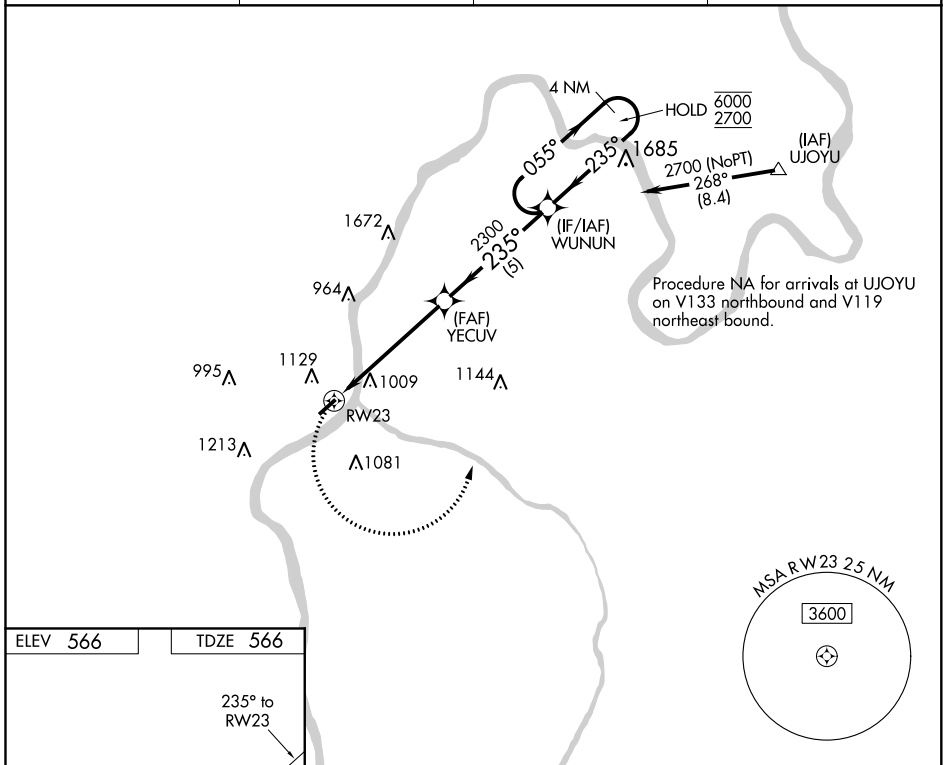
APP CRS 235°	Rwy ldg TDZE Apt Elev	3999 566 566
------------------------	-----------------------------	---

RNAV (GPS) RWY 23

GALLIA-MEIGS RGNL (GAS)

RNP APCH-GPS.	MISSED APPROACH: Climbing left turn to 2700 direct WUNUN and hold.
Helicopter visibility reduction below 1 SM NA. Procedure NA at night.	

AWOS-3 119.925	HUNTINGTON APP CON 128.4 270.1	CLNC DEL 124.55	UNICOM 123.0 (CTAF)
--------------------------	--	---------------------------	-------------------------------



CATEGORY	A	B	C	D
LNNAV MDA	1320-1 754 (800-1)	1320-1¼ 754 (800-1¼)	1320-2 754 (800-2)	NA
CIRCLING	1440-1¼ 874 (900-1¼)	874 (900-1¼)	1440-2½ 874 (900-2½)	NA

EC-2, 09 SEP 2021 to 07 OCT 2021

EC-2, 09 SEP 2021 to 07 OCT 2021