

WAAS CH 97605 W07A	APP CRS 073°	Rwy Idg TDZE Apt Elev	5000 891 891
--	------------------------	-----------------------------	---

RNAV (GPS) RWY 7

OCONEE COUNTY RGNL (CEU)

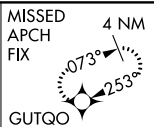
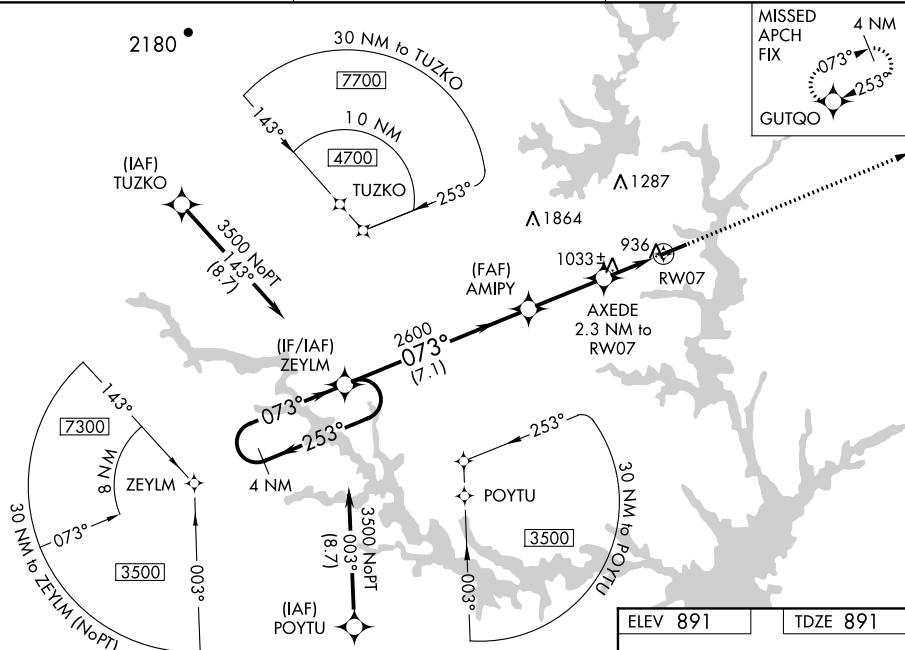
⚠ Baro-VNAV NA when using Anderson altimeter setting. For uncompensated Baro-VNAV systems, LNAV/VNAV NA below -6°C (22°F) or above 54°C (130°F). DME/DME RNP-0.3 NA.
⚠ When local altimeter setting not received, use Anderson altimeter setting and increase all DA 47 feet and all MDA 60 feet; increase LPV and LNAV/VNAV Cats A and B, and LNAV Cat C visibility ¼ mile. Helicopter visibility reduction below ¼ SM NA.

MISSED APPROACH:
Climb to 3000 direct GUTQO and hold.

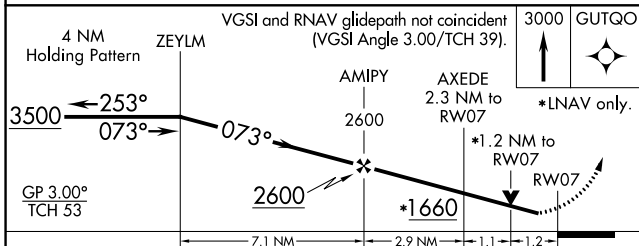
ASOS
119.275

GREER APP CON ★
118.8 270.275

UNICOM
122.7 [CTAF] 0



ELEV 891	TDZE 891
----------	----------



CATEGORY	A	B	C	D
LPV DA	1146-¾	255 (300-¾)	1146-1 255 (300-1)	NA
LNAV/VNAV DA	1144-¾	253 (300-¾)	1144-1 253 (300-1)	NA
LNAV MDA	1300-1	409 (500-1)	1300-1½ 409 (500-1½)	NA
C CIRCLING	1300-1 409 (500-1)	1360-1 469 (500-1)	1640-2¼ 749 (800-2¼)	NA

073° to RW07

MIRL Rwy 7-25 **0**
REIL Rwy 7 and 25 **0**

SE-2, 09 SEP 2021 to 07 OCT 2021

SE-2, 09 SEP 2021 to 07 OCT 2021