

RNAV (GPS) RWY 17

MENA INTERMOUNTAIN MUNI (MEZ)

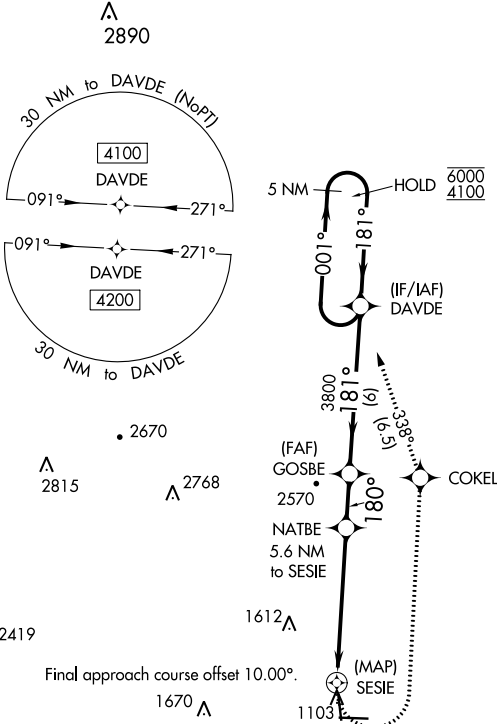
APP CRS 180°	Rwy Idg 5001
	TDZE 1063
	Apt Elev 1080

RNP APCH.
 ▼ Circling Rwy 35 NA at night.
 ▲ Rwy 17 helicopter visibility reduction below ¼ SM NA.
 MISSED APPROACH: Climbing left turn to 4100 direct COKEI and track 338° to DAVDE and hold.

AWOS-3
118.025

MEMPHIS CENTER
126.1 269.0

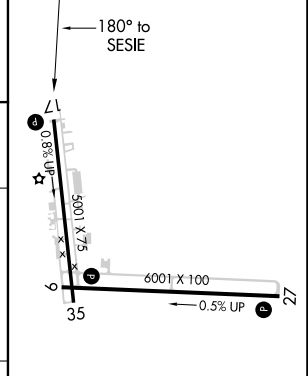
UNICOM
122.8 (CTAF) 0



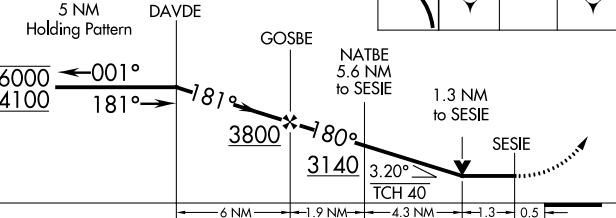
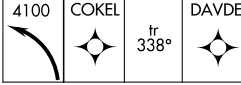
SC-1, 09 SEP 2021 to 07 OCT 2021

SC-1, 09 SEP 2021 to 07 OCT 2021

ELEV 1080	TDZE 1063
-----------	-----------



VGSI and descent angles not coincident (VGSI Angle 3.00/TCH 50).



CATEGORY	A	B	C	D
LNVA MDA	1660-1	597 (600-1)	1660-1¼ 597 (600-1¼)	NA
CIRCLING	1840-1 760 (800-1)	2140-1½ 1060 (1100-1½)	2220-3 1140 (1200-3)	NA

MIRL Rwy 9-27 and 17-35
REIL Rwy 9, 27 and 35